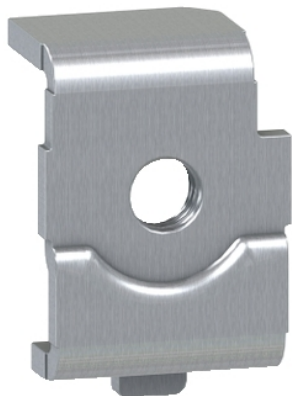




Product availability: Non-Stock - Not normally stocked in distribution facility



### Main

Accessory / separate part category	Mounting accessories
Quantity per set	Set of 100

### Complementary

ISO thread	M6
Mounting support	Asymmetrical DZ5-MB rail
Net weight	0.02 lb(US) (0.009 kg)
Type of nut	1/4 turn, sliding

### Ordering and shipping details

Category	22621 - IEC PANEL ACCESSORIES
Discount Schedule	I
GTIN	00785901444671
Package weight(Lbs)	0.01 kg (0.02 lb(US))
Returnability	No
Country of origin	FR

### Offer Sustainability

Sustainable offer status	Green Premium product
California proposition 65	WARNING: This product can expose you to chemicals which are known to the State of California to cause Carcinogen & Reproductive harm. For more information go to <a href="http://www.p65warnings.ca.gov">www.p65warnings.ca.gov</a>
REACH Regulation	<a href="#">REACH Declaration</a>
REACH free of SVHC	Yes
EU RoHS Directive	Pro-active compliance (Product out of EU RoHS legal scope) <a href="#">EU RoHS Declaration</a>
Toxic heavy metal free	Yes
Mercury free	Yes
RoHS exemption information	<a href="#">Yes</a>
China RoHS Regulation	<a href="#">China RoHS Declaration</a>
Environmental Disclosure	<a href="#">Product Environmental Profile</a>
Circularity Profile	No need of specific recycling operations

### Contractual warranty

Warranty	18 months
----------	-----------