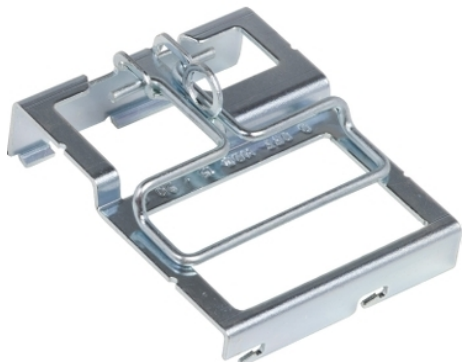


Product availability: Stock - Normally stocked in distribution facility



Main

Product or component type	Padlocking device
Range of product	Homeline

Complementary

Number of poles	2
Locking options description	Locks On or Off

Ordering and shipping details

Category	00150 - HOM LC ACCESSORIES
Discount Schedule	DE3C
GTIN	00785901725725
Package weight(Lbs)	0.04 kg (0.08 lb(US))
Returnability	Yes
Country of origin	MX

Offer Sustainability

REACH Regulation	REACH Declaration
EU RoHS Directive	Compliant EU RoHS Declaration
Mercury free	Yes
RoHS exemption information	Yes
China RoHS Regulation	China RoHS Declaration

The information provided in this documentation contains general descriptions and/or technical characteristics of the performance of the products contained herein. This documentation is not intended as a substitute for and is not to be used for determining suitability or reliability of these products for specific user applications. It is the duty of any such user or integrator to perform the appropriate and complete risk analysis, evaluation and testing of the products with respect to the relevant specific application or use thereof. Neither Schneider Electric Industries SAS nor any of its affiliates or subsidiaries shall be responsible or liable for misuse of the information contained herein.