
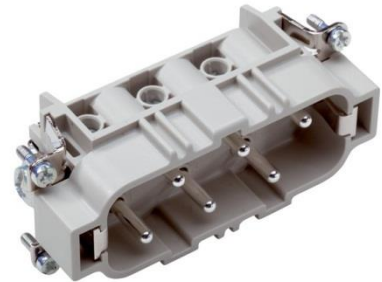


10170000	<b>DATA SHEET</b>	
Valid from: 17.09.2018	<b>EPIC® H-BS 6 SS / H-BS 6 BS</b>	

## Description

- Inserts for high currents.
- High rating for currents up to 35 A
- Screw termination up to a conductor cross section of 6 mm<sup>2</sup>



## General Characteristics

Series	H-BS 6
Version	Male/Female(Article 10171000)
Wire protection	Yes
Number of Contacts	6 + PE
Contacts	1-6
Termination Methods	Screw termination: 0.5 - 6 mm <sup>2</sup>
Temperature Range	-40°C to +100°C, short-term up to +125°C

## Mechanical Characteristics

Cycle of mechanical operation	100
-------------------------------	-----

## Electrical Characteristics

Rated Voltage, IEC	500 V
Rated Voltage, UL	600 V
Rated Voltage, CSA	600 V
	Conductor - conductor: 690 V
Rated Impulse Voltage	6 kV
Rated Current, IEC	35 A
Rated Current, UL	35 A
Rated Current, CSA	35 A
Contact Resistance	< 2 mOhm
Degree of Soiling	3

## Materials and Surfaces

Contacts	Copper alloy, hard silver-plated
Insulating Body	PC
Flammability Class according to UL 94	V0


## Approvals

UL-Approval, E-File-Number	E75770
VDE-tested, VDE-REG. no.	B437

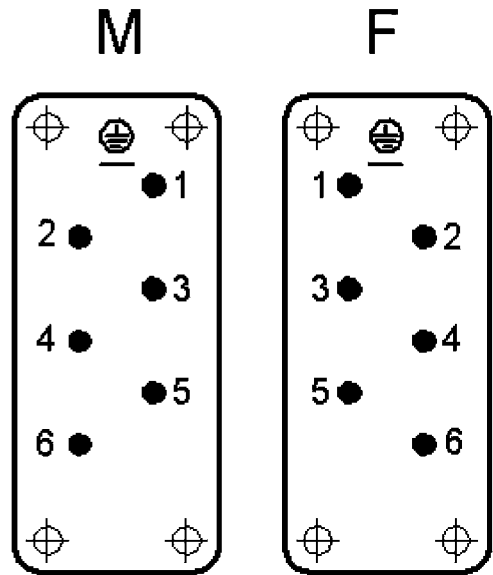
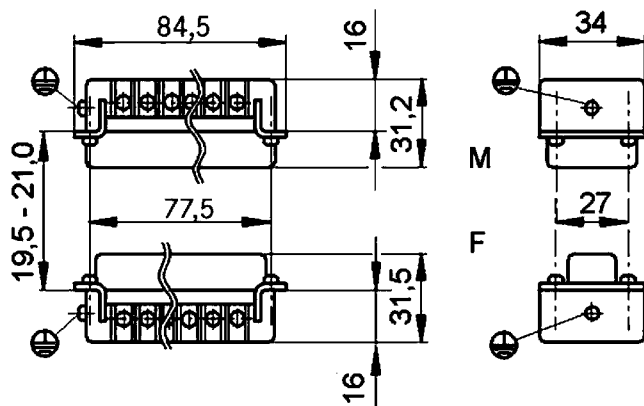
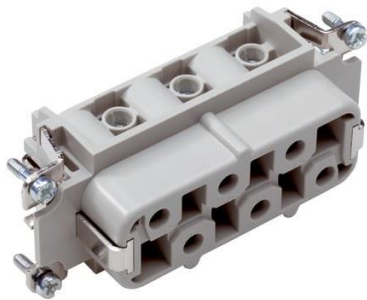
## Standard

Safety Standard	IEC 61984, UL 1977
-----------------	--------------------

Creator: MANA2/PDP Released: IVSE1/PDP	Document: DB10170000EN Version: 01	Page 1 of 2
-------------------------------------------	---------------------------------------	-------------

10170000	<b>DATA SHEET</b>	
Valid from: 17.09.2018	EPIC <sup>®</sup> H-BS 6 SS / H-BS 6 BS	

### Technical Drawings



Industrial machinery and plant engineering



Robust



Temperature-resistant

### Info

Standard insert for currents up to 35A

### Application range

Plant engineering  
Mechanical engineering  
Drive systems

### Remark

Photographs are not to scale and do not represent detailed images of the respective products.

Creator: MANA2/PDP Released: IVSE1/PDP	Document: DB10170000EN Version: 01	Page 2 of 2
-------------------------------------------	---------------------------------------	-------------