

Hubbellock® Devices  
30A, 600V AC, 20A, 250V DC, 3 Pole, 4 Wire  
Grounding

## Hubbellock® Connector

### Features

- Spring loaded safety shutter contains arcing when mating or un-mating devices under load
- Spring loaded safety shutter automatically ejects the plug eliminating contact teasing
- Box terminals in conjunction with screws with pressure pads provide maximum termination strength and dependability
- Three-piece clamp assembly provides maximum strain relief and protects against entry of moisture and dust

### Ordering Information

Description	Cord Diameter	UPC	Catalog Number
Black nylon housing, thermoplastic interior	.700"-1.200" (17.78-30.5)	783585017297	HBL21414B

### Listings

Listed to UL 498  
Certified to CSA C22.2 No.42

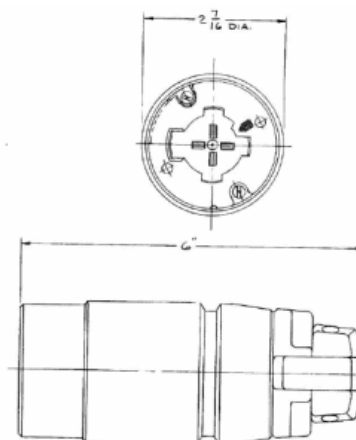
### Specifications

Device Color	Black/White
Housing	Nylon
Cord Clamp Material	PET
Contact Housing	PBT
Contacts	Bronze
Shutter	Thermoset
Terminal Screws	Zinc plated steel
Assembly Screws	Stainless Steel

### Performance

<b>Electrical</b>	
Current Interrupting	Certified for current interrupting at full rated current
Dielectric Voltage Withstand	2,000V minimum
<b>Mechanical</b>	
Terminal Accommodation	#10 AWG - #6 AWG stranded copper wire only.
Terminal Identification	Terminals identified in accordance with UL 498
<b>Environmental</b>	
Flammability	UL 94 VO for Receptacles and Inlets. HB or better for Plugs and Connectors
Moisture Resistance	IP30 Suitability
Operating Temperatures	Maximum Continuous 75°C; Minimum -40°C (w/o impact)

# HUBBELL



### Accessories

Plug	HBL21415B
"Mini" Boot	HBL20424B
Flanged Inlet	HBL20418

### Resources

Customer Use Drawing  
eCatalog

Dimensions in Inches (mm)

Hubbell Wiring Device-Kellems • Hubbell Incorporated (Delaware) • 40 Waterview Drive • Shelton, CT 06484

Phone (800) 288-6000 • Fax (800) 255-1031 • Specifications subject to change without notice.

