





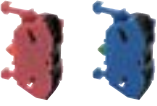
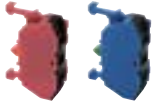






Item	Appearance	Description/Usage	Part Number	
Replacement Jumbo Dome Lens		Polycarbonate Replacement Lens (If using yellow lens, use white LED.)	HW1A-P5Ⓢ Ⓢ = (A, G, R, S, W, Y)	
Replacement Jumbo LED Diffusing Lens			HW9Z-PP5C	
Replacement LED Lamps for HW Jumbo Dome		Replacement LED Lamp - applicable for jumbo pilot lights only	LSTD8-2Ⓢ Ⓢ = (A, G, R, S, W)	
Rubber Cover for Dual Pushbuttons		Clear Silicon rubber cover	HW9Z-D7D	
Barrier for Dual Pushbuttons		Plastic barrier. Used when mounting the HW7 units on 30mm horizontal centers, to prevent possible interconnections between adjoining terminals.	HW-VU1	
EMO Sticker		Emergency stop nameplate sticker	HW9Z-EMO-NP-TK2120	
Contact Blocks (with side entry)		These contacts are applicable for wires terminated by ring, fork, terminals, not recommended for bare wire connections.	1NC	1NO
			HW-U01 HW-U01-MAU HW-U01R HW-U01R-MAU (with side entry)	HW-U10 HW-U10-MAU HW-U10R HW-U10R-MAU (with side entry)
Contact Blocks (without side entry)		These contacts are applicable for wires terminated by ring, fork, or ferule terminals, and also bare wire connections.	HW-U01-F HW-U01-MAU-F HW-U01R-F HW-U01R-MAU-F (no side entry)	HW-U10-F HW-U10-MAU-F HW-U10R-F HW-U10R-MAU-F (no side entry)

E-Stop Shrouds

Style	Part Numbers	E-Stop Types	Applicable Standards
	HW9Z-KG1	40mm Mushroom Head	SEMI S2-0703, 12.5.1 Compliant
	HW9Z-KG2	40mm Mushroom Head	SEMI S2-0703, 12.5.1 & SEMATECH Compliant

Style	Part Numbers	E-Stop Types	Applicable Standards
	HW9Z-KG3	40mm Mushroom Head	SEMI S2 Compliant (Approved by TUV) ISO 13850
	HW9Z-KG4	40mm Mushroom Head	SEMI S2 Compliant (Approved by TUV) & SEMATECH ISO 13850

Contact Assemblies

Standard Contact Assemblies

For use with Non-Illuminated Pushbuttons & E-Stops

Style	Contacts	Part Number
	1NO	HW-CBF10
	1NC	HW-CBF01
	1NO/1NC	HW-CBF11
	2NO	HW-CBF20
	2NC	HW-CBF02
	2NO/2NC	HW-CBF22



Gold contact option is available. Add suffix "MAU" to end of part number. For example, HW-CBF20 becomes HW-CBF20-MAU.

Full Voltage Contact Assemblies

For use with Illuminated Pushbuttons.

Style	Contacts	Part Number
	1NO	HW-FL10Q0
	2NO	HW-FL20Q0
	1NO/1NC	HW-FL11Q0
	1NC	HW-FL01Q0
	2NC	HW-FL02Q0



Order LED separately.

Transformer Contact Assemblies

For use with Illuminated Pushbuttons.

Style	Contacts	Part Number
	120V AC with LED	1NO 2NO 1NC 1NO/1NC
	240V AC with LED	1NO 2NO 1NC 1NO/1NC
	480V AC with LED	1NO 2NO 1NC 1NO/1NC
		HW-FL10H2-② HW-FL20H2-② HW-FL01H2-② HW-FL11H2-② HW-FL10M4-② HW-FL20M4-② HW-FL01M4-② HW-FL11M4-② HW-FL10T8-② HW-FL20T8-② HW-FL01T8-② HW-FL11T8-②

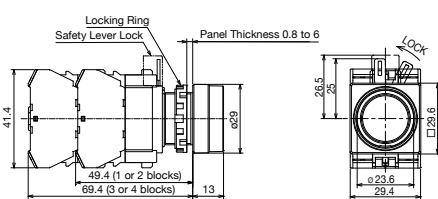


1. In place of ②, specify the LED Color Code.
② = A, G, R, S, or W
2. 6V LED included.

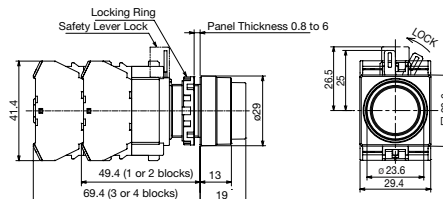
Dimensions (mm)

Non-Illuminated Pushbuttons

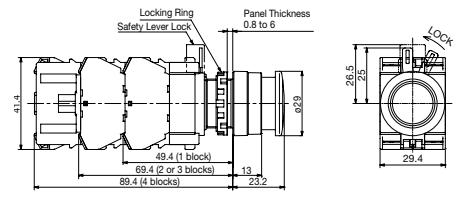
Flush (HW1B-M1, -A1)



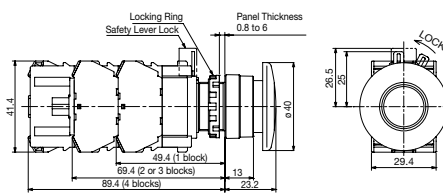
Extended (HW1B-M2, -A2)



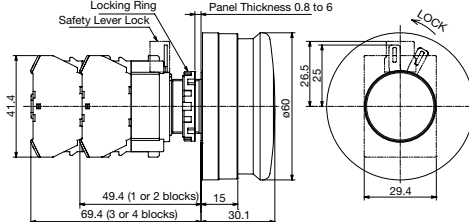
ø29mm Mushroom (HW1B-M3 -A3)



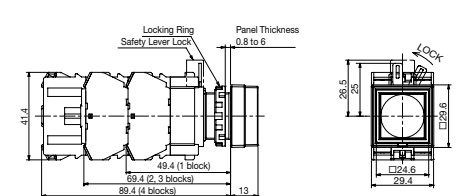
ø40mm Mushroom (HW1B-M4, -A4)



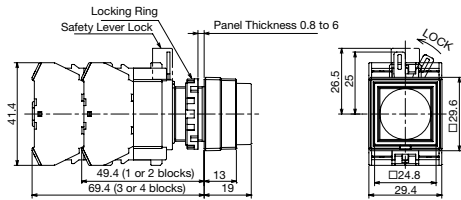
ø60mm Mushroom (HW1B-M5)



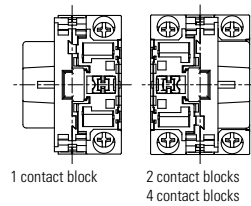
Square Flush (HW2B-M1, -A1)



Square Extended (HW2B-M2, -A2)

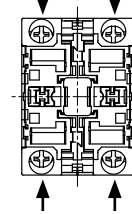


Contact Block (Bottom View)



Terminal Wiring

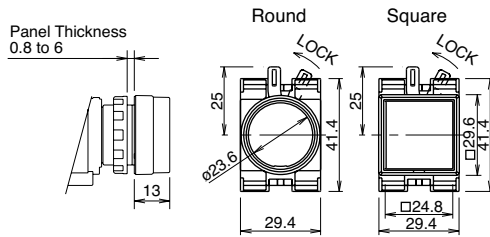
Arrows indicate access directions for wiring



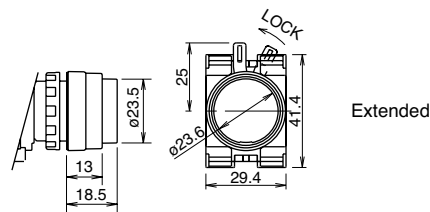
Dimensions (mm)

Operators

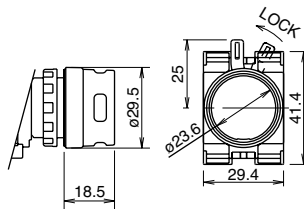
Flush (Round & Square)



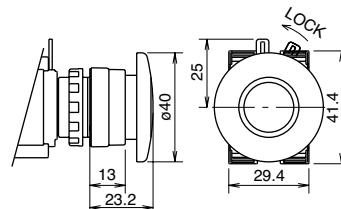
Extended



Extended with Full Shroud

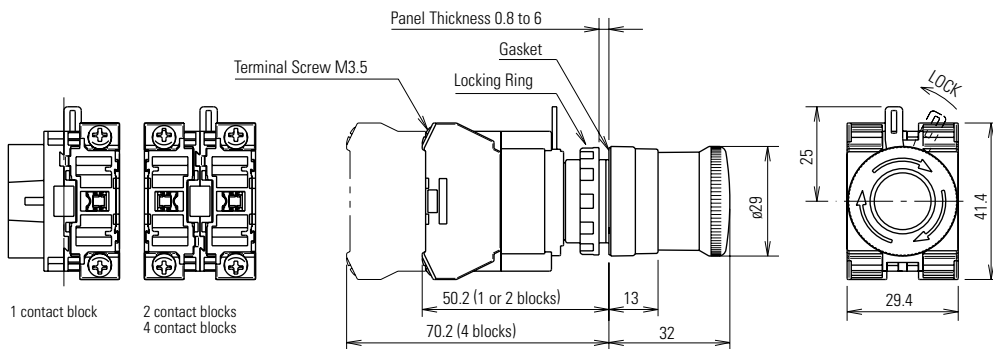


ø40mm Mushroom

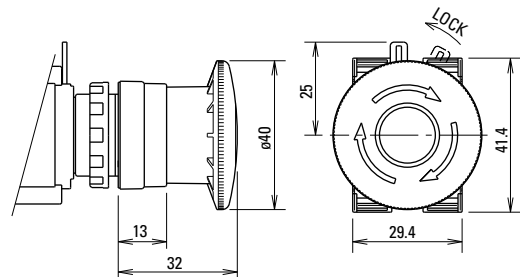


Emergency Stop Pushbuttons

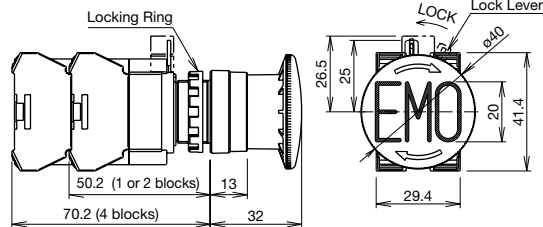
ø29mm Head Pushlock Turn Reset (HW1B-V3)



ø40mm Head Pushlock Turn Reset (HW1B-V4)

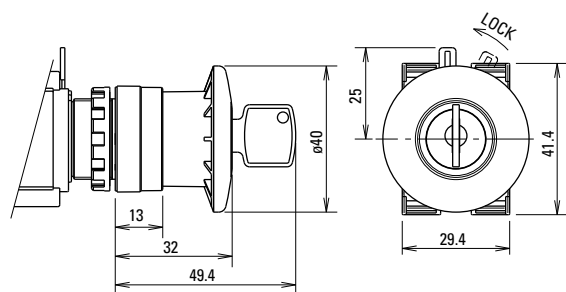


ø40mm Head EMO Pushlock Turn Reset (HW1B-V4)

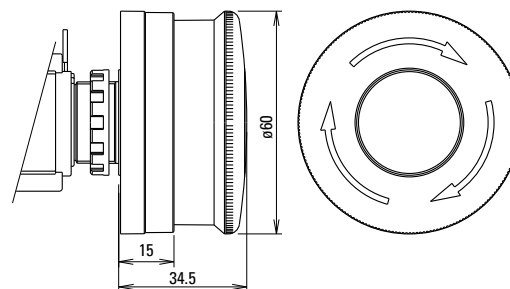


Dimensions (mm)

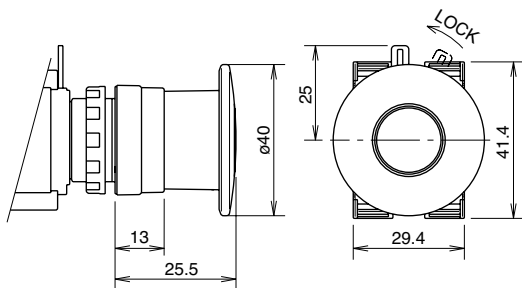
ø40mm Head Pushlock Key Reset (HW1B-X4)



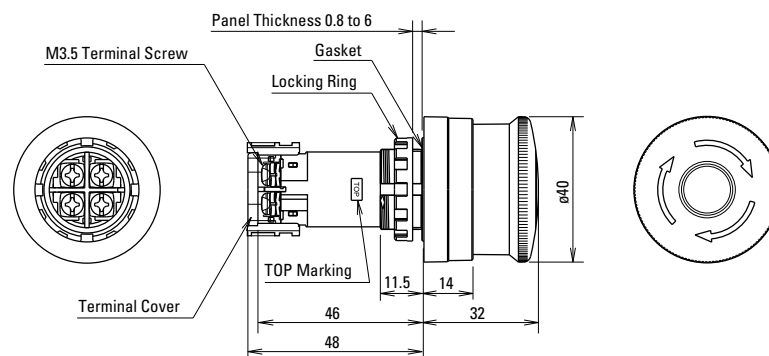
ø60mm Head Pushlock Turn Reset (HW1B-V5)



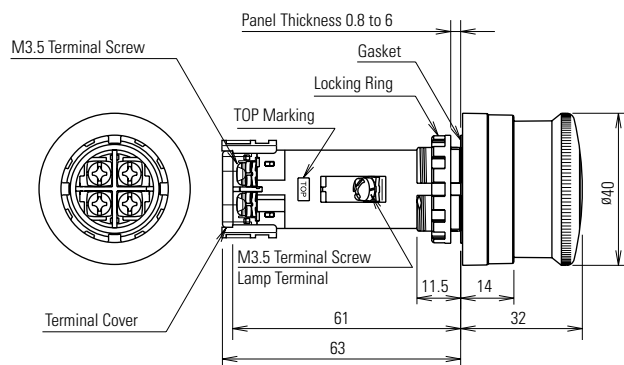
ø40mm Head Push-Pull (HW1B-Y2)



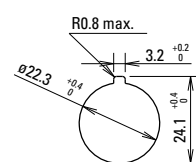
ø40mm Head Unibody Pushlock Turn Reset (HW1B-BV4)



Illuminated E-Stop Pushbuttons (HW1E-LV4)



Mounting Hole

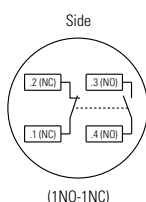


The minimum mounting centers shown below are applicable to E-Stop switches with one layer of contact blocks (two contact blocks). When two layers of contact blocks are mounted, determine the minimum mounting centers for ease of wiring.

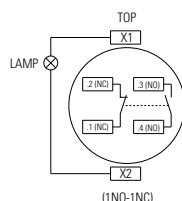
Unit	Vertical Spacing	Horizontal Spacing
HW1B-V3 HW1B-V4 HW1B-X4 HW1B-Y2	50 mm	50 mm
HW1B-V5	60 mm	60 mm

Terminal Arrangement (Bottom View)

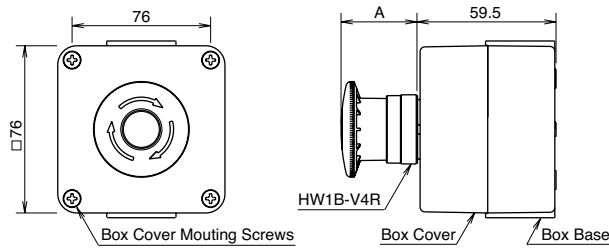
HW1E-BV4



HW1E-LV4

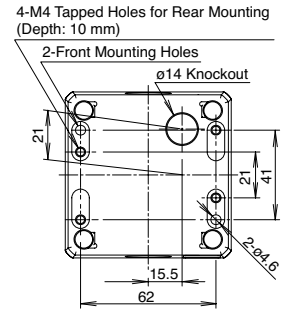


Emergency Stop Stations



Operator	Dimension A (mm)
Pushlock Turn Reset	32
Pushlock Key Reset	32 (Key inserted: 49.4)
Push Pull	25.5

Mounting Hole Layout



Dimensions (mm)

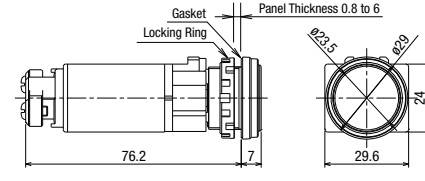
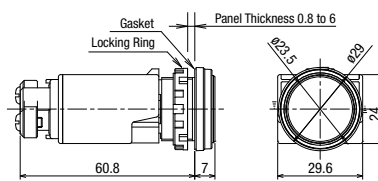
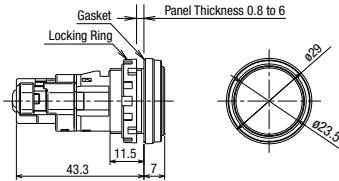
Pilot Lights

Round Flush Terminal screws: M3.5, integrated terminal cover

6, 12, 24V AC/DC, Without LED lamp

100/110V AC, 200/220V AC (240V AC maximum)

110V DC, 380V AC minimum



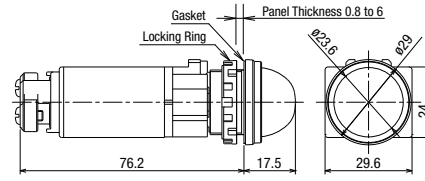
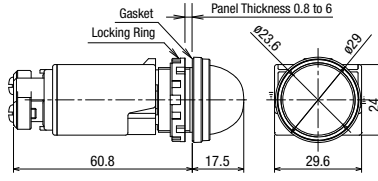
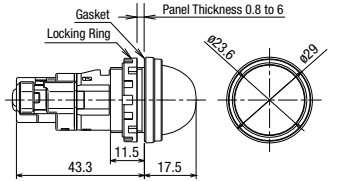
Dimensions (mm)

Extended Terminal screws: M3.5, integrated terminal cover

6, 12, 24V AC/DC, Without LED lamp

100/110V AC, 200/220V AC (240V AC maximum)

110V DC, 380V AC minimum

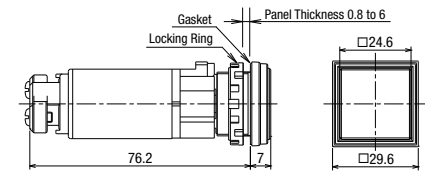
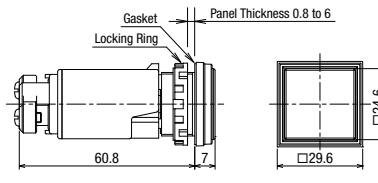
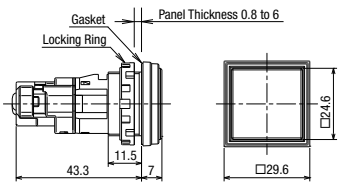


Square Flush Terminal screws: M3.5, integrated terminal cover

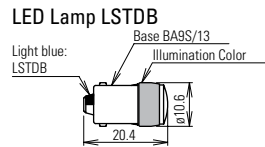
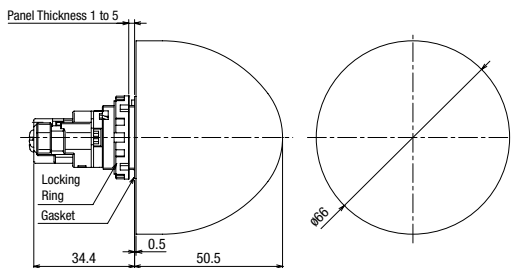
6, 12, 24V AC/DC, Without LED lamp

100/110V AC, 200/220V AC (240V AC maximum)

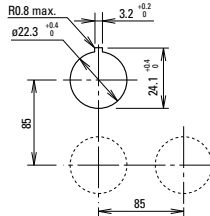
110V DC, 380V AC minimum



Jumbo Dome Pilot Light Terminal screws: M3.5, integrated terminal cover

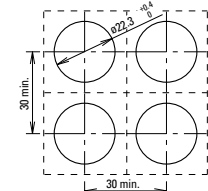


Mounting Hole Layout



Mounting Hole Layout

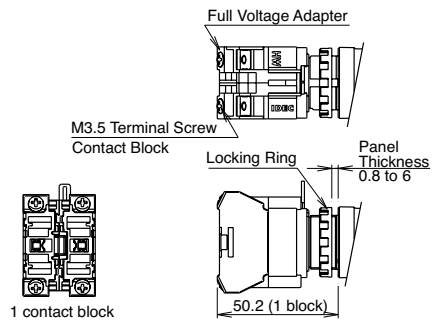
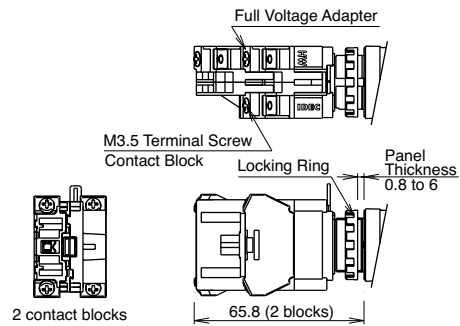
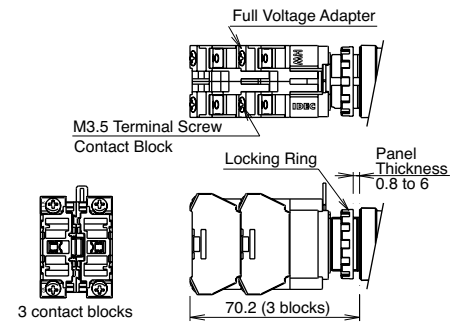
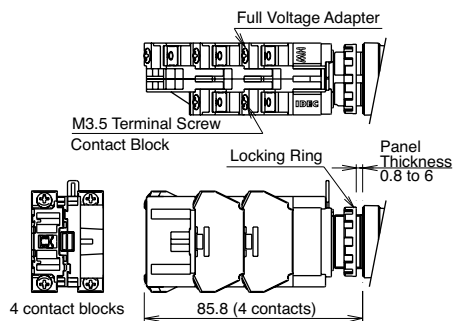
Close mounting on 30mm centers
Degree of protection: IP65



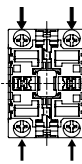
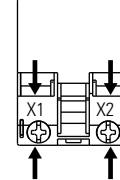
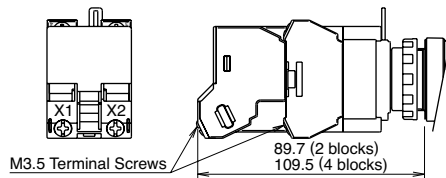
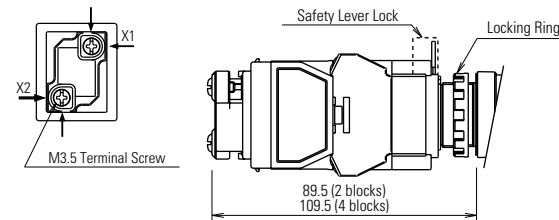
When mounting transformer or DC-DC converter type units on 30mm centers vertically and horizontally, keep the ambient temperature below 40°C.

Illuminated Pushbuttons

Full Voltage Models

1 Contact Block**2 Contact Blocks****3 Contact Blocks****Illuminated Pushbuttons con't****4 Contact Blocks****Terminal Wiring**

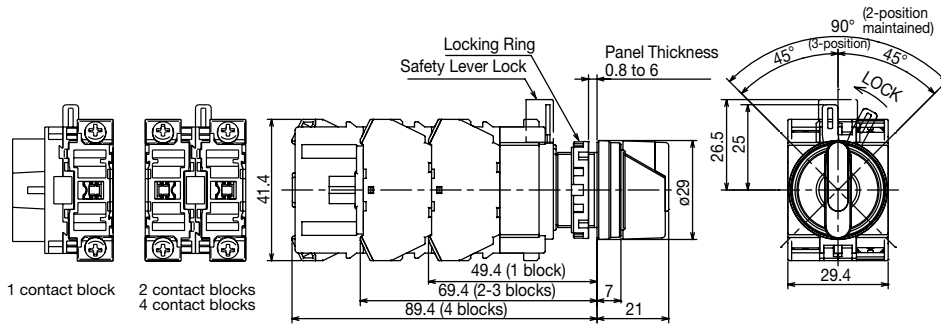
Arrows indicate access directions for wiring.

Contact Block**Full Voltage Adaptor****Transformer****Transformer Models****DC-DC Converter Models**

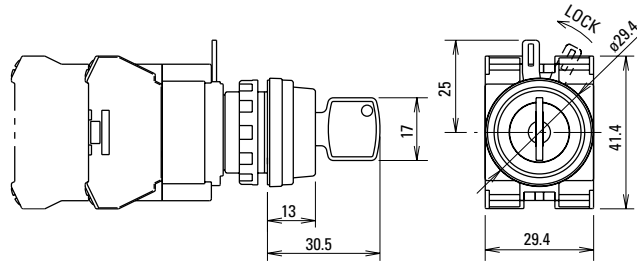
Dimensions (mm)

Non-Illuminated Selector & Key Switches

Knob Operator

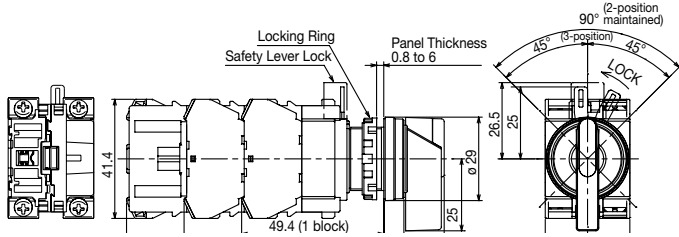


Key Operator

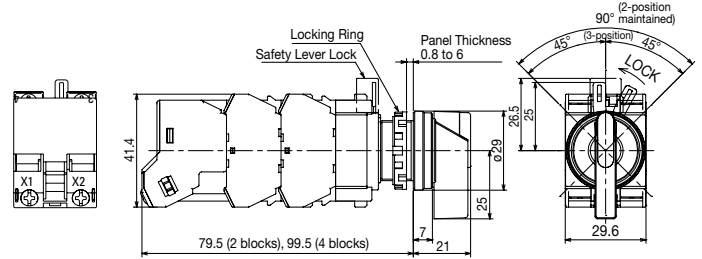


Illuminated Selector Switches

Full Voltage Model



Transformer Model

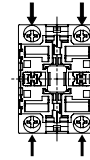


Dimensions (mm)

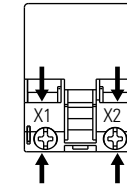
Terminal Wiring

Arrows indicate access directions for wiring.

Contact Block Full Voltage Adaptor

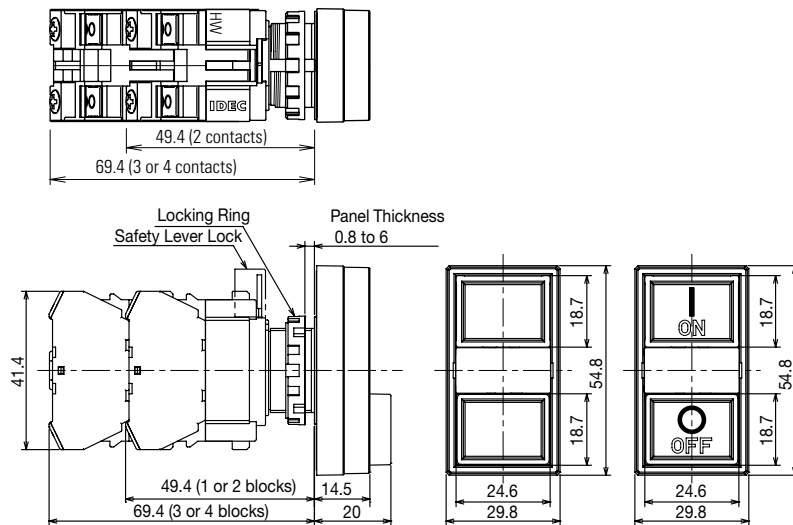


Transformer



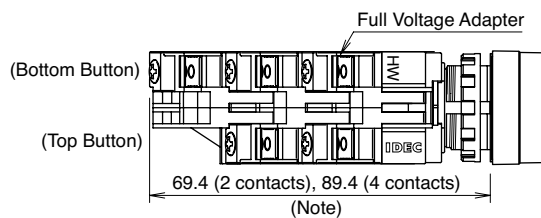
Dual Pushbutton

Without Pilot Light



With Pilot Light

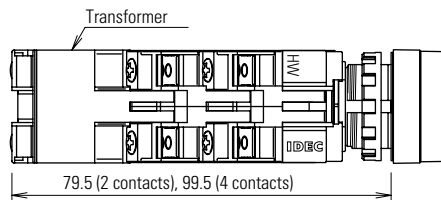
Full Voltage



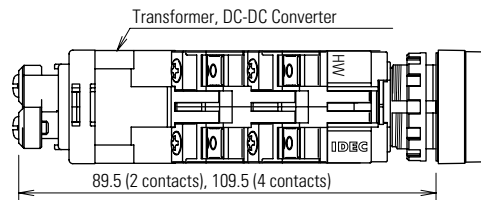
The depth of a 3-contact model depends on the combination of contact blocks at top and bottom pushbuttons.

Top Button	1 contact block	2 contact blocks
Bottom Button	2 contact blocks	1 contact block
Depth	89.4 mm	69.4 mm

Transformer (240V minimum)

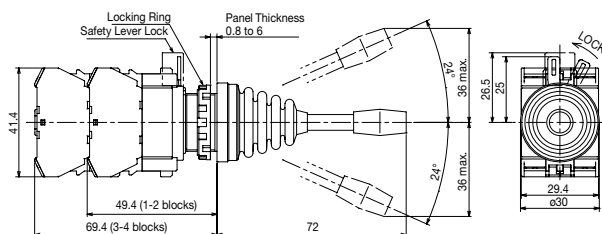


Transformer (480V)

**Monolever**

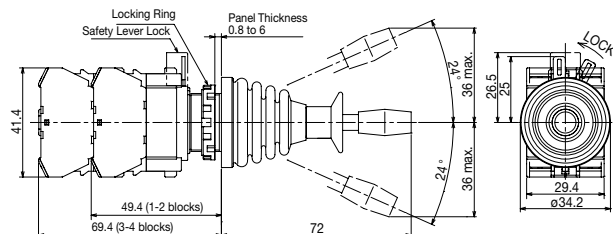
Dimensions

Standard Lever



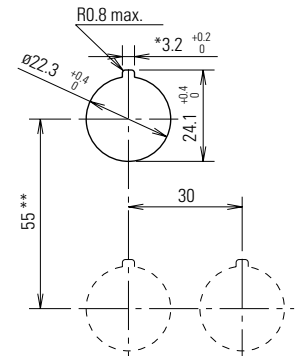
Interlocking Lever

All dimensions in mm.



Terminal Screws M3.5

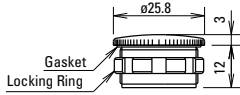
Integrated Terminal Cover

Mounting Hole Layout

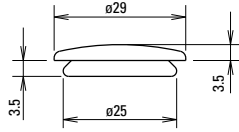
-The 3.2 mm recess is for preventing rotation and is not necessary when a nameplate or anti-rotation ring is not used.
 -When using the safety lever lock, determine the vertical spacing in consideration of convenience for installing and removing the safety lever lock.
 -Recommended vertical spacing: 100 mm
 -The minimum mounting centers are applicable to switches with one layer of contact blocks (two contact blocks). When two layers of contact blocks are mounted, determine the minimum mounting centers for ease of wiring.

Accessory Dimensions

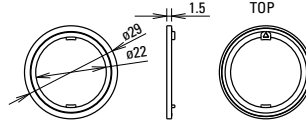
LW9Z-BM
Metallic Mounting Hole Plug



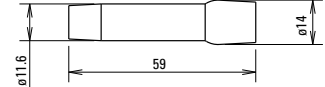
OB-31
Rubber Mounting Hole Plug



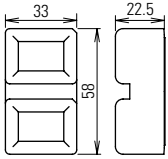
HW9Z-RL
Anti-Rotation Ring



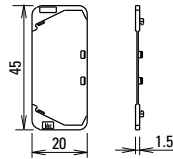
OR-55
Lamp/LED Removal Tool



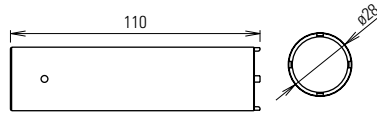
HW9Z-D7D
Dual Pushbutton Rubber Cover



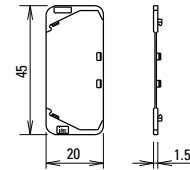
HW-VU1
Dual Pushbutton Barrier



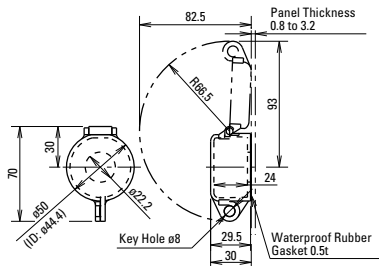
MW9Z-T1
Locking Ring Wrench



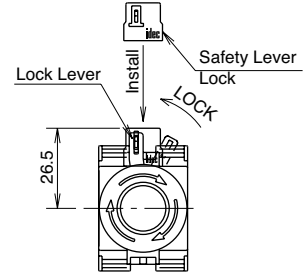
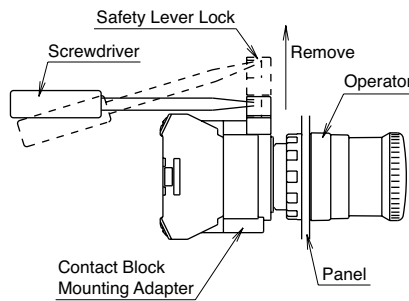
HW-VL1
Barrier



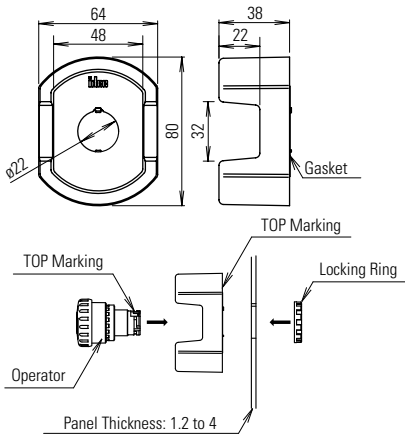
HW9Z-KL1
Padlock Cover



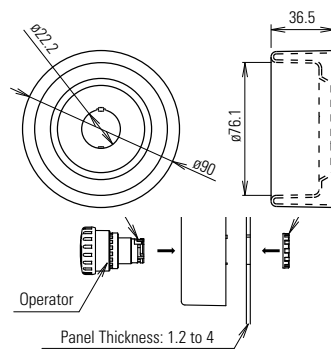
HWLS-TK1971
Safety Lever Lock



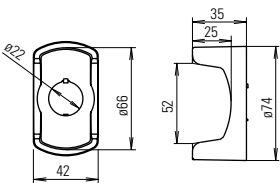
HW9Z-KG1



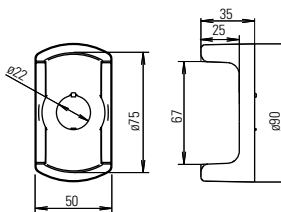
HW9Z-KG2



HW9Z-KG3



HW9Z-KG4



LSTD

