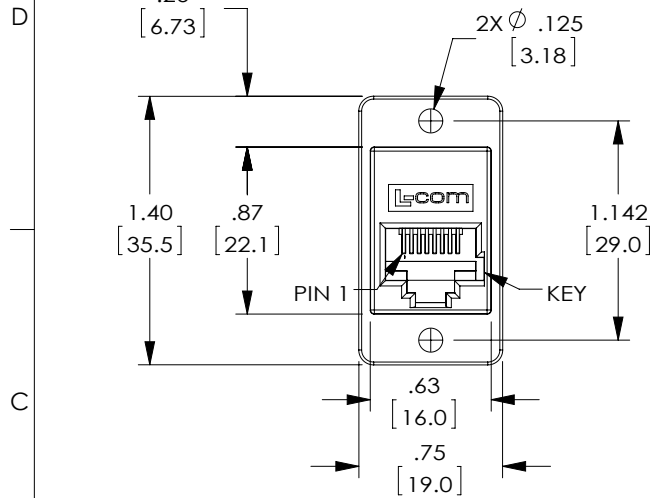
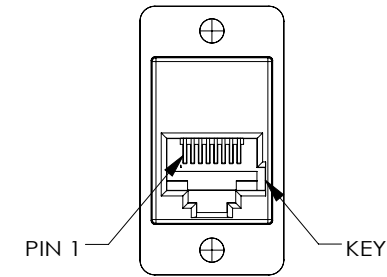
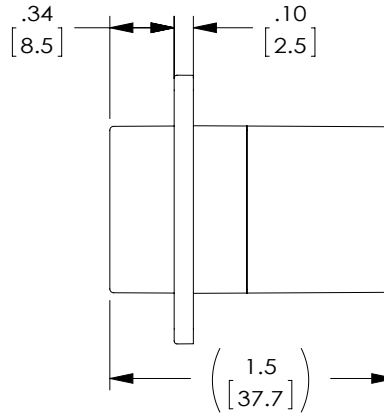


THE INFORMATION CONTAINED IN THIS DRAWING IS THE SOLE PROPERTY OF L-COM, INC.. ANY REPRODUCTION IN PART OR WHOLE WITHOUT THE WRITTEN PERMISSION OF L-COM, INC. IS PROHIBITED.

REVISIONS			
REV	DESCRIPTION	DATE	APPROVED
A	CN INITIAL RELEASE	10/27/17	D.CUI

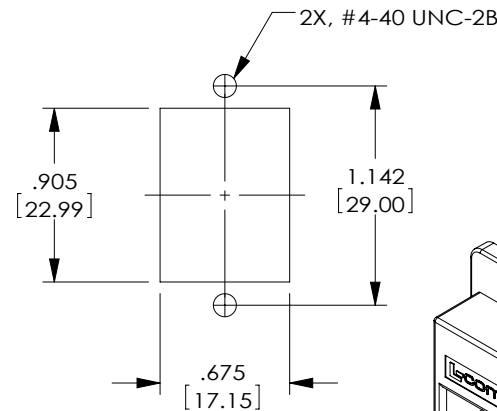


"J1"  
RJ45 JACK  
(8P8C)  
(KEYED)

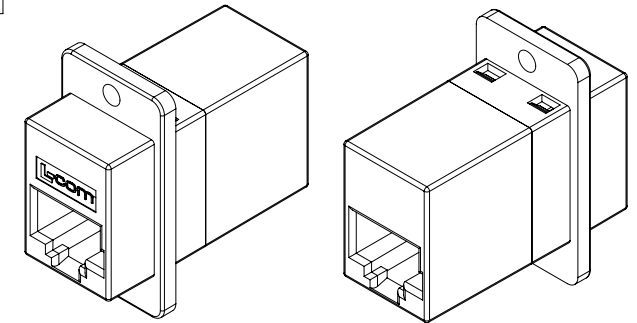


"J2"  
RJ45 JACK  
(8P8C)  
(KEYED)

WIRING MAP	
"J1"	"J2"
1	1
2	2
3	3
4	4
5	5
6	6
7	7
8	8



RECOMMENDED  
PANEL CUTOUT



#### NOTES:

##### MATERIAL:

HOUSING:ABS,UL94V-0,COLOR:BLACK  
CONTACTS:PHOSPHOR BRONZE  
CONTACT PLATING:GOLD,30 μ INCHES OVER NICKEL PLATING.

##### ELECTRICAL:

CURRENT RATING:2 AMPS (MAX.)  
VOLTAGE RATING:140 VDC

##### MISCELLANEOUS:

ALL DIMENSIONS SHOWN ARE FOR REFERENCE ONLY.  
OPERATING TEMPERATURE RANGE:-10°C TO +70°C.  
RATING APPLICATION: CATEGORY 3

COMPONENT SHALL BE INDIVIDUALLY PACKAGED IN  
ACCORDANCE WITH L-COM SPECIFICATION PS-0031.

##### REGULATORY COMPLIANCE:

CE2011/65/EU(RoHS DIRECTIVE)

UNLESS OTHERWISE SPECIFIED, DIMENSIONS ARE IN INCHES [mm] OVERALL CABLE LENGTH TOLERANCE: ≤12 [305] = +1 [25] / -0 >12 [305] ≤60 [1524] = +2 [51] / -0 >60 [1524] ≤120 [3048] = +4 [102] / -0 >120 [3048] ≤300 [7620] = +6 [152] / -0 >300 [7620] = +3% / -0% ALL OTHER DIMENSIONAL TOLERANCES: .X = ±.2 [5.08] .XX = ±.02 [1.51] .XXX = ±.005 [1.13] PROJECTION 	APPROVALS	DATE	 45 BEECHWOOD DRIVE NORTH ANDOVER, MA 01845
	DRAWN BY D.CUI	07/04/17	
	CHECKED BY S.PAN	07/04/17	
	APPROVED BY D.GUITADAURO	07/04/17	
CONFIGURATION DETAILS OF UNDIMENSIONED FEATURES MAY VARY COLOR VARIATIONS MAY OCCUR	CATEGORY TELECOM/MODULAR		PRODUCT DESCRIPTION CPLR PNL MNT 8X8K STRAIGHT BLK
	SIZE A	FSCM NO. 43321	
	DWG. NO. ECF5048SK-BK	REV. A	
	SCALE: NONE	CAD FILE: ECF5048SK-BK.SLDDRW	