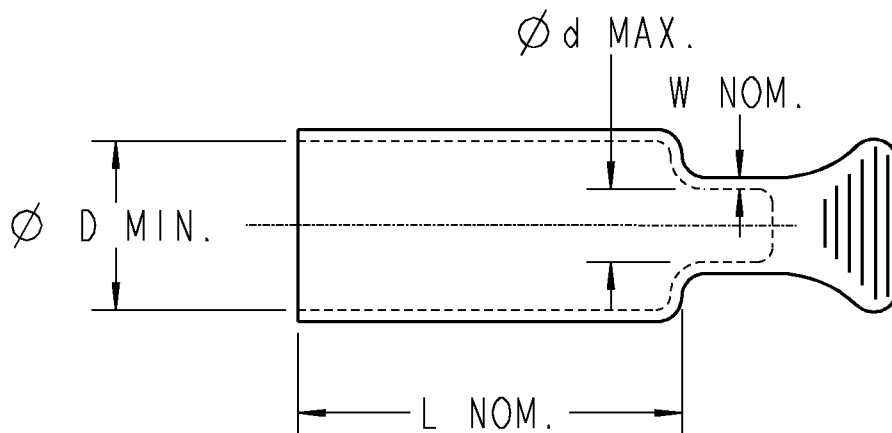




Shrink-Kon®



NOTES:

1. 3:1 SHRINK RATIO
 2. HEAVY WALL CROSS-LINKED POLYOLEFIN
 3. ADHESIVE LINED
 4. FLAME RETARDANT
 5. RATED 600V, 90°C
- * CSA CERTIFIED ONLY

CATALOG NUMBER	CABLE RANGE	Ø D EXPANDED	L EXPANDED	Ø d RECOVERED	W RECOVERED
HSC8-4	8-6 AWG	.51	2-1/2	.16	.09
HSC2-20	6-2 AWG	.75	2-1/2	.24	.09
HSC30-250	1-3/0 AWG	1.10	3	.35	.12
HSC300-600	2/0-50MCM	1.50	3-1/2	.47	.16
HSC700-1000	250-500MCM	2.00	3-1/2	.63	.16
HSC750	600-1000MCM	2.70	4	.87	.16
HSC300 *	800-1250MCM	3.50	4-1/2	1.18	.16
HSC500 *	1500-2500MCM	4.70	5-1/2	1.57	.17

GENERAL NOTES

1. ALL DIMENSIONS ARE FOR REFERENCE ONLY.
2. DIMENSIONS IN BRACKETS [] ARE IN METRIC UNITS.

www.tnb.com

Thomas & Betts

A Member of the ABB Group

REVISIONS

- | | |
|---|---|
| 1 | SEE ERN (2015846) FOR APPROVAL SIGNATURES & RELEASE DATE.
PROJECT NO: TM401345 |
|---|---|

DESCRIPTION:

SHRINK-KON HEAT SHRINKABLE END CAPS

ORIGINAL PROJECT NO / (ERN NO)

TM401345 / (2010303)

SHEET NO:

1 OF 1

REV. NO:

1

DRAWING NO:

WSD-000470