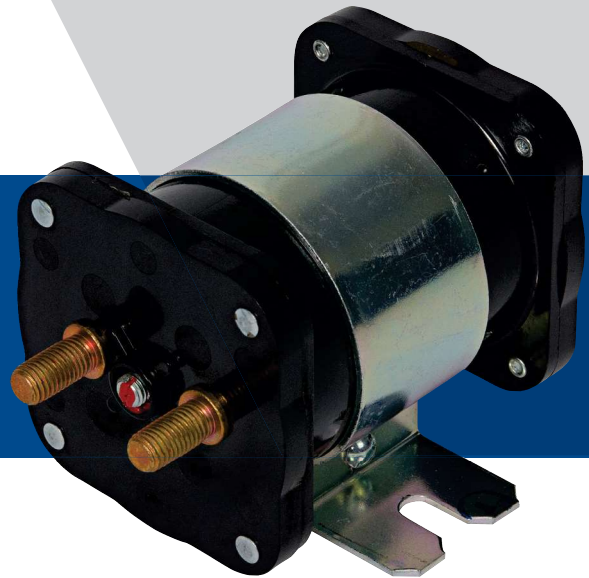


# Type 586 DC Power Contactor



- Water resistant
- Double-make or double-break contacts
- Capable of handling high and low current requirements
- Impact resistant phenolic casing

## SPECIFICATIONS

### Dielectric Strength

- 500 volts

### Temperature Range

- -40°F/-40°C to 149°F/65°C

### Mechanical Life (no load)

- 100,000 operations

### Electrical Life

(rated load—making and breaking 200 amp on NO contacts)

- 50,000 cycles

### Mounting Position

- Recommended mounting is vertical plane with coil terminals up

### Weight (approximate)

- SPNO: 24.0 oz.
- SPDT: 26.0 oz.

### Duty Cycle

- Continuous
- Intermittent: 10 seconds “on” maximum and minimum 60 seconds “off”.  
One minute “on” maximum and minimum 6 minutes “off”

### Hardware Torque Specification

- Contact Terminal: 60 inch-lbs. max.
- Coil Terminal: 12-18 inch-lbs

### Contacts

- Pole form: SPNO and SPDT
- Material: silver alloy
- Termination: 5/16- 24 UNF-2A thread

### CONTACT RATINGS

Volts DC	Normally open		Normally closed	
	Continuous	Inrush	Continuous	Inrush
6	200A	600A	100A	300A
12	200A	600A	100A	300A
24 & 36	200A	600A	100A	300A

### Coils

- Voltage: 6 V through 48VDC
- Termination: #10-32 UNF-2A thread
- Power (approximate)  
Continuous: 12 watts SPDT,  
8 watts SPNO

### Connections

- Coil isolated (two terminals)

### Minimum operating voltage

- 75% of rated coil voltage
- Maximum 10% over rated coil voltage

### COIL DATA

Volts DC	Resistance in Ohms			
	Intermittent*		Continuous	
	SPDT	SPNO	SPDT	SPNO
6	2.2	3.3	3.3	5.25
12	8.4	13.2	13.2	21.0
15	13.1	21.0	21.0	32.8
24	18.4	30.0	30.0	47.0
28	33.6	53.0	53.0	84.0
36	75.6	120.0	120.0	189.0
48	134.0	213.0	213.0	336.0

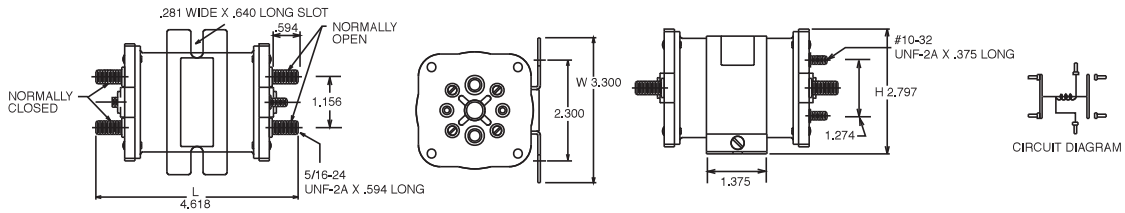
\*Intermittent—special request only

# Type 586 DC Power Contactor

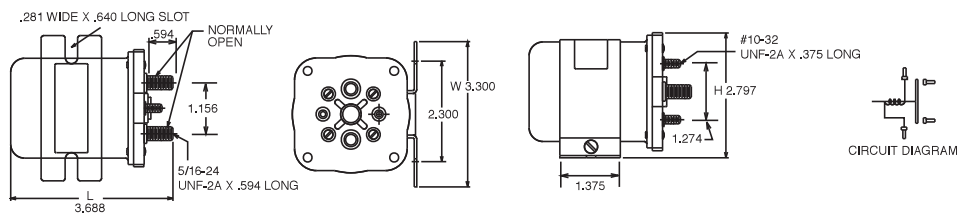
## APPLICATION NOTES

- Not all part number combinations are available. Please contact your Sales Representative for available part numbers.
- DC contactor applied in battery charging circuits should be protected from higher than rated voltage during charging. The service life may be affected by this condition and the DC contactor may or may not operate the circuit as intended.
- Circuits should be designed to provide safe operation should the DC contactor fail in either the open or closed position.

### SPDT: ISOLATED COIL



### SPNO: ISOLATED COIL



## TYPE 586 Part Numbering System

