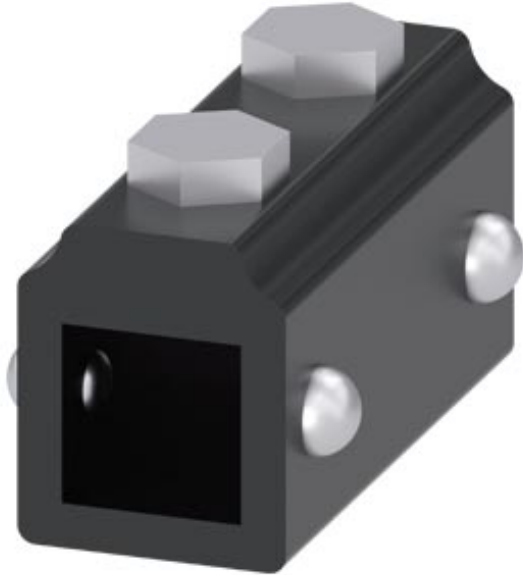







adapter 8x 8 mm Accessory for: Door-coupling rotary mechanism
3VA



| Model | |
|--------------------|---------|
| Product brand name | SETRON |
| Product details | |
| Product component | |
| • axis extension | No |
| Accessories | |
| accessories | Adapter |
| Mechanical Design | |
| Height | 14.5 mm |
| Width | 12 mm |
| Depth | 28 mm |
| Net weight | 24.5 g |
| Certificates | |

| General Product Approval | Declaration of Conformity | Shipping Approval | other |
|--|---|--|---|
|  CSA |  UL |  VDE |   EG-Konf. LRS Miscellaneous |

Further information

Information- and Downloadcenter (Catalogs, Brochures,...)

<http://www.siemens.com/lowvoltage/catalogs>

Industry Mall (Online ordering system)

<https://mall.industry.siemens.com/mall/en/en/Catalog/product?mlfb=8UD1900-2DA00>

Service&Support (Manuals, Certificates, Characteristics, FAQs,...)

<https://support.industry.siemens.com/cs/ww/en/ps/8UD1900-2DA00>

Image database (product images, 2D dimension drawings, 3D models, device circuit diagrams, ...)

http://www.automation.siemens.com/bilddb/cax_en.aspx?mlfb=8UD1900-2DA00

CAX-Online-Generator

<http://www.siemens.com/cax>

Tender specifications

<http://www.siemens.com/specifications>

