

AS-Interface M12 branch U_ASI without Uaux, with M12 socket



General technical data		
Type of device		AS-Interface accessories
Design of the product		AS-i M12 branch
Function		AS-i flat cable transition to M12
operating voltage according to AS-Interface specification	V	26.5 ... 31.6
Number sockets		1
Connections/ Terminals		
Connection system		insulation piercing method for AS-Interface flat cable
AS interface		
• Connection		1x M12 socket
Inputs		
Inputs socket assignment		1 = AS-i "+" 3=AS-i "-"
Mechanical data		
Type of mounting		screw fixing
Contacts Load rating max	A	2
Ambient conditions		

Ambient temperature	°C	-25 ... +60
Ambient temperature during storage	°C	-25 ... +85
degree of protection		IP67

Certificates/ approvals

General Product Approval	Shipping Approval	other
--------------------------	-------------------	-------



[Confirmation](#)

Further information

Information- and Downloadcenter (Catalogs, Brochures,...)

<https://www.siemens.com/ic10>

Industry Mall (Online ordering system)

<https://mall.industry.siemens.com/mall/en/en/Catalog/product?mlfb=3RX9801-0AA00>

Cax online generator

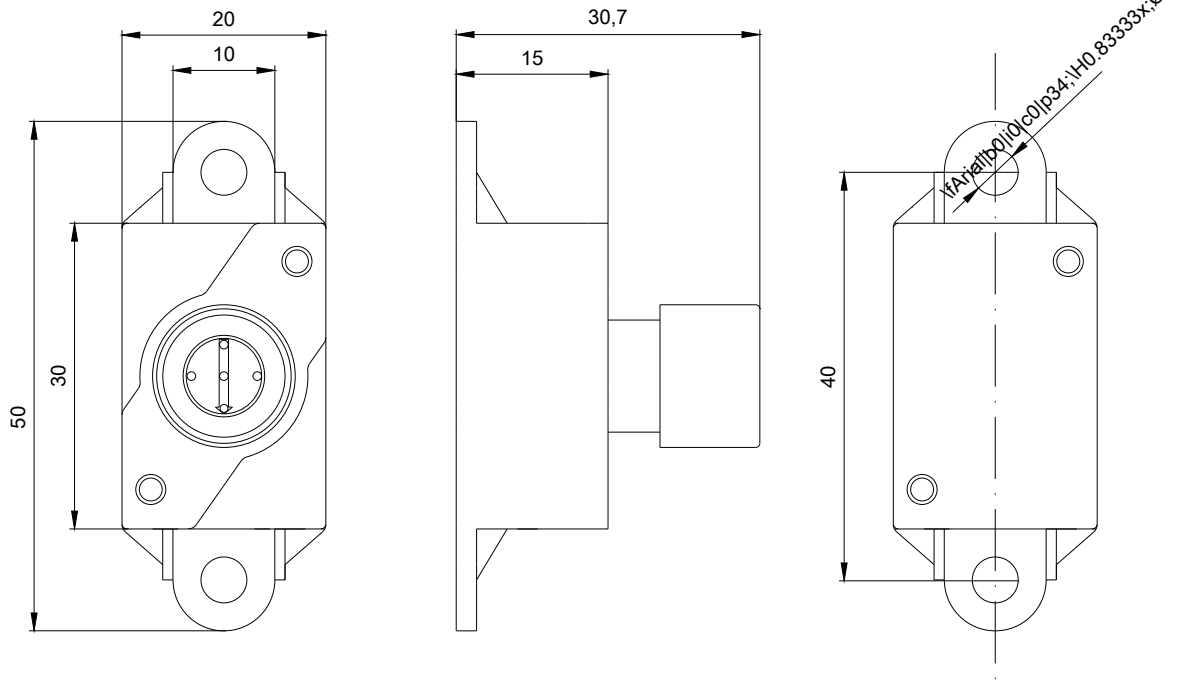
<http://support.automation.siemens.com/WW/CAXorder/default.aspx?lang=en&mlfb=3RX9801-0AA00>

Service&Support (Manuals, Certificates, Characteristics, FAQs,...)

<https://support.industry.siemens.com/cs/ww/en/ps/3RX9801-0AA00>

Image database (product images, 2D dimension drawings, 3D models, device circuit diagrams, EPLAN macros, ...)

http://www.automation.siemens.com/bilddb/cax_de.aspx?mlfb=3RX9801-0AA00&lang=en



last modified:

03/05/2020