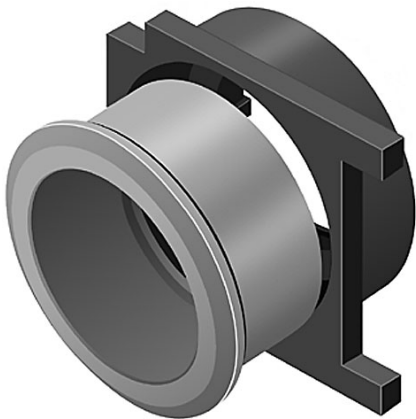


EAO – Your Expert Partner for Human Machine Interfaces

61-9933.0 - Front bezel set for indicator, pushbutton, illuminated pushbutton, flush design

61-9933.0 - Front bezel set for indicator, pushbutton, illuminated pushbutton, flush design



Attention: The preview is based on a sample product. This can differ from your current configuration.

Mounting

Mounting cut-out
Design

Ø 22,3 mm
flush

Front

Front bezel material
Front bezel colour
Front dimension
Front shape

Aluminium
natural anodized
Ø 25 mm
round

Other Attributes

Weight

0,006 kg

Actuator

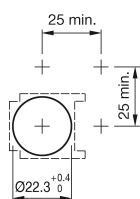
Housing colour
Housing material

natural
Aluminium

EAO – Your Expert Partner for Human Machine Interfaces

61-9933.0 - Front bezel set for indicator, pushbutton, illuminated pushbutton, flush design

Mounting cut-outs



Additional information

Pitch of the front plate mounting holes must agree with the printed circuit board holes $\varnothing 3.5$

The colour of anodized aluminium parts can vary due to technical production reasons