

PB 404

**709 Connectors
Pair-At-A-Time Splicing**

A single 709 Quick Snap Connector provides cost-saving pair-at-a-time splicing. The single pair connector design reduces the number of connectors and the size of the splice bundle, thus saving time, sleeve material and encapsulant.



Note: Connectors shown above are for reference only.

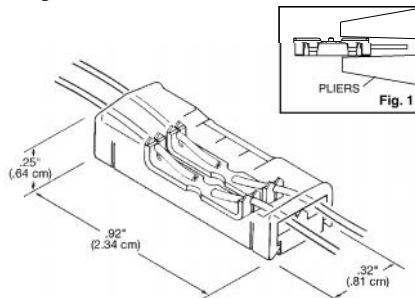
- Accommodates 22-26 gauge copper conductors
- Pair-per-connector design produces smaller, neater splice bundles
- Available with a filled, moisture-resistant compound that provides protection from the elements in the outside plant environment
- Unfilled version provides flame-retardant protection for buildings and cable entrance applications
- Extended locking latches help improve the locking range of the connector
- Increased chamfer size improves the seating of the contacts and prevents movement within the connector
- Minimum installation effort required
- USDA Rural Development Listed
- UL Listed



Installation

Splicing:

1. DO NOT remove wire insulation.
2. Raise end covers and fully insert pair approximately 1/2".
3. Press connector covers closed with parallel jaw pliers until both latches are secure (Fig. 1). Do not use excessive force.



Dielectric Strength

Withstands the following: 60 Hz AC voltages for at least one minute.

Connector Type	AC-KV	
	Pair to Pair	Tip to Ring
Filled	3.0	3.0
Unfilled	1.5	1.5

Temperature

Withstands 1024 cycles from -40 °C (-40 °F) to 60 °C (140 °F). Cycle is 2 hours with 1/2 hour dwells at extreme temperatures.

Insulation Diameter

Will accommodate wire sizes up to .054" (1.37mm) in diameter. This includes 22 gauge HDPE.

Humidity

Withstands 300 cycles from 4 °C (40 °F) to 60 °C (140 °F) at 95% relative humidity. Cycle is 12 hours with about a 5 hour dwell at extreme temperatures.

Contact Resistance

Using a maximum criterion of two milliohms per connection, there will be no more than one failure per 10,000 connections over the life of the installation.

Pull Strength

Connected wire withstands the following axially applied force:

Wire Gauge	% Breaking Strength
26	80
24	70
22	50

Insulation Resistance

Greater than 20 x 10⁹ ohms at 250 V DC.

709SC Gel Specifications Include the Following

- Shelf Life: 2 years @ 32.2 °C (90 °F)
- Dielectric Resistance: 1 KVA @ 5mm
- Boiling Point: 310 °C (590 °F)
- Melting Point: 95 °C (203 °F)
- Freezing Point: -30 °C (-22 °F)
- Specific Gravity: 0.94

Part Number	Description	Qty Per Carton	Order By
709SC	Filled 709 Connector (Pink)	200	Carton
709SD	Dry, Flame-Retardant 709 Connector (Yellow)	200	Carton
709CD	Half-Tap Adapter for 709 Connector (White)	400	Carton