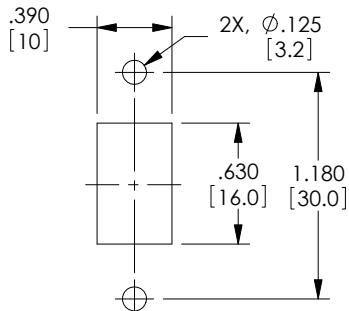
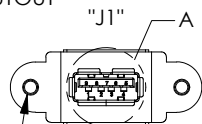


THE INFORMATION CONTAINED IN THIS DRAWING IS THE SOLE PROPERTY OF L-COM, INC. ANY REPRODUCTION IN PART OR WHOLE WITHOUT THE WRITTEN PERMISSION OF L-COM, INC. IS PROHIBITED.

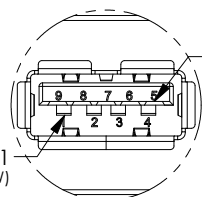
REVISIONS			
REV	DESCRIPTION	DATE	APPROVED
A	INITIAL RELEASE	2/8/12	D.GRIFFIN
B	ECNS976: CORRECTED JACK ORIENTATION	02/15/12	D.FP
C	ECN 7494: CLARIFIED WIRE MAP, UPD ROHS, FORMAT, DWG LAYOUT	7/25/14	D. DESJARDIN



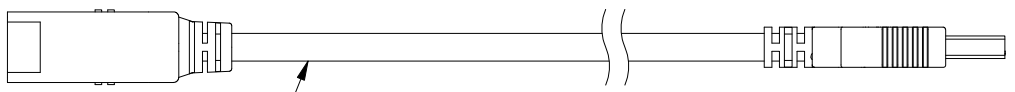
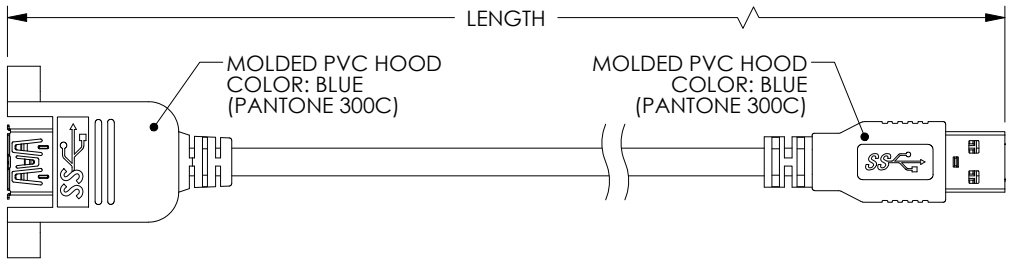
RECOMMENDED  
PANEL CUTOUT



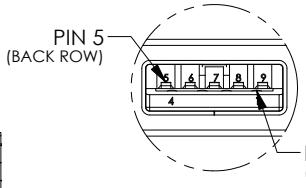
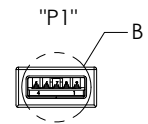
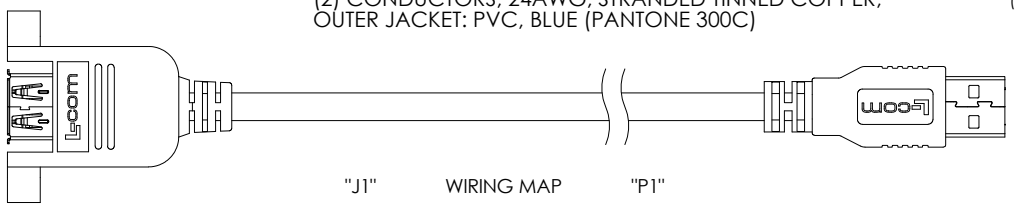
2X, 4-40 UNC-2B  
THREADED INSERT  
(EMBEDDED)  
PEM "STKB-440-4"  
OR EQUIVALENT



DETAIL A



UL 20276,  
(2) SHIELDED TWISTED PAIRS, 30AWG WITH ALUMINUM MYLAR SHIELD  
STRANDED TINNED COPPER AND DRAIN WIRE,  
(1) UNSHIELDED TWISTED PAIR, 30AWG, STRANDED TINNED COPPER,  
(2) CONDUCTORS, 24AWG, STRANDED TINNED COPPER,  
OUTER JACKET: PVC, BLUE (PANTONE 300C)



DETAIL B

**NOTES:**

**MATERIAL:**  
**SERIES "A" JACK:**  
PANEL MOUNT HOUSING: PVC  
CONNECTOR PLASTIC: (BLUE) PBT WITH GLASS FIBER  
CONNECTOR CONTACTS: BRASS  
CONNECTOR SHELL: SUS

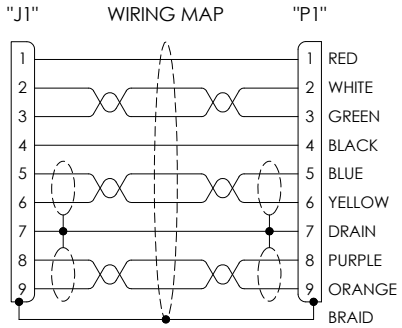
**SERIES "A" PLUG:**  
CONNECTOR SHELL: SPCC  
CONNECTOR PLASTIC: (BLUE) PBT WITH GLASS FIBER, UL94V-0  
CONNECTOR CONTACTS: PHOSPHOR BRONZE

**FINISH:**  
CONNECTOR CONTACTS: GOLD, 30μINCHES  
CONNECTOR SHELL: NICKEL

**ENVIRONMENTAL:**  
OPERATING TEMPERATURE: -20°C TO +80°C

**MISCELLANEOUS:**  
CABLE ASSEMBLY SHALL BE TESTED FOR CONTINUITY.  
CABLE ASSEMBLY SHALL BE INDIVIDUALLY PACKAGED IN  
ACCORDANCE WITH L-COM SPEC. PS-0031

**REGULATORY COMPLIANCE:**  
CE2011/65/EU (RoHS DIRECTIVE)



PART NUMBER	LENGTH METERS [FEET]
UPMAA-30-03M	0.3 [0.98]
UPMAA-30-05M	0.5 [1.64]
UPMAA-30-1M	1.0 [3.28]
UPMAA-30-2M	2.0 [6.56]
UPMAA-30-3M	3.0 [9.84]

UNLESS OTHERWISE SPECIFIED, DIMENSIONS ARE IN INCHES [mm] OVERALL CABLE LENGTH TOLERANCE: ≤12 [305] = +1 [25] / -0 >12 [305] ≤60 [1524] = +2 [51] / -0 >60 [1524] ≤120 [3048] = +4 [102] / -0 >120 [3048] ≤300 [7620] = +6 [152] / -0 >300 [7620] = +5% / -0% ALL OTHER DIMENSIONAL TOLERANCES: .X = ±.2 [5.08] .XX = ±.02 [1.51] .XXX = ±.005 [1.13]	APPROVALS DRAWN BY D. PARHAM CHECKED BY D. CASTRO APPROVED BY S. SMITH	DATE 09/22/2011 09/22/2011 09/27/2011	<b>L-com</b> Global Connectivity 45 BEECHWOOD DRIVE NORTH ANDOVER, MA 01845
	CONFIGURATION DETAILS OF UNDIMENSIONED FEATURES MAY VARY		CATEGORY <b>USB</b>
	COLOR VARIATIONS MAY OCCUR		PRODUCT DESCRIPTION <b>CA USB 3.0 A PNL/AM</b>
	PROJECTION 	SIZE <b>A</b>	FSCM NO. <b>43321</b>
SCALE: NONE		CAD FILE: UPMAA-30.SLDRW	SHEET 1 OF 1