

## RAMO 22 S, M12, round collar, 2 NO, Gold, M12 4-pin A-coded, frontring black, 1 x 40°, momentary contact function

**NEW**


### fields of application

- › Measurement-control-regulation
- › Electrical engineering
- › Mechanical and system engineering
- › Signalling systems
- › Vehicle construction
- › Chemical industry
- › Industrial robots

### special features

- › Precise haptics
- › Safe gold contacts
- › Simple M12 plug&play connection
- › Protected contacts due to sealed housing



### description

Selector switch with various switching positions and M12 terminal

### technical data

#### › general

illuminated	No
Color	black
Bezel color	white
Collar color	black
Front ring color	black
Collar shape	round
Operating temperature, min.	-40 °C
Operating temperature, max.	85 °C
Storage temperature, min.	-40 °C
Storage temperature, max.	90 °C
Shock resistance according to standard IEC 60068-2-27	30 g at 11 ms amplitude semi-sinusoidal
Packaging	Box
Packaging unit	2 pcs.
Environment resistance	IEC 60068-2-14 IEC 60068-2-30 IEC 60068-2-78
Operating life	200,000 Cycles
B10	250,000 Cycles
Degree of protection, front side, according to DIN EN 60529	IP65
Degree of protection, rear side, according to DIN EN 60529	IP65

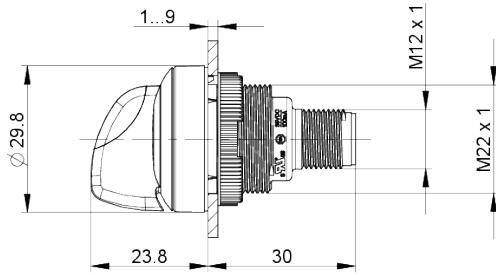
#### direct links

- › [RAFI eCatalog](#)

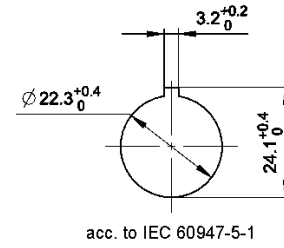
UL Enclosure Type Rating front side	type 4X
Salt-spray resistance according to standard	IEC 60068-2-11
RoHS compliant	Yes
REACH compliant	Yes
Potential free	no
oscillation resistance according to standard IEC 60068-2-6	5 g at 10...500 Hz
SAP MOQ order	2
<b>&gt; mounting diameters</b>	
Mounting hole	22.3 mm
Mounting depth	30.05 mm
Installation height	23.83 mm
Grid, min.	30 mm
Outside dimension, length	29.8 mm
Outside dimension, width	29.8 mm
Outside dimension, height	53.88 mm
<b>&gt; mechanical data</b>	
Actuation function	momentary contact function
Contact function	2 NO
Contact material	Gold
Rotating angle	1 x 40°
Fixing	Threaded ring
Terminal on the rear	M12 4-pin A-coded
PIN 1	Normally open contact 1 Normally open contact 2
PIN 2	Normally open contact 2
PIN 4	Normally open contact 1
<b>&gt; electrical data</b>	
Operating voltage of the luminous element, min.	22 V
Operating voltage of the luminous element, max.	26 V
Operating current of the luminous element, max.	25 mA
Rated voltage, min.	10 V
Rated voltage, max.	32 V
Rated current, max.	0.1 A

**drawings**

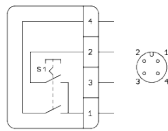
**Dimensioned drawing**



**Mounting hole drawing**



**Schematic diagram**



**Schematic diagram**

