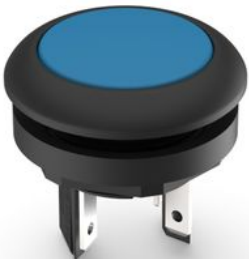


# LUMOTAST 16, illuminated pushbutton, round collar, momentary contact function, frontring black, 1 NO, bezel blue

**NEW**


## fields of application

- › Measurement-control-regulation
- › Electrical engineering
- › Mechanical and system engineering
- › Signalling systems
- › Handheld terminals
- › Industrial robots
- › Model construction

## special features

- › Illuminated by integrated LED
- › Option: C-LAB variant with replaceable legend inserts
- › Round mounting hole, diameter 16.2 mm
- › Mounting depth: 18 mm
- › Terminal: male quick-connect terminal 2.8 x 0.5 mm
- › Gold or silver contacts
- › Contacts: Standard: 1NO
- › max 35 V / 100 mA
- › Water jet protection class IP 65 and IP 67 on front



## description

Through the use of RAFI tactile switches, the LUMOTAST 16 illuminated pushbuttons offer crisp, tactile feedback – with a distinct key click. They offer an impressively wide range of possible industrial uses and applications.

## technical data

### › general

|  |                    |
|--|--------------------|
| illuminated  | Yes                |
| Bezel color  | blue               |
| Collar color   | black              |
| Front ring color   | black              |
| Luminous element color                                   | white              |
| Collar shape   | round              |
| Operating temperature, min.                              | -25 °C             |
| Operating temperature, max.                              | 70 °C              |
| Storage temperature, min.                                | -40 °C             |
| Storage temperature, max.                                | 80 °C              |
| Vibration-resistance according to standard IEC 60068-2-6 | 5 g at 10 - 500 Hz |
| Packaging  | Box                |
| Packaging unit   | 10 pcs.            |
| Operating life   | 500,000 Cycles     |
| B10  | 600,000 Cycles     |

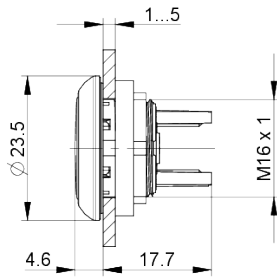
### direct links

- › [RAFI eCatalog](#)

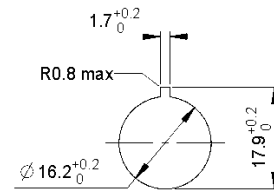
|   |                                       |
|---|---------------------------------------|
| Degree of protection, front side, according to DIN EN 60529 | IP65<br>IP67                          |
| UL Enclosure Type Rating front side                         | type 1                                |
| RoHS compliant  | Yes                                   |
| REACH compliant   | Yes                                   |
| SAP MOQ order   | 10                                    |
| <b>&gt; mounting diameters</b>                              |                                       |
| Mounting hole   | 16.2 mm                               |
| Mounting depth  | 18 mm                                 |
| Installation height   | 4.6 mm                                |
| Outside dimension, length                                   | 23.5 mm                               |
| Outside dimension, width                                    | 23.5 mm                               |
| Outside dimension, height                                   | 22.3 mm                               |
| Collar dimension  | 23.5 mm                               |
| <b>&gt; mechanical data</b>                                 |                                       |
| Actuation function  | momentary contact function            |
| Contact function  | 1 NO                                  |
| Contact system  | Snap-action contact                   |
| Contact material  | Gold                                  |
| Fixing  | Threaded ring                         |
| Threaded ring torque, max.                                  | 0.8 Nm                                |
| Terminal on the rear  | Flat quick-connect terminal 2.8 x 0.5 |
| Lötbarkeit  | No                                    |
| <b>&gt; electrical data</b>                                 |                                       |
| Rated insulation voltage                                    | 42 V                                  |
| Operating voltage of the luminous element, min.             | 10 V                                  |
| Operating voltage of the luminous element, max.             | 32 V                                  |
| Operating current of the luminous element, max.             | 20 mA                                 |
| Rated voltage, min.   | 0.02 V                                |
| Rated voltage, max.   | 35 V                                  |
| Rated voltage, max. acc. to UL 60947                        | 30 V AC (42,2 V peak)                 |
| Rated current, min.   | 0.0001 A                              |
| Rated current, max.   | 0.1 A                                 |
| Rated power, max.   | 1 W                                   |

**drawings**

**Dimensioned drawing**



**Mounting hole drawing**



**Schematic diagram**

