

LS 92 Ex i

Throughbeam photoelectric sensors

en 12-2017/02 50111477-03

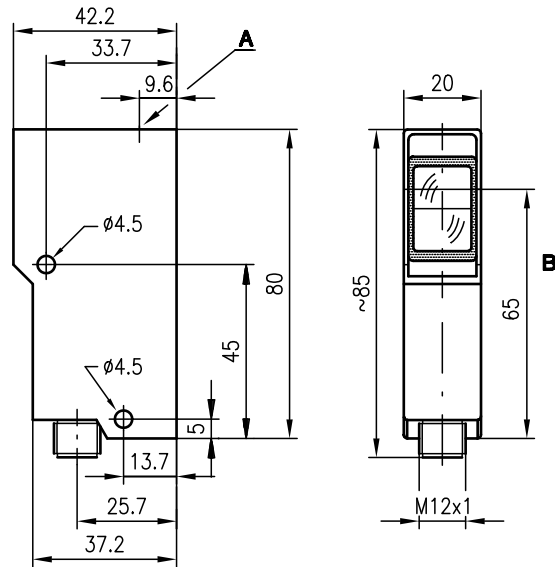


0 ... 15.6m



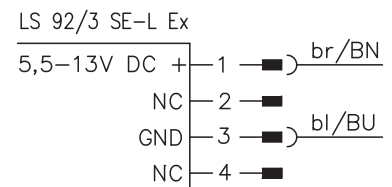
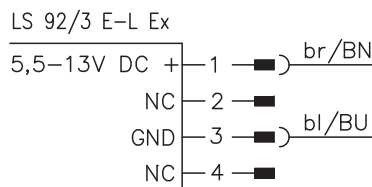
- Compact design with robust diecast zinc housing and glass optics for protection against environmental influences
- Switching output acc. to IEC 60947-5-6 (NAMUR)
- EU type examination certificate DMT 03 ATEX E 029
- Ex II 2G Ex ia IIC T6 Gb
- Ex II 2D Ex ia IIIB T 80°C Db
- For explosive gas atmospheres of sub-group IIC and non-conductive dusts acc. to subgroup IIIB

Dimensioned drawing



- A Indicator diode
- B Optical axis

Electrical connection



Accessories:

(available separately)

- Mounting systems (BT 92, UMS 1)
- Isolated switching amplifier (VS 403...)
- Blue connection cable for intrinsically safe circuits:
 KB-092-5000-4 ... Ex 50113399
 KB-092-5000-4A ... Ex 50113400

We reserve the right to make changes • PAL_LS92Ex_en_50111477_03.fm

Specifications

Optical data

Typ. operating range limit ¹⁾	0 ... 15.6m
Operating range ²⁾	0 ... 12m
Light source	LED (modulated light)
Wavelength	880nm (infrared light)
Intensity	< 1.1mW/mm ²

Timing

Switching frequency	60Hz
Response time	8.5ms
Readiness delay	≤ 100ms

Electrical data

Nominal voltage	8.2VDC
Operating voltage U _B	5.5 ... 13VDC (incl. residual ripple)
Residual ripple	max. 0.35V _{SS}
Bias current (light path interrupted)	≤ 1mA
Switching output	NAMUR (IEC 60947-5-6)
Function characteristics	light switching (light/dark setting on switching amplifier)

Indicators

Yellow LED	light path free
------------	-----------------



Mechanical data

Housing	diecast zinc
Surface	anti-static epoxy coating
Optics	glass
Weight	140g
Connection type	M12 connector

Environmental data

Ambient temp. (operation/storage)	-20°C ... +50°C / -30°C ... +70°C
VDE safety class ³⁾	II
Protective circuit ⁴⁾	2
Degree of protection	IP 67
Light source	exempt group (in acc. with EN 62471)
Standards applied	IEC 60947-5-2

Explosion protection

Certification	 II 2G Ex ia IIC T6 Gb	 II 2D Ex ia IIIB T 80°C Db
Maximum safe voltage	U _{max} 13V	
Maximum safe current	I _{max} 40mA	
Internal capacitance C _i	≤ 70nF	
Internal inductance L _i	≤ 200µH	

- 1) Typ. operating range limit: max. attainable range without function reserve
- 2) Operating range: recommended range with function reserve
- 3) Rating voltage 250VAC
- 4) 2=polarity reversal protection

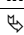


Order guide

	Designation	Part no.
Transmitter and receiver	LS 92/3-L Ex	
Transmitter	LS 92/3 Se-L Ex	50080722
Receiver	LS 92/3 E-L Ex	50080721

Tables

Diagrams

Remarks

Operate in accordance with intended use!
<ul style="list-style-type: none">  This product is not a safety sensor and is not intended as personnel protection.  The product may only be put into operation by competent persons.  Only use the product in accordance with the intended use.

- For operation in potentially explosive atmospheres, an isolated switching amplifier is required.
- One isolated switching amplifier each is required per device, receiver or transmitter.

Operating Instructions for the 92 Ex Series for Use in Potentially Explosive Areas

The sensors produced by Leuze electronic GmbH + Co. KG for use in potentially explosive areas are sensors which function on the optical electronic principle. Without making physical contact, these sensors detect objects which are located in or which pass through the light beam.

The devices of the 92 Ex series (LS throughbeam photoelectric sensor, PRK retro-reflective photoelectric sensor and FRK reflection light scanner) were designed for use in explosive gas atmospheres of group II, subgroup IIC (according to EU Directive 94/9/EC, corresponds to device group II, device category 2G, zone 1) and for non-conductive dusts (subgroup IIIB) in compliance with standards EN 60079-0:2012 + A11:2013 and EN 60079-11:2012.

The intrinsic safety of the sensors is ensured only in combination with corresponding electrical equipment according to IEC 60947-5-6 (NAMUR), e.g. isolated switching amplifier VS 403.



Notes!

- An isolated switching amplifier must be used for each sensor. In the case of the throughbeam photoelectric sensor, an isolated switching amplifier is required for both the transmitter and the receiver.
- The sensors must not be connected together at an isolated switching amplifier.
- When using an isolated switching amplifier, it must be ensured that the characteristic data specific to explosion protection of both devices are not exceeded.

Installation, Commissioning



Attention!

- Due to the physical circumstances, the photoelectric sensors of the 92 Ex series must not be used for the protection of persons or for purposes of emergency shutdown.
- The photoelectric sensors of the 92 Ex series must only be installed and maintained by trained electricians.
- The respective applicable national regulations for the installation of electrical equipment in potentially explosive areas must be observed.

During installation and commissioning of the devices, the EC type examination certificate DMT 03 ATEX E 029 is to be observed.

To connect the intrinsically safe sensors with corresponding equipment, it is possible to use, for example, the blue interconnection cable

KB-092-5000-4 Ex (angular connector, part no. 50113399) or KB-092-5000-4A Ex (axial connector, part no. 50113400) from Leuze electronic GmbH + Co. KG.

Maintenance

No changes may be made to the devices of the 92 Ex series for potentially explosive areas.

Repairs to the sensors may only be performed by persons trained for such work or by the manufacturer.

Defective devices must be replaced immediately.

Cyclical maintenance of the sensors is not necessary.

Depending on the environmental conditions, it may occasionally be necessary to clean the light-emission surfaces of the sensors.

This cleaning must only be performed by persons trained for performing this task.

Chemical resistance

The 92 Ex series sensors demonstrate good resistance against many diluted acids and bases.

Exposure to organic solvents is possible only under certain circumstances and only for short periods of time.

Resistance to chemicals should be examined on a case by case basis.

