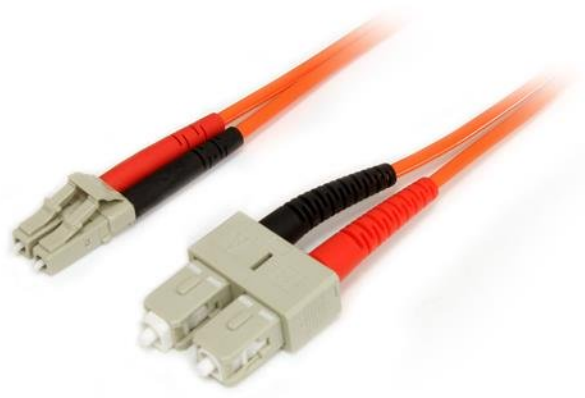


Fiber Optic Cable - Multimode Duplex 50/125 - LSZH - LC/SC - 1 m

Product ID: 50FIBLCSC1



The 50FIBLCSC1 1m LSZH LC to SC Fiber Cable features 50/125 micron fiber for high-speed, high bandwidth data transmissions over Gigabit Ethernet and Fiber Channel networks, with support for duplex multimode applications.

This LC-SC patch cable is housed in a LSZH (Low-Smoke, Zero-Halogen) flame retardant jacket, to ensure minimal smoke, toxicity and corrosion when exposed to high sources of heat, in the event of a fire. Making it ideal for use in industrial settings, central offices and schools, as well as residential settings where building codes are a consideration.

Each Duplex 50/125 (OM2) Multimode Fiber Patch Cable is individually tested and certified to be within acceptable optical insertion loss limits for guaranteed compatibility and 100% reliability and is backed by our lifetime warranty.

Certifications, Reports and Compatibility



Applications

- Ideal solution for data applications requiring high speed data transmission
- Broadband systems
- Telecommunication / Data communication
- Used by long distance networks with mission critical data

Features

- Immune to electrical interference
- OM2 (50/125) 500MHz multimode fiber
- LSZH (Low-Smoke, Zero-Halogen) cable jacket
- Attenuation loss meets or exceeds industry standards

Hardware	Warranty	Lifetime
	Fiber Size	50/125
	Fire Rating	LSZH Rated (Low Smoke Zero Halogen)
Performance	Cable Rating	1Gbps / 10Gbps
	Fiber Classification	OM2
	Maximum Data Transfer Rate	10Gbps
	Type	Multi Mode
Connector(s)	Connector A	1 - Fiber Optic LC Duplex Male
	Connector B	1 - Fiber Optic SC Duplex Male
Environmental	Humidity	0~90% RH
	Operating Temperature	-20°C to 60°C (-4°F to 140°F)
	Storage Temperature	-20°C to 60°C (-4°F to 140°F)
Physical Characteristics	Cable Length	3.3 ft [1 m]
	Color	Orange
	Product Height	0.000
	Product Length	3.3 ft [1 m]
	Product Width	0.000
	Weight of Product	0.9 oz [26 g]
Packaging Information	Package Height	1 in [26 mm]
	Package Length	8.7 in [22 cm]
	Package Width	7.9 in [20 cm]
	Shipping (Package) Weight	1.2 oz [35 g]
What's in the Box	Included in Package	1 - 1m Multimode 50/125 Duplex Fiber Patch Cable LC - SC

Product appearance and specifications are subject to change without notice.