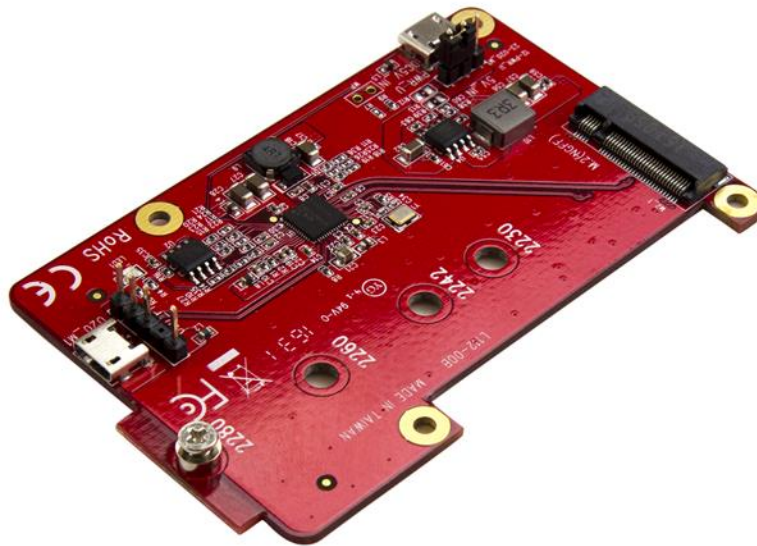


USB to M.2 SATA Converter for Raspberry Pi and Development Boards

Product ID: PIB2M21



Increase the data storage capacity of your Raspberry Pi or other development board, by connecting it directly to an M.2 NGFF SATA SSD. Perfect for custom projects and applications, this USB to M.2 SATA converter supports all models of Raspberry Pi as well as other development boards.

Add storage capacity to your development board

This convenient USB 2.0 to M.2 SATA converter lets you overcome data storage limitations of your development board by enabling you to connect an M.2 SATA drive through your board's USB-A port.

A convenient integrated solution

The USB to M.2 SATA converter integrates seamlessly with your existing development board. It's the perfect addition for development-board based applications such as surveillance, media players and servers, digital signage and IoT/automation solutions. It enables you to utilize your M.2 SATA drives with your dev board, and take advantage of the small form factor of M.2 SATA which makes it ideal for applications with space limitations.

Easy to install

Compatible with M.2 SATA drives (2230, 2242, 2260, and 2280), the converter is easy to install and doesn't require any device driver installation. It comes with a USB cable and all mounting accessories, including standoffs, so integrating it with your Raspberry Pi is fast and easy.

StarTech.com provides industry-leading support to get you up and running quickly. The PIB2M21 is backed by a StarTech.com 2-year warranty and free lifetime technical support.

Note:

This converter works with M.2 SATA SSDs only. To see which type of M.2 drive you have, simply look at the number of notches (or keys) on the drive end that connects with the M.2 socket. SATA-based M.2 drives have two notches (an M key and a B key), while PCIe-based M.2 drives have just one notch (an M key).

Raspberry Pi is a trademark of the Raspberry Pi Foundation

Certifications, Reports and Compatibility



Applications

- Increase data storage for Raspberry Pi and other development boards to create custom applications
- Develop solutions for business applications such as surveillance, media applications such as news boards, simple servers to host a website or video, and IoT/automation solutions such as lighting and temperature control
- Create custom development-board based applications for home use

Features

- Add an M.2 SATA SSD drive to your Raspberry Pi development board to increase data storage
- M.2 SATA drives (including 2230, 2242, 2260 and 2280 drive heights)
- USB 2.0 with data transfer speeds up to 480Mbps
- OS independent with no device driver installation required
- Includes USB cable and mounting accessories for Raspberry Pi

Hardware	Warranty	2 Years
	Bus Type	USB 2.0
	Chipset ID	Renesas/NEC - μ PD720231A
	Compatible Drive Types	M.2 (SATA, B-Key, NGFF)
	Drive Size	22m - M.2 NGFF
	Interface	USB 2.0
	Number of Drives	1
	Supported Drive Height(s)	2230 2242 2260 2280
Performance	MTBF	5,839,751 hrs
	RAID	No
	Type and Rate	USB 2.0 - 480 Mbit/s SATA III (6 Gbps)
Connector(s)	Drive Connectors	1 - M.2 (SATA, B-Key, NGFF)
	Host Connectors	1 - USB Micro-B (5 pin)
	Other Interface(s)	1 - USB Micro-B (5 pin) (Power)
Indicators	LED Indicators	1 - Activity
Power	Power Source	USB-Powered
Environmental	Humidity	15% ~ 90% RH
	Operating Temperature	5°C to 50°C (41°F to 122°F)
	Storage Temperature	-25°C to 70°C (-13°F to 158°F)
Physical Characteristics	Color	Red
	Max Drive Height	3.1 in [80 mm]
	Product Height	0.4 in [1.1 cm]
	Product Length	3.5 in [88 mm]
	Product Width	2.2 in [56 mm]
	Weight of Product	0.7 oz [21 g]
Packaging Information	Package Height	1.2 in [30 mm]

	Package Length	6.7 in [17 cm]
	Package Width	5.6 in [14.2 cm]
	Shipping (Package) Weight	3.9 oz [110 g]
What's in the Box	Included in Package	1 - USB to M.2 SATA converter 1 - USB-A to Micro-B cable 1 - set of converter-mounting hardware 1 - set of drive-mounting hardware 1 - quick-start guide

Product appearance and specifications are subject to change without notice.