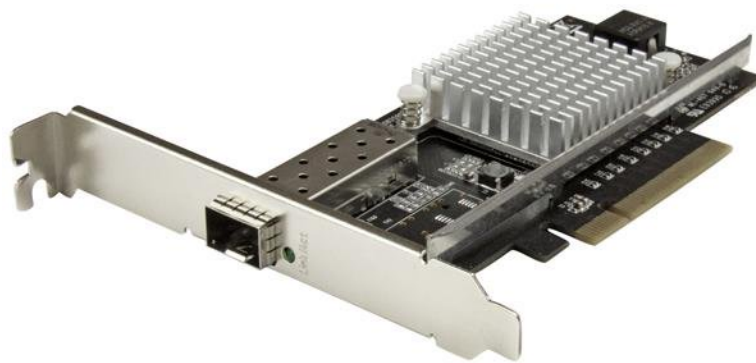


1-Port 10G Open SFP+ Network Card - PCIe - Intel Chip - MM/SM

Product ID: PEX10000SFPI



This fiber network card delivers reliable, high-performance network connectivity, by adding an open SFP+ slot to your server or high-powered workstation. It provides an easy and cost-effective way to upgrade your server or workstation to a 10 Gigabit fiber network using the SFP+ module of your choice and gives you the flexibility to use either multimode or single-mode fiber.

Increase your network speed

Several factors drive the need for more bandwidth in your network infrastructure. An increase in the number of network users and data-intensive applications, such as multimedia streaming and large file transfers all contribute to the need for more bandwidth in your network infrastructure. This fiber NIC lets you take advantage of the increased speed and stability of a 10 Gigabit network, with data transfers of up to 10Gbps.

Add scalable network connections to your server or workstation

The fiber NIC is compatible with most 10GbE SFP+ transceivers. This gives you flexible and scalable configuration options for connecting your computer directly to a fiber network, at greater distances.

The card features an open SFP+ slot with support for one interchangeable 10GBase SFP+ module. This gives you the option to use the fiber transceiver module that best suits your network needs based on distance and connector type. StarTech.com offers a variety of SFP+ transceiver modules including the SFP10GLRST [single-mode SFP+](#), the SFP10GLRMST [multi-mode SFP+](#), and SFP10GSRST [multimode LC with DDM](#).

In addition, StarTech.com provide a dependable solution for linking telecom and data communications equipment, such as routers and switches.

Enhance your network capabilities

The 10 Gigabit network card features the Intel® 82599 chipset, delivering the power, performance and enhanced capabilities you need for reliable network connections to your server or computer. The Intel chip offers many advanced features including Intel® Virtualization Technology for Connectivity, PXE network boot support and up to 15K jumbo frame support.

The PEX10000SFPI is backed by a StarTech.com 2-year warranty and free lifetime technical support.

Certifications, Reports and Compatibility



Applications

- Add 10Gbps network connectivity to file or application servers and high-performance workstations
- Transmit full 10 Gigabit network speeds to a remote terminal over longer distances than copper cabling
- Supports secure setups - a direct fiber connection means no electronic interference, which can be a problem with RJ45 network cards
- Upgrade your onboard network adapter to 10 Gigabit SFP+, for faster communication
- Create a video / audio editing console with 10Gbps access to network storage
- Ideal for remote embedded industrial monitoring systems, and high-speed video surveillance

Features

- Add a 10GbE SFP+ slot to your server or workstation for fast, high bandwidth connectivity, compatible with SR or LR transceivers
- Compatible with multimode or single-mode fiber
- Intel 82599 chipset with Intel Virtualization Technology for Connectivity
- PXE network boot support
- Compliant with IEEE 802.3ae (10GBASE-LR/SR only) and IEEE 802.3aq (10GBASE-LRM)
- Compliant with PCI Express Rev 2.0 specification, using PCIe x8 (or higher) slot
- Up to 15K jumbo frame support

Hardware	Warranty	2 Years
	Bus Type	PCI Express
	Card Type	Standard Profile (LP bracket incl.)
	Chipset ID	Intel - 82599
	Industry Standards	IEEE 802.3ae (10GBASE-LR/SR only), IEEE 802.3aq (10GBASE-LRM) PCI Express Rev 2.0, using PCIe x8 (or higher) slot
	Interface	Fiber (10 Gigabit Ethernet)
	Ports	1
Performance	Compatible Networks	10 Gbps
	Full Duplex Support	Yes
	Jumbo Frame Support	9K max.
	Maximum Data Transfer Rate	10 Gbps
	Promiscuous Mode	Yes
	Supported Protocols	IEEE 802.3ad (Link Aggregation) IEEE 802.3x (Flow Control Support) IEEE 802.1Q (VLAN tagging)
Connector(s)	Connector Type(s)	1 - PCI Express x8 Male
	Internal Ports	1 - SFP+ Slot Female
Software	OS Compatibility	Windows® 7, 8, 8.1, 10 Windows Server® 2008 R2, 2012, 2012 R2, 2016, 2019 (Windows Drivers are supported in 64-bit only) Linux 2.6.24 to 4.11.x <i>LTS Versions only</i>
Environmental	Humidity	20% ~ 80% RH
	Operating Temperature	5°C to 50°C (41°F to 122°F)
	Storage Temperature	-20°C to 60°C (-4°F to 140°F)
Physical Characteristics	Color	Black
	Product Height	4.7 in [12 cm]
	Product Length	5.3 in [13.5 cm]
	Product Width	0.7 in [18 mm]
	Weight of Product	3.6 oz [102 g]
Packaging Information	Package Height	1.3 in [32 mm]
	Package Length	6.8 in [17.2 cm]

	Package Width	5.6 in [14.2 cm]
	Shipping (Package) Weight	6.3 oz [178 g]
What's in the Box	Included in Package	1 - 10G open SFP+ fiber network card 1 - low-profile bracket 1 - quick-start guide

Product appearance and specifications are subject to change without notice.