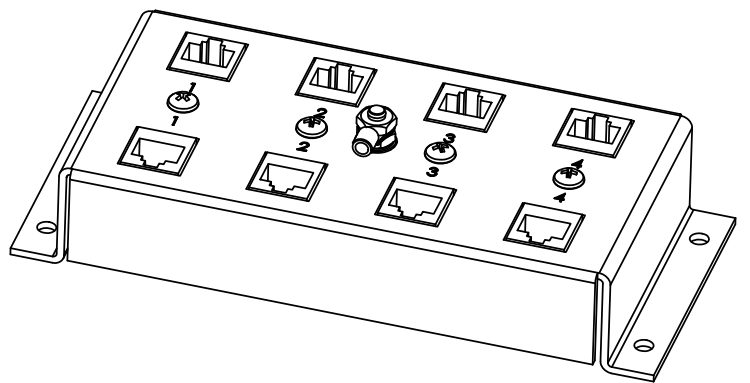
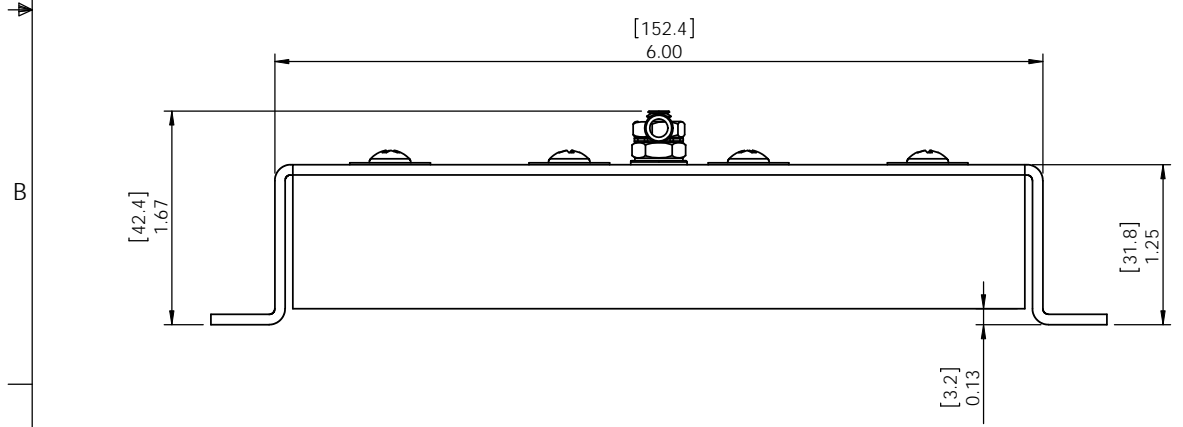
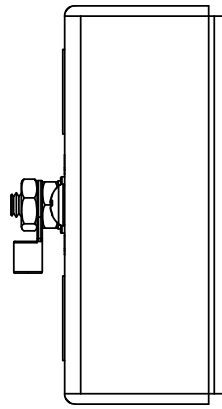
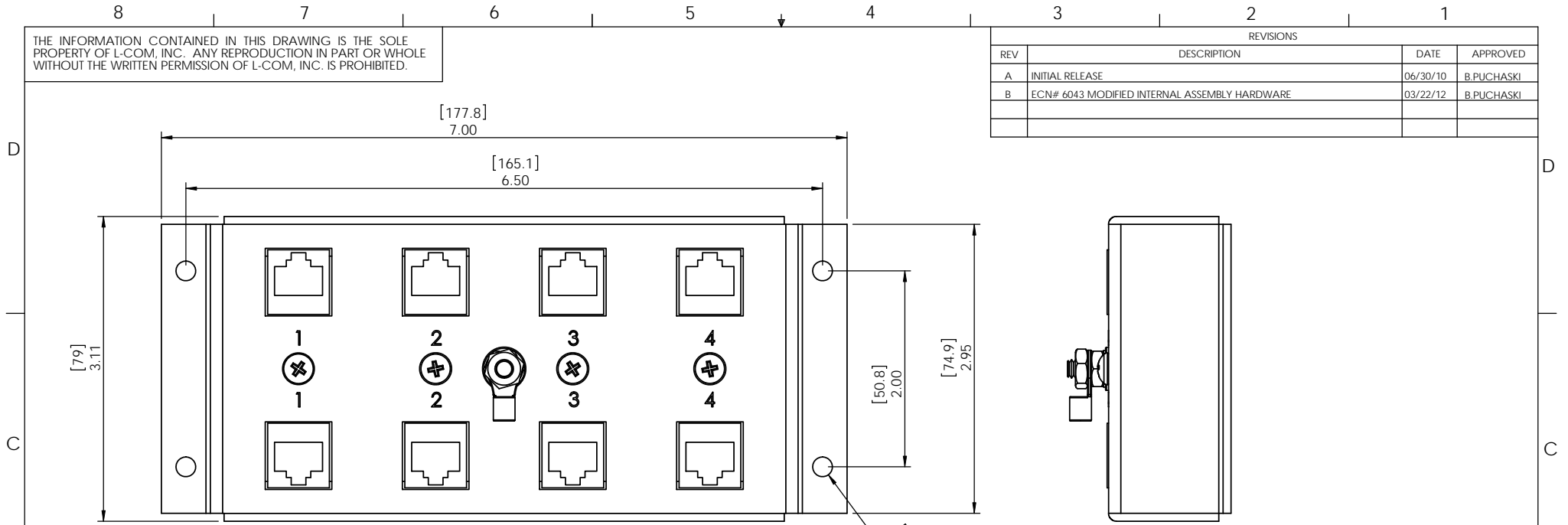


THE INFORMATION CONTAINED IN THIS DRAWING IS THE SOLE PROPERTY OF L-COM, INC. ANY REPRODUCTION IN PART OR WHOLE WITHOUT THE WRITTEN PERMISSION OF L-COM, INC. IS PROHIBITED.

REVISIONS			
REV	DESCRIPTION	DATE	APPROVED
A	INITIAL RELEASE	06/30/10	B.PUCHASKI
B	ECN# 6043 MODIFIED INTERNAL ASSEMBLY HARDWARE	03/22/12	B.PUCHASKI



RoHS Compliant ✓

NOTE:
1- COMPONENTS SHALL BE INDIVIDUALLY PACKAGED
IN ACCORDANCE WITH L-COM SPECIFICATION PKG-00012

UNLESS OTHERWISE SPECIFIED, DIMENSIONS ARE IN INCHES [mm] DIMENSIONAL TOLERANCES: .X = ±.1 .XX = ±.01 .XXX = ±.005 ANGULAR TOLERANCES: ALL = ± 1° PROJECTION	APPROVALS B.PUCHASKI	DATE 06/30/10		45 BEECHWOOD DRIVE NORTH ANDOVER, MA 01845	
	CHECKED BY K.BURGNER	06/30/10			CATEGORY LIGHTNING PROTECTORS
	APPROVED BY K.BURGNER	06/30/10	PRODUCT DESCRIPTION 4-PORT CAT6 INDOOR LIGHTNING PROTECTOR		
	COLOR VARIATIONS MAY OCCUR	SIZE A	FSCM NO. 43321	DWG. NO. CMSP-CAT6-4	REV. B
SCALE: NONE		CAD FILE: CMSP-CAT6-4.SLDRW		SHEET 1 OF 1	