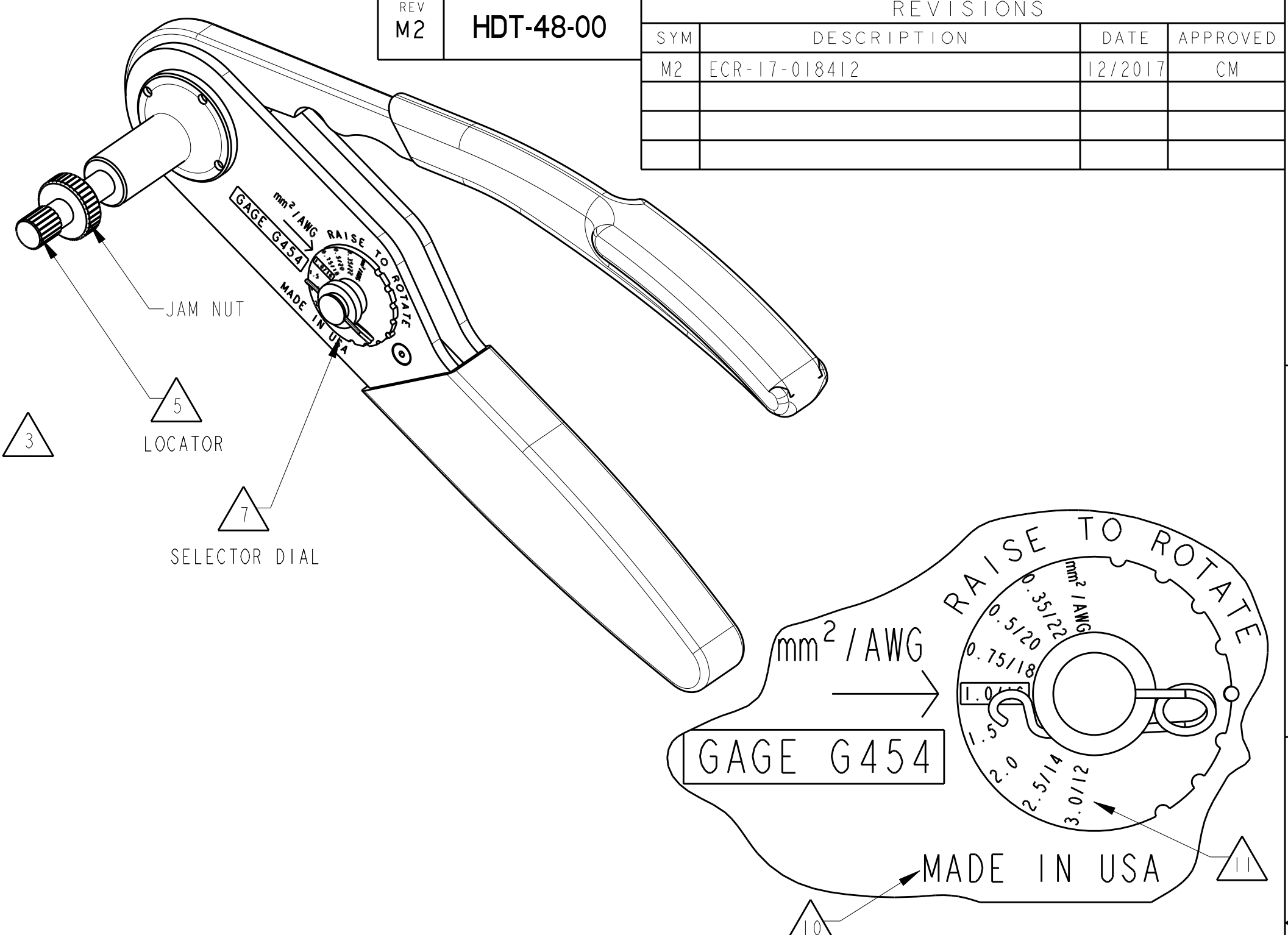


SOLID CONTACT PART NUMBER <sup>△6</sup>	SIZE TYPE	WIRE SIZE AWG [mm <sup>2</sup> ]	REF. ONLY CRIMP TENSILE LBS [N]	RECOMMENDED STRIP LENGTH INCH [mm]	CONTACT IDENTIFICATION INFO & NOTES
0460-204-12** 0460-211-12** 0460-220-12** 0460-235-12** 0460-258-12** 0462-203-12** 0462-210-12** 0462-214-12** 0462-215-12**	12 PIN 12 PIN 12 PIN 12 PIN 12 PIN 12 SOC 12 SOC 12 SOC 12 SOC	12 AWG 3.0 mm <sup>2</sup> 2.5 mm <sup>2</sup> 14 AWG 2.0 mm <sup>2</sup>	75 [334]	.222-.284 [5.64-7.21]	0462-215-12** MARKING 1 GRAY BAND, NARROW 1 BROWN BAND, NARROW 1 BROWN BAND, BROAD
0460-256-12**	12 PIN	1.5 mm <sup>2</sup> 16 AWG 1.0 mm <sup>2</sup> 18 AWG 0.75 mm <sup>2</sup>	35 [156]	.222-.284 [5.64-7.21]	
0460-215-16** 0462-209-16**	16 PIN 16 SOC	14 AWG 2.0 mm <sup>2</sup>	70 [311]	.250-.312 [6.35-7.92]	1 GREEN BAND, BROAD 1 GREEN BAND, BROAD
0460-002-16** 0460-202-16** 0460-211-16** 0460-230-16** 0460-235-16** 0460-247-16** 2325529-1 0462-004-16** 0462-007-16** 0462-201-16** 0462-214-16** 0462-221-16** 0462-222-16** 2325584-1	16 PIN 16 PIN 16 PIN 16 PIN 16 PIN 16 PIN 16 PIN 16 SOC 16 SOC 16 SOC 16 SOC 16 SOC 16 SOC 16 SOC	1.5 mm <sup>2</sup> 16 AWG 1.0 mm <sup>2</sup> 18 AWG 0.75 mm <sup>2</sup> 20 AWG 0.50 mm <sup>2</sup>	35 [156]	.250-.312 [6.35-7.92]	2325529-1 MARKING 3 BROWN BANDS 2325584-1 MARKING 2 BROWN BANDS 1 BLUE BAND 0460-002-1631 AND 0462-004-1631 MARKING 1 BLUE BAND, BROAD
0462-001-16**	16 SOC	16 AWG 1.0 mm <sup>2</sup>	35 [156]	.250-.312 [6.35-7.92]	1 BLUE BAND, NARROW
0462-223-16**	16 SOC	1.5 mm <sup>2</sup> 16 AWG 1.0 mm <sup>2</sup>	35 [156]	.117-.237 [4.49-6.02]	USE 2.0 mm <sup>2</sup> DIAL SET
0460-010-20** 0462-005-20**	20 PIN 20 SOC	16 AWG 1.00 mm <sup>2</sup> 18 AWG 0.75 mm <sup>2</sup>	20 [ 89]	.156-.218 [3.96-5.54]	1 PURPLE BAND, BROAD
2325531-1 0460-202-20** 0462-201-20** 2325530-1	20 PIN 20 PIN 20 SOC 20 SOC	20 AWG 0.50 mm <sup>2</sup> 22 AWG 0.35 mm <sup>2</sup>	20 [ 89] 10 [44]	.156-.218 [3.96-5.54]	2325531-1 MARKING 2 BROWN BANDS 1 BLACK BAND 2325530-1 MARKING 2 BROWN BANDS 1 GREEN BAND
112349 112352	12 PIN 12 SOC	12 AWG 3.0 mm <sup>2</sup> 2.5 mm <sup>2</sup> 14 AWG 2.0 mm <sup>2</sup>	75 [334] 70 [311]	.222-.284 [5.64-7.21]	SLOTTED (SPLIT) PIN <sup>△3</sup> <sup>△4</sup>
0460-201-1690 0461-201-1690	16 PIN 16 SOC	1.5 mm <sup>2</sup> 16 AWG 1.0 mm <sup>2</sup> 18 AWG 0.75 mm <sup>2</sup>	35 [156] 25 [111]	.222-.284 [5.64-7.21]	SLOTTED (SPLIT) PIN
8960-025-12603 8962-014-12603	12 PIN 12 SOC	4.0 mm <sup>2</sup> 12 AWG 3.0 mm <sup>2</sup> 2.5 mm <sup>2</sup>	75 [334]	.222-.284 [5.64-7.21]	<sup>△11</sup>
8960-020-16603 8962-011-16603	16 PIN 16 SOC	1.5 mm <sup>2</sup> 16 AWG 1.0 mm <sup>2</sup> 18 AWG 0.75 mm <sup>2</sup> 20 AWG 0.50 mm <sup>2</sup>	35 [156] 25 [111] 20 [89]	.250-.312 [6.35-7.92]	



REV M2	HDT-48-00	REVISIONS		
SYM	DESCRIPTION	DATE	APPROVED	
M2	ECR-17-018412	12/2017	CM	

SOLID CONTACT PART NUMBER <sup>△6</sup>	SIZE TYPE	WIRE SIZE AWG [mm <sup>2</sup> ]	REF. ONLY CRIMP TENSILE LBS [N]	RECOMMENDED STRIP LENGTH INCH [mm]	CONTACT IDENTIFICATION INFO & NOTES
4060-002-12** 4062-002-12**	12 PIN 12 SOC	12 AWG 3.0 mm <sup>2</sup> 2.5 mm <sup>2</sup> 14 AWG 2.0 mm <sup>2</sup>	75 [334] 70 [311]	.250-.312 [6.35-7.92]	<sup>△3</sup> <sup>△4</sup>
4060-001-16** 4062-001-16**	16 PIN 16 SOC	1.5 mm <sup>2</sup> 16 AWG 1.0 mm <sup>2</sup> 18 AWG 0.75 mm <sup>2</sup>	35 [156] 25 [111]	.240-.302 [6.10-7.67]	

- <sup>△1</sup> USE 3.0/12 SETTING FOR THIS PART WITH 4.0mm<sup>2</sup>.
- <sup>△10</sup> COUNTRY OF ORIGIN "MADE IN USA" SHOWN AS EXAMPLE.
- 9. SEE 0425-071-0000 INSTRUCTION GUIDE, SHIPPED WITH TOOL.
- 8. OVERALL TOOL LENGTH IS APPROXIMATELY 9.90 [251.46].
- <sup>△7</sup> CYCLE TOOL TO OPEN HANDLES. REMOVE LOCK CLIP. RAISE AND ROTATE DIAL TO SELECT WIRE SIZE. REPLACE LOCK CLIP.
- <sup>△6</sup> WHEN \*\*= 31, PLATING IS GOLD.  
WHEN \*\*=141, PLATING IS NICKEL.

<sup>△5</sup> DEPTH ADJUSTING SCREW P/N 0426-209-0000 INCLUDES JAM NUT.  
<sup>△4</sup> USE 2.5/14 SETTING FOR THIS PART WITH 12 AWG.  
<sup>△3</sup> USE 1.5 SETTING FOR THIS PART WITH 14 AWG.  
<sup>△2</sup> CAUTION: NEVER CLOSE TOOL ON GAGE G454. CLOSE TOOL FIRST AND THEN INSERT GAGE.  
<sup>△1</sup> USE <sup>△</sup>GAGE G454 IN DIAL POSITION 1.0/16 TO CHECK WEAR ANNUALLY. CHECK OFTEN IF USED FOR FREQUENT CRIMPING.  
 NOTES: UNLESS OTHERWISE SPECIFIED

SIGNATURE & DATE		TOOL, HAND CRIMP FOR SIZE 20, 16 & 12 SOLID CONTACTS	EP	MATL. CODE	
DR	J. APOSTOL 21FEB2007		3850 INDUSTRIAL AVE. HEMET, CA 92545		
CHK		ENVELOPE	DEUTSCH INDUSTRIAL		
PE			C HDT-48-00		
APPD			DWG SIZE	CODE 4AFUB	SHEET   OF
SCALE NONE	WT				