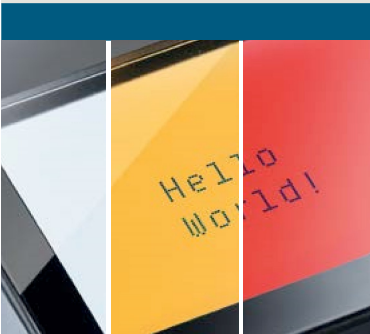




Remote communication via the cellular wireless network

- With the LOGO! CMR, a cell phone or tablet can receive status data and alarms from the LOGO! station via text message or email
- The user can configure text messages as plaintext (e.g. FAN_ON)
- Secure remote access via https or Open VPN in the mobile network allows configuration changes and diagnostics both on the web server of the LOGO! CMR and on LOGO! 8. The program can be uploaded and downloaded to and from LOGO! 8
- Position detection via GPS can be used, e.g. for cost-effective container tracking. The position is reported to the LOGO! basic module or passed on to a central office by text message or email
- Via LOGO! CMR, the clock time of the LOGO! 8 can be synchronized with an accessible NTP server, a GPS or a mobile wireless signal



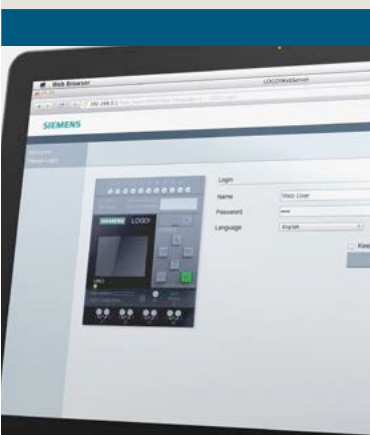
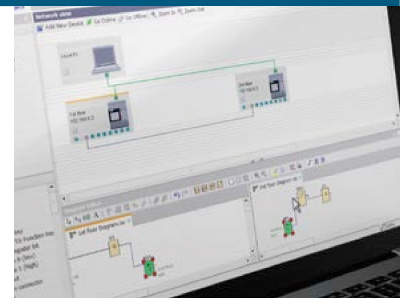
Text display

- LOGO! TDE with two Ethernet interfaces
- The Ethernet connection can bridge a distance of over ten meters between LOGO! TDE and LOGO! 8
- Large display with six lines and 20 characters per line for informative messages in plaintext
- As with the LOGO! display, the TDE offers selectable white, orange, and red backlighting for optical highlighting



Software quite simple – LOGO! Soft Comfort

- Familiar, easy operation in single mode and incredibly simple configuration in network mode
- Three programs can be displayed side-by-side; drag and drop can be used to easily drag signals from one program to another
- Smooth migration of programs from previous versions
- LOGO! Access Tool for direct transfer of process values into an Excel table during operation
- LOGO! Web Editor (LWE) for the design of application specific webpages (without HTML knowledge)



The new module for building automation with KNX

- With the LOGO! CMK2000 communication module, the LOGO! 8 can be implemented as an intelligent controller in the KNX system
- LOGO! is easy to connect to CMK2000 via Ethernet, which means the complete LOGO! hardware configuration can be used for KNX
- Up to 50 communication objects can be configured via KNX, independent of the input and output points – meaning more flexibility for your project
- Autonomous processing of user programs, independent of KNX, evaluation of KNX and industrial sensors and control of KNX actuators
- Time and date synchronization as master or slave in networked systems



Ordering data

Designation	Description	Digital inputs	Digital outputs	Analog inputs	Outputs	Article No.
	Power supply					
LOGO! 8 basic units						
LOGO! 8 Basic with 6-line LCD display and cursor keys, Ethernet interface						
LOGO! 24 CE	24 V DC	8, of which 4 can be used as AI (0...10 V)	4	Up to 4 (0...10 V)	0.3 A transistor	6ED1052-1CC08-0BA0
LOGO! 12/24 RCE	12...24 V DC	8, of which 4 can be used as AI (0...10 V)	4	Up to 4 (0...10 V)	10 A relay	6ED1052-1MD08-0BA0
LOGO! 24 RCE	24 V AC/DC	8	4	–	10 A relay	6ED1052-1HB08-0BA0
LOGO! 230 RCE	115...230 V AC/DC	8	4	–	10 A relay	6ED1052-1FB08-0BA0



Ordering data

Designation	Description	Digital inputs	Digital outputs	Analog inputs	Outputs	Article No.
	Power supply					
LOGO! 8 basic units						
LOGO! 8 Pure without LCD display and without cursor keys, Ethernet interface						
LOGO! 24 CEo	24 V DC	8, of which 4 can be used as AI (0...10 V)	4	Up to 4 (0...10 V)	0.3 A transistor	6ED1052-2CC08-0BA0
LOGO! 12/24 RCEo	12...24 V DC	8, of which 4 can be used as AI (0...10 V)	4	Up to 4 (0...10 V)	10 A relay	6ED1052-2MD08-0BA0
LOGO! 24 RCEo	24 V AC/DC	8	4	–	10 A relay	6ED1052-2HB08-0BA0
LOGO! 230 RCEo	115...230 V AC/DC	8	4	–	10 A relay	6ED1052-2FB08-0BA0

Ordering data

	Operating range	SIPLUS Article No.	Based on Article No.
LOGO! 8 SIPLUS basic devices			
SIPLUS LOGO! 24 CE	–20...+60 °C Start-up temperature 0 °C with conformal coating	6AG1052-1CC01-7BA8	6ED1052-1CC01-0BA8
SIPLUS LOGO! 12/24 RCE		6AG1052-1MD00-7BA8	6ED1052-1MD00-0BA8
SIPLUS LOGO! 24 RCE		6AG1052-1HB00-7BA8	6ED1052-1HB00-0BA8
SIPLUS LOGO! 230 RCE		6AG1052-1FB00-7BA8	6ED1052-1FB00-0BA8

Ordering data

Designation	Description	Article No.
LOGO! 8 Starter Kits		
	In Tanos Box with: LOGO! 8, LOGO! Soft Comfort V8, WinCC Basic, Ethernet cable	
LOGO! 8 12/24 V Starter Kit	LOGO! 12/24 RCE, LOGO!Power 24 V, 1.3 A	6ED1057-3BA01-0AA8
LOGO! 8 230 V Starter Kit	LOGO! 230 RCE	6ED1057-3BA03-0AA8
LOGO! 8 TDE Starter Kit	LOGO! 12/24 RCEo, LOGO!Power 24 V, 1.3 A, LOGO! TDE	6ED1057-3BA11-0AA8
LOGO! 8 12/24 V + KP300 Basic Starter Kit	LOGO! 12/24 RCE, LOGO!Power 24 V, 1.3 A, SIMATIC HMI KP300 Basic mono PN	6AV2132-0HA00-0AA1
LOGO! 8 12/24 V + KTP400 Basic Starter Kit	LOGO! 12/24 RCE, LOGO!Power 24 V, 1.3 A, SIMATIC HMI KTP400 Basic	6AV2132-0KA00-0AA1
LOGO! 8 12/24 V + KTP700 Basic Starter Kit	LOGO! 12/24 RCE, LOGO!Power 24 V, 1.3 A, SIMATIC HMI KTP700 Basic	6AV2132-3GB00-0AA1



Heribert Heitmeier, trout farmer from Paderborn / North-Rhine Westphalia, Germany, and LOGO! fan

Heribert Heitmeier counts on LOGO! to monitor the oxygen content of his fish ponds and water aerator and control the automatic feeding equipment.



Daniel Miehling, homeowner and LOGO! fan

Daniel Miehling relies on LOGO! for convenience and safety in the home, from the automatic control of blinds and lights to presence simulation.