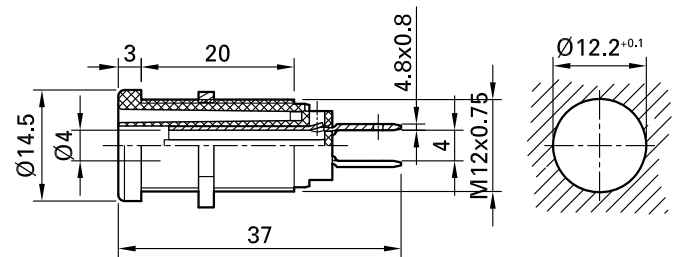


XEB-1R



Item number 66.9131-*

Insulated, rigid, \varnothing 4 mm, accepting spring-loaded \varnothing 4 mm plugs with rigid insulating sleeve. Brass sheet. The socket consists of two insulated, semi-circular contacts, which are connected to each other when a plug is inserted (switch function). The socket is screwed into pre-drilled panels of plastic, metal, etc.

Connection: 2x Flat connecting tab 4.8 mm \times 0.8 mm.

Technical data	
Diameter of plug system	4 mm
Rated Values	1000 V, CAT IV, 20 A
Surface treatment electrical contact	Ni
Base material electrical contact	CuZn
Colours *	20 21 22 23 24 25 26
Thread	GEW.12-MUTTER
Test accessory acc. to	IEC EN 61010-2-030
Supplied assembly material	GEW.12-MUTTER
Approvals	UR
Remarks	Accessories: Flat connecting receptacle FSH4,8x0,8; Tube spanner SS2; Tube spanner SS425