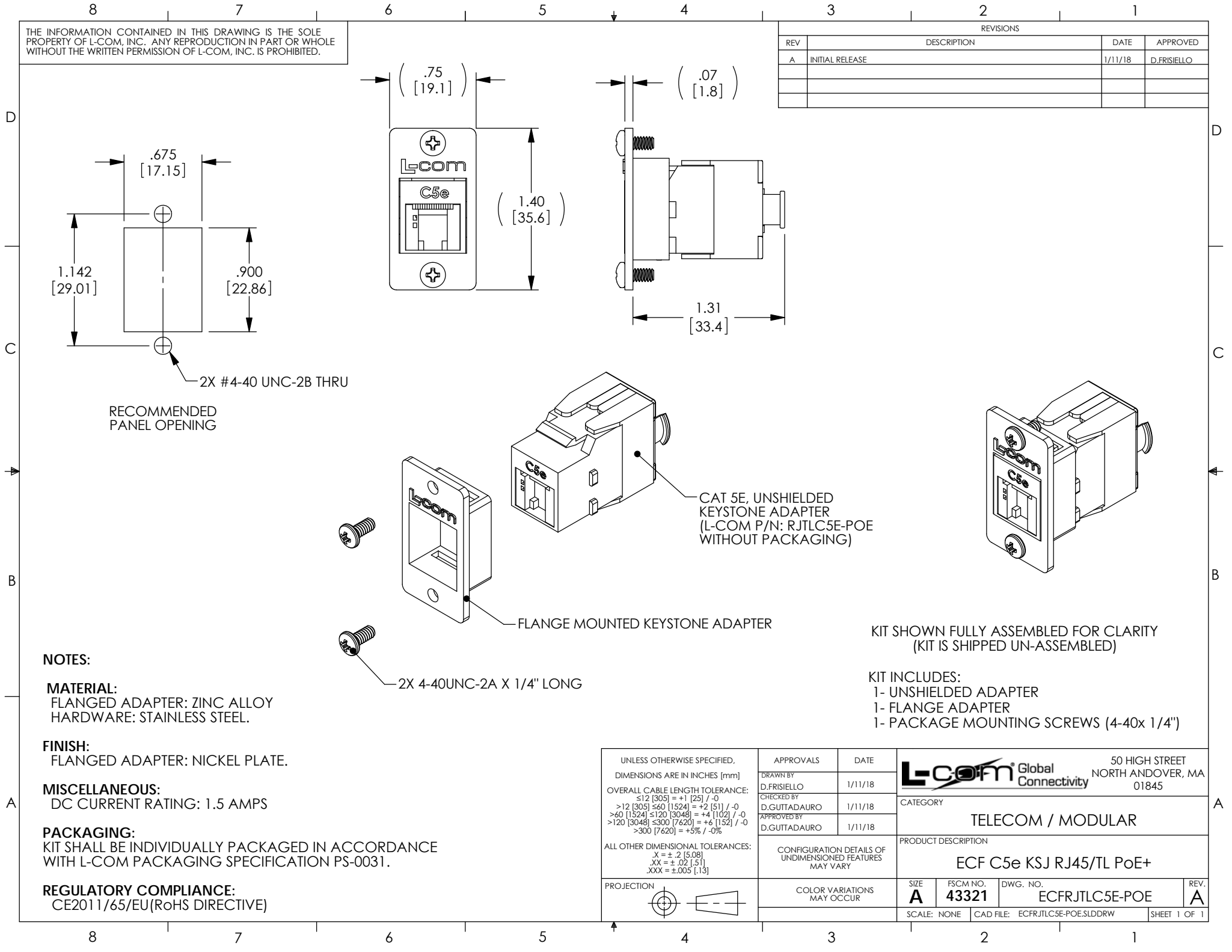


THE INFORMATION CONTAINED IN THIS DRAWING IS THE SOLE PROPERTY OF L-COM, INC. ANY REPRODUCTION IN PART OR WHOLE WITHOUT THE WRITTEN PERMISSION OF L-COM, INC. IS PROHIBITED.

REVISIONS			
REV	DESCRIPTION	DATE	APPROVED
A	INITIAL RELEASE	1/11/18	D.FRISIELLO



RECOMMENDED
PANEL OPENING

2X #4-40 UNC-2B THRU

CAT 5E, UNSHIELDED
KEYSTONE ADAPTER
(L-COM P/N: RJTLC5E-POE
WITHOUT PACKAGING)

FLANGE MOUNTED KEYSTONE ADAPTER

2X 4-40UNC-2A X 1/4" LONG

KIT SHOWN FULLY ASSEMBLED FOR CLARITY
(KIT IS SHIPPED UN-ASSEMBLED)

KIT INCLUDES:
1- UNSHIELDED ADAPTER
1- FLANGE ADAPTER
1- PACKAGE MOUNTING SCREWS (4-40x 1/4")

NOTES:
MATERIAL:
FLANGED ADAPTER: ZINC ALLOY
HARDWARE: STAINLESS STEEL.
FINISH:
FLANGED ADAPTER: NICKEL PLATE.
MISCELLANEOUS:
DC CURRENT RATING: 1.5 AMPS
PACKAGING:
KIT SHALL BE INDIVIDUALLY PACKAGED IN ACCORDANCE
WITH L-COM PACKAGING SPECIFICATION PS-0031.
REGULATORY COMPLIANCE:
CE2011/65/EU(RoHS DIRECTIVE)

UNLESS OTHERWISE SPECIFIED, DIMENSIONS ARE IN INCHES [mm] OVERALL CABLE LENGTH TOLERANCE: ≤12 [305] = +1 [25] / -0 >12 [305] ≤60 [1524] = +2 [51] / -0 >60 [1524] ≤120 [3048] = +4 [102] / -0 >120 [3048] ≤300 [7620] = +6 [152] / -0 >300 [7620] = +5% / -0% ALL OTHER DIMENSIONAL TOLERANCES: .X = ± .2 [5.08] .XX = ± .02 [51] .XXX = ±.005 [1.27]	APPROVALS D.FRISIELLO	DATE 1/11/18			50 HIGH STREET NORTH ANDOVER, MA 01845	
	CHECKED BY D.GUITADAURO	1/11/18	CATEGORY TELECOM / MODULAR		PRODUCT DESCRIPTION ECF C5e KSJ RJ45/TL PoE+	
	APPROVED BY D.GUITADAURO	1/11/18	SIZE A	FSCM NO. 43321		DWG. NO. ECFRJTLC5E-POE
	PROJECTION 	COLOR VARIATIONS MAY OCCUR		SCALE: NONE	CAD FILE: ECFRJTL5E-POE.SLDDRW	SHEET 1 OF 1