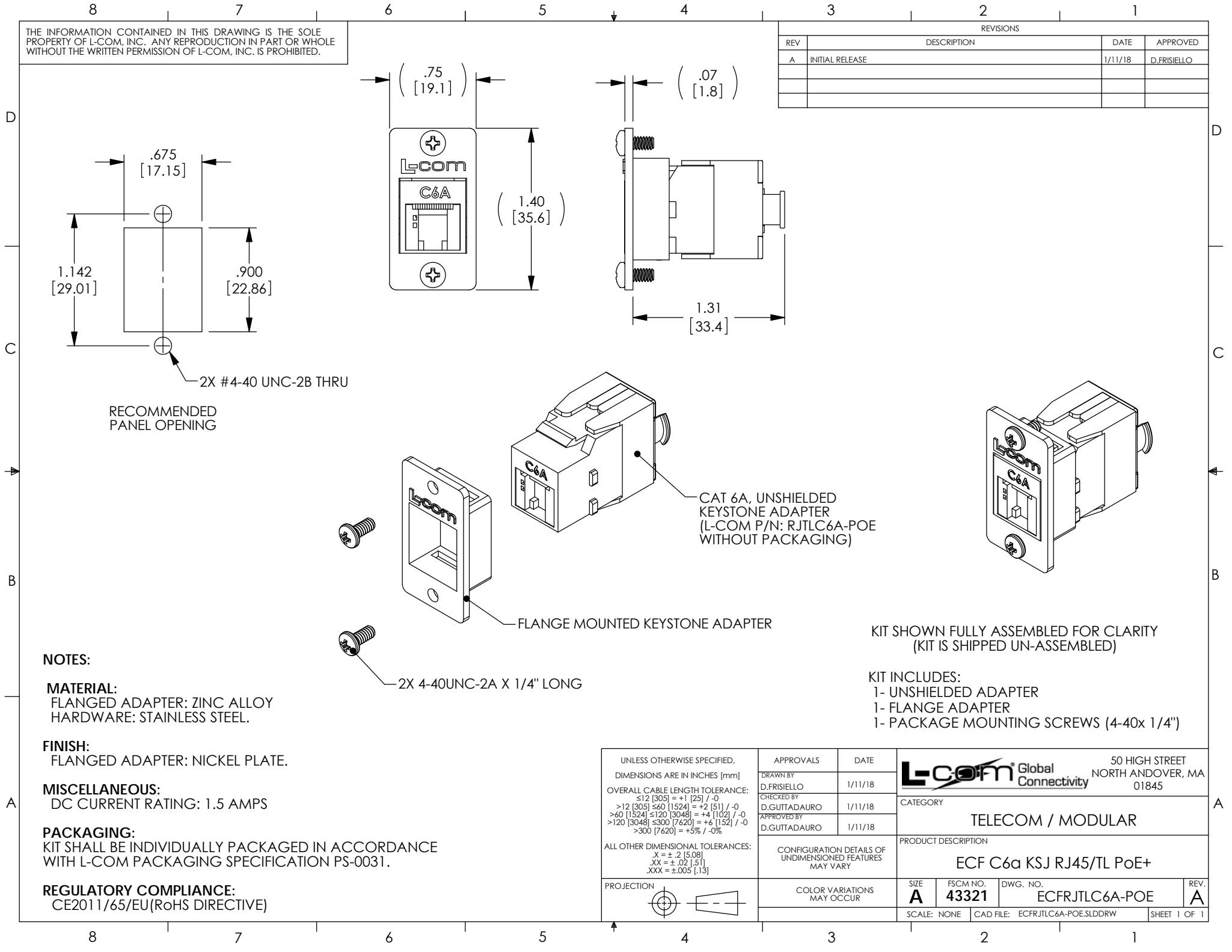


THE INFORMATION CONTAINED IN THIS DRAWING IS THE SOLE PROPERTY OF L-COM, INC. ANY REPRODUCTION IN PART OR WHOLE WITHOUT THE WRITTEN PERMISSION OF L-COM, INC. IS PROHIBITED.

REVISIONS			
REV	DESCRIPTION	DATE	APPROVED
A	INITIAL RELEASE	1/11/18	D.FRISIELLO



RECOMMENDED  
PANEL OPENING

2X #4-40 UNC-2B THRU

CAT 6A, UNSHIELDED  
KEYSTONE ADAPTER  
(L-COM P/N: RJTLC6A-POE  
WITHOUT PACKAGING)

FLANGE MOUNTED KEYSTONE ADAPTER

2X 4-40UNC-2A X 1/4" LONG

KIT SHOWN FULLY ASSEMBLED FOR CLARITY  
(KIT IS SHIPPED UN-ASSEMBLED)

KIT INCLUDES:  
1- UNSHIELDED ADAPTER  
1- FLANGE ADAPTER  
1- PACKAGE MOUNTING SCREWS (4-40x 1/4")

**NOTES:**

**MATERIAL:**  
FLANGED ADAPTER: ZINC ALLOY  
HARDWARE: STAINLESS STEEL.

**FINISH:**  
FLANGED ADAPTER: NICKEL PLATE.

**MISCELLANEOUS:**  
DC CURRENT RATING: 1.5 AMPS

**PACKAGING:**  
KIT SHALL BE INDIVIDUALLY PACKAGED IN ACCORDANCE WITH L-COM PACKAGING SPECIFICATION PS-0031.

**REGULATORY COMPLIANCE:**  
CE2011/65/EU(RoHS DIRECTIVE)

UNLESS OTHERWISE SPECIFIED, DIMENSIONS ARE IN INCHES [mm] OVERALL CABLE LENGTH TOLERANCE: ≤12 [305] = +1 [25] / -0 >12 [305] ≤60 [1524] = +2 [51] / -0 >60 [1524] ≤120 [3048] = +4 [102] / -0 >120 [3048] ≤300 [7620] = +6 [152] / -0 >300 [7620] = +5% / -0% ALL OTHER DIMENSIONAL TOLERANCES: .X = ± .2 [5.08] .XX = ± .02 [51] .XXX = ±.005 [1.27]	APPROVALS D.FRISIELLO	DATE 1/11/18		50 HIGH STREET NORTH ANDOVER, MA 01845		
	CHECKED BY D.GUITADAURO	1/11/18		CATEGORY TELECOM / MODULAR		
	APPROVED BY D.GUITADAURO	1/11/18	PRODUCT DESCRIPTION ECF C6a KSJ RJ45/TL PoE+			
	PROJECTION 	COLOR VARIATIONS MAY OCCUR	SIZE <b>A</b>	FSCM NO. <b>43321</b>	DWG. NO. ECFRJTL6A-POE	REV. <b>A</b>
		SCALE: NONE	CAD FILE: ECFRJTLC6A-POE.SLDDRW		SHEET 1 OF 1	