

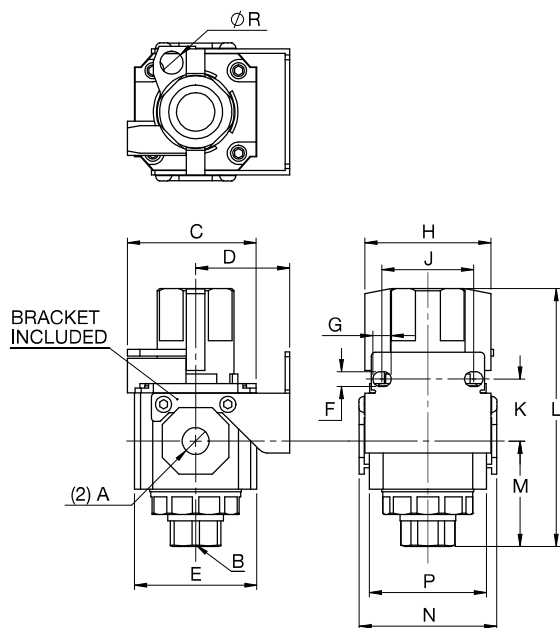
MGZ Series Relief Valves

Engineering Specifications

Model	MGZ
Fluid	Air (Clean/Dry)
Actuation	Manual
Valve Type	3 Port - 2 Position
Pressure Range	0 to 130 psi (0 to 0.9 MPa)
Proof Pressure	215 psi (1.5 MPa)
Temperature Range	-4 °F to 158 °F (-20 °C to 70 °C)
Material	Aluminum Alloy Body
Mounting	Individual Stamped Steel Bracket or Modular Connecting Kit
Knob Motion	90° Twist
Includes	Modular Connecting Kit / Stamped Steel Bracket / Lock and Key



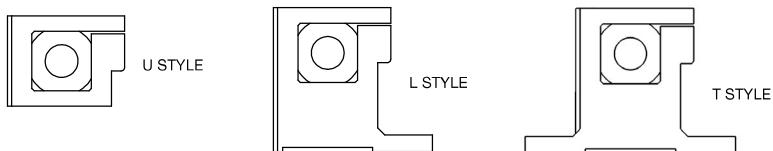
Dimensions (mm)



Model	A	B	C	D	E	F	G
MGZ200-06	1/8 NPT	1/4 NPT	42.5	30	40	5.5	8.5
MGZ200-08	1/4 NPT	1/4 NPT	42.5	30	40	5.5	8.5
MGZ300-08	1/4 NPT	3/8 NPT	56.5	41	53.4	6.5	8
MGZ300-10	3/8 NPT	3/8 NPT	56.5	41	53.4	6.5	8
MGZ400-15	1/2 NPT	1/2 NPT	66	50	64	8.5	11

Model	H	J	K	L	M	N	P	R
MGZ200-06	42	27	23	89	36.5	47	38	7.1
MGZ200-08	42	27	23	89	36.5	47	38	7.1
MGZ300-08	55	40	27	112.5	46	60	51	9.3
MGZ300-10	55	40	27	112.5	46	60	51	9.3
MGZ400-15	65	55	33.5	134	58.5	75	63	10.5

Modular Connecting Kit (included)



How to Order

MGZ series relief valve models can be configured using basic alphanumeric clusters. To create an MGZ series part number, choose model, port size, drain, and filtering. Sample MGZ series part numbers and available options are featured below.

MGZ 300 - 08 - T

Model		Port Size		Modular Connecting Kit ¹	
200	200 Series	06	1/8 NPT (200 Series)	T	T Style
300	300 Series	08	1/4 NPT (200, 300 Series)	L	L Style
400	400 Series	10	3/8 NPT (300 Series)	U	U Style
		15	1/2 NPT (400 Series)		

¹ All Pressure Relief Valves also include stamped bracket

