

## AZM415-11/11ZPKA-110VAC



- Long life
- Robust design
- Metal enclosure
- Ex version available
- Cut clamp termination
- 130 mm x 100 mm x 46,5 mm
- 2 cable entries M 20 x 1.5
- 2 switches in one enclosure
- Adjustable ball latch to 400 N
- Interlock with protection against incorrect locking.
- Problem-free opening of stressed doors by means of bell-crank system

### Data

#### Ordering data

Product type description	AZM 415-11/11ZPKA 110 VAC
Article number (order number)	101167207
EAN (European Article Number)	4030661218212
eCl@ss number, Version 9.0	27-27-26-03

#### Certifications

Certificates	CE cULus CCC EAC
--------------	---------------------------

#### General data

Product name	AZM 415
Standards	EN 60947-5-1 BG-GS-ET-19
Active principle	electromechanical
Enclosure material	Aluminium
Enclosure coating material	painted
Material of the contacts, electrical	Silver
Gross weight	905 g

## General data - Features

Power to lock	Yes
Number of actuating directions	1
Number of auxiliary contacts	2
Number of safety contacts	2
Number of guard doors	1

## Safety appraisal

Standards	ISO 13849-1
Mission Time	20 Year(s)

## Safety appraisal - Safety outputs

B10d Normally-closed contact (NC)	2,000,000 Operations
-----------------------------------	----------------------

## Mechanical data

Mechanical life, minimum	1,000,000 Operations
Clamping force in accordance with ISO14119 $F_{zh}$	3,500 N
Latching force, minimum	150 N
Latching force, maximum	400 N
positive break travel	5 mm
Positive break force, minimum	15 N
Actuating speed, maximum	0.2 m/s

## Mechanical data - Connection technique

Terminal Connector	Screw connection
Cable section, minimum	2 x 0.75 mm <sup>2</sup>
Cable section, maximum	2 x 2.5 mm <sup>2</sup>
Note (Cable section)	All indications about the cable section are including the conductor ferrules.

## Mechanical data - Dimensions

Height of sensor	100 mm
Length of sensor	46.5 mm
Width of sensor	130 mm

## Ambient conditions

Protection class	IP 67 to IEC/EN 60529
Ambient temperature, minimum	-25 °C
Ambient temperature, maximum	+50 °C

## Ambient conditions - Insulation value

Rated impulse withstand voltage 4 kV

## Electrical data

Thermal test current 6 A  
Rated control voltage 110 VAC  
Utilisation category AC-15 230 VAC  
Utilisation category AC-15 4 A  
Utilisation category DC-13 24 VDC  
Utilisation category DC-13 1 A  
Electrical power consumption, maximum 10 W  
Switching element NO contact, NC contact  
Switching principle Creep circuit element

## Other data

Note (applications) sliding safety guard  
hinged safety guard

## Ordering code

Product type description:

AZM 415-(1)(2)PK(3)-(4) (5)(6)-(7)

(1)

**11/11** 2 NC contacts/2 NO contacts  
**11/02** 3 NC contacts / 1 NO contacts  
**11/20** 1 NC contacts / 3 NO contacts  
**02/11** 3 NC contacts / 1 NO contacts  
**02/20** 2 NC contacts / 2 NO contacts  
**02/02** 4 NC contact

(2)

**X** Protection class IP54  
**Z** Protection class IP67

(3)

**without** Power to unlock  
**A** Power to lock

(4)

**STR** Connector M23 right

**ST** Connector M23 bottom

(5)

**without** Without manual release

**E** Manual release using triangular key

**F** with triangular key (secured with locking screw)

**FE** using triangular key

**RS** Manual release using key

**T** Emergency exit using latched pushbutton (power to unlock only)

**TE** Emergency exit using latched pushbutton and manual release, mounting outside (power to unlock only)

**TEI** Emergency exit using latched pushbutton and manual release, mounting inside (power to unlock only)

**NS** Emergency release using lock button

(6)

**24VAC/DC** Us: 24 VAC/DC

**110VAC** Us: 110 VAC

**230VAC** Us: 230 VAC

(7)

**1637** Gold-plated contacts

(1)

**A** Power to lock

(2)

**ST** Connector M23 right

**without** Power to unlock

**STR** Connector M23 bottom

(3)

**without** Without manual release

**E** Manual release using triangular key (only for power to unlock principle)

(4)

**1637** Gold-plated contacts

## Pictures

## Product picture (catalogue individual photo)



ID: kazm4f24

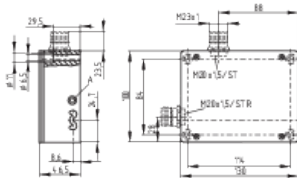
| 679,3 kB | .jpg | 352.778 x 277.636 mm - 1000 x 787  
Pixel - 72 dpi

| 83,7 kB | .jpg | 32 x 25.2 mm - 320 x 252 Pixel - 254  
dpi

| 42,3 kB | .png | 74.083 x 58.208 mm - 210 x 165  
Pixel - 72 dpi

## Dimensional drawing basic component

ID: 1azm4g01



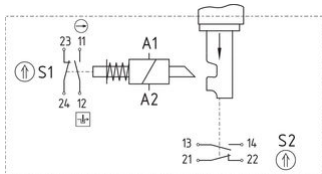
| 29,5 kB | .jpg | 112.889 x 78.317 mm - 320 x 222  
Pixel - 72 dpi

| 132,1 kB | .jpg | 352.778 x 245.181 mm - 1000 x 695  
Pixel - 72 dpi

| 9,5 kB | .png | 74.083 x 51.506 mm - 210 x 146 Pixel  
- 72 dpi

| 35,2 kB | .cdr |

## Diagram



ID: kazm4k26

| 24,4 kB | .jpg | 112.889 x 61.031 mm - 320 x 173  
Pixel - 72 dpi

| 85,7 kB | .jpg | 352.778 x 190.5 mm - 1000 x 540  
Pixel - 72 dpi

K.A. Schmersal GmbH & Co. KG, Möddinghofe 3, D-42279 Wuppertal

The details and data referred to have been carefully checked. Images may diverge from original. Further technical data can be found in the manual. Technical amendments and errors possible.

Generated on 08.07.2020 19:02:55