

MKey 1 Tongue interlock safety switches

ABB Jokab Safety MKey1 Compact Safety Interlock switches are designed to provide position detection for small moving guards.

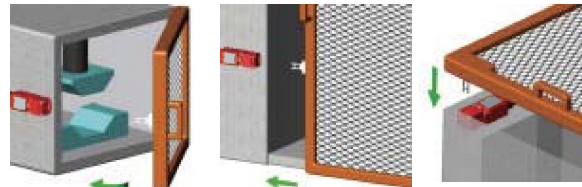
They are designed to fit to the leading edge of sliding, hinge or lift off machine guards.



The rugged Stainless Steel actuator profile is designed to match a cam mechanism to provide a positively operated not easily defeatable interlock mechanism.

The compact body, 22mm fixing profile and rotatable head make them easy to install where space is restricted. A Plastic Flexible Actuator is available for tight radius guards.

Contact blocks are replaceable with optional slow or snap break operation.



Hinged guard

Sliding guard

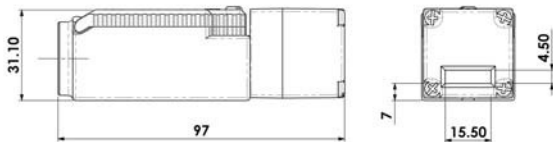
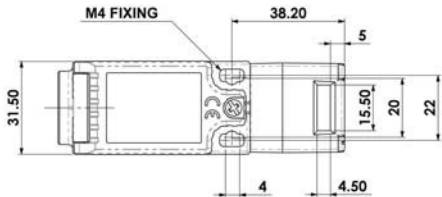
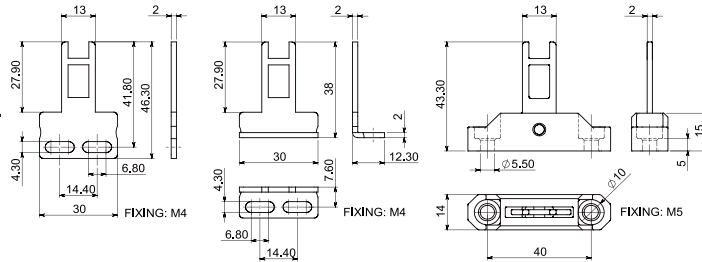
Lift off guard

Actuator options

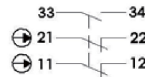
Flat

Angled

Plastic Flexible



Slow Make Break 2NC 1NO



Standards EN1088 IEC 947-5-1 EN 60204-1
ISO 13849-1 EN62061 EN 954-1 UL508

Safety Classification and Reliability Data:

Mechanical Reliability B10d	2.5 x 10 ⁶ operations at 100mA load
EN 954-1	up to Category 4 with Safety Relay
ISO 13849-1	up to PLe depending upon system architecture
EN 62061	up to SIL3 depending upon system architecture
Safety Data - Annual Usage	8 cycles per hour / 24 hours per day / 365 days
PFHd	3.44 x 10 ⁻⁸
Proof Test Interval (Life)	35 years
MTTFd	356 years
Utilization Category	AC15 A300 3A.
Thermal Current (Ith)	5A
Rated Insulation / Withstand Voltages	600VAC / 2500 VAC
Travel for Positive Opening	6mm
Actuator entry minimum radius	175mm Standard 100mm Flexible
Maximum Approach / Withdrawal speed	600mm/s.
Body Material	Polyester
Enclosure Protection	IP67
Operating Temperature	-25C. +80C.
Vibration	IEC 68-2-6, 10-55Hz+1Hz.
Conduit Entry	Excursion: 0.35mm, 1 octave/min
Fixing	Various (See Sales Part Numbers)
	2 x M4

	Quick Connect (QC) M12 8 Way Male (on Flying Lead 250mm)	Switch Circuit
	Pin view from switch	
	1 7	11 /12
	6 5	21 / 22
	4 3	33 / 34

MKey 1	
2TLA050021R0100	Mkey1, Compact M20, 2NC/1NO Angle Key
2TLA050021R1100	Mkey1, Compact NPT, 2NC/1NO Angle Key
2TLA050021R2100	Mkey1, Compact QC, 2NC/1NO Angle Key
2TLA050021R0200	Mkey1, Compact M20, 2NC/1NO Flat Key
2TLA050021R1200	Mkey1, Compact NPT, 2NC/1NO Flat Key
2TLA050021R2200	Mkey1, Compact QC, 2NC/1NO Flat Key
2TLA050021R0300	Mkey1, Compact M20, 2NC/1NO Flex Key
2TLA050021R1300	Mkey1, Compact NPT, 2NC/1NO Flex Key
2TLA050021R2300	Mkey1, Compact QC, 2NC/1NO Flex Key