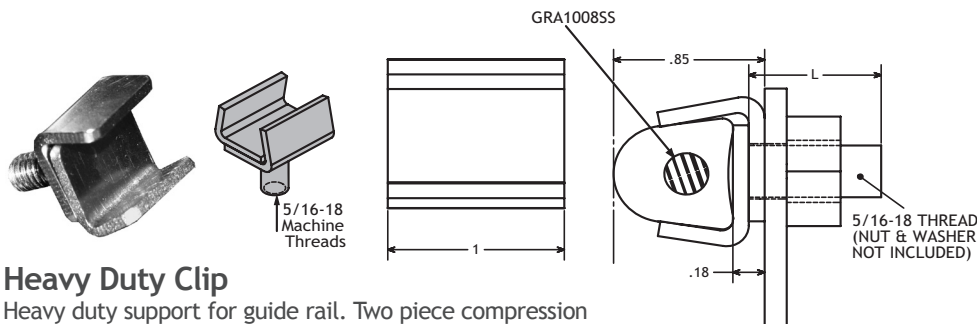


POBCO Two Piece Stainless Steel Rail Clamp

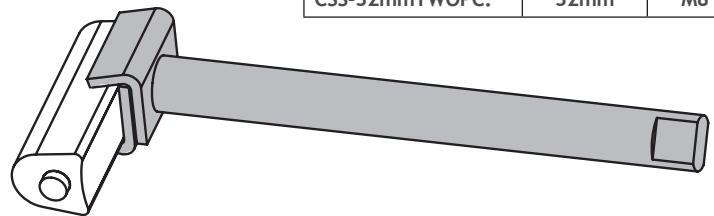
Ensures tight fit with all guide rails to prevent movement of guide rails during operation. Highly recommended in applications where single clips are required. They can be re-used and repositioned due to the 2 piece construction.



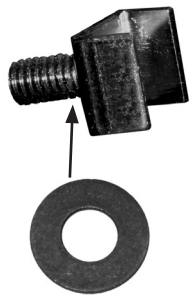
Heavy Duty Clip

Heavy duty support for guide rail. Two piece compression style for easy assembly and adjustment. Works with brackets, support beams and adjusting rods.

PART NUMBER	BOLT LENGTH (L)	THREAD
CSS-5/8TWOPC.	5/8	5/16
CSS-3/4TWOPC.	3/4	5/16
CSS-7/8TWOPC.	7/8	5/16
CSS-1TWOPC.	1	5/16
CSS-1-1/8TWOPC.	1-1/8	5/16
CSS-1-1/4TWOPC.	1-1/4	5/16
CSS-16mmTWOPC.	16mm	M8
CSS-19mmTWOPC.	19mm	M8
CSS-25.5mmTWOPC.	25.5mm	M8
CSS-32mmTWOPC.	32mm	M8



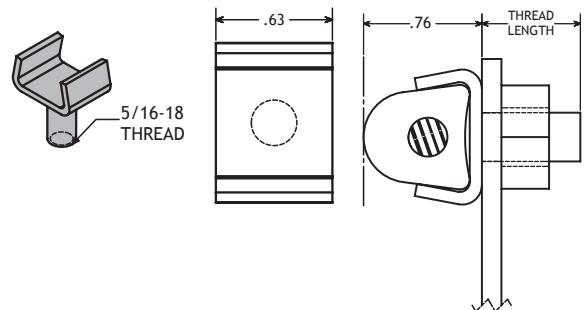
POBCO One Piece Stainless Steel Rail Clamp



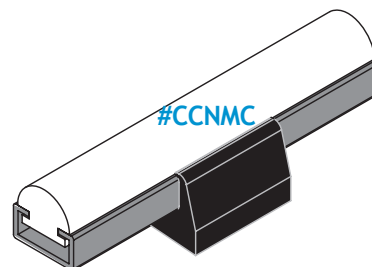
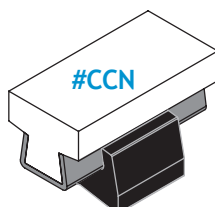
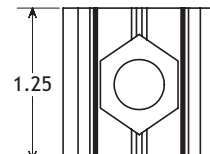
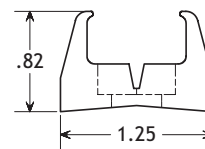
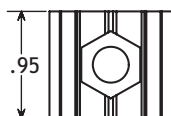
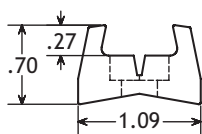
Stainless Steel Compression Clip

Part #CSS-5/8" Stud Length 5/16"-18 thread
 Part #CSS-1-1/2" Stud Length 5/16"-18 thread
 Part #CSS-10mm 10mm lg. m6 thread
 Part #CSS-15mm 15mm lg. m8 thread
 Part #CSS-20mm 20mm lg. m6 thread

#CWSS Compression Washer is available to ensure tightening with #28 Knob or Support Rods.



POBCO Plastic Compression Clip



PLASTIC COMPRESSION CLIP #CCN

Tightens w/ #28 Plastic Knob and 5/16-18 S.S. Hex Bolt
 Also used with SSR Support Rods

PLASTIC CLIP FOR "A" SIZE MOUNTING CHANNELS #CCNMC

(Mounting Channels see pg. 40)
 Tightens w/ #28 Plastic Knob and 5/16-18 S.S. Hex Bolt