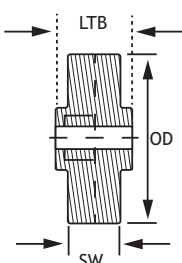


## POBCO Skate Wheels

POBCO offers a variety of skate wheel styles and materials. Brief descriptions are listed. For more details, please contact the POBCO sales department. Colors vary - please inquire.



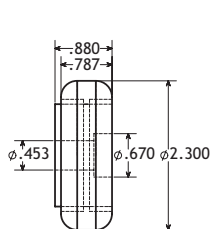
| PART NO.      | STYLE | OD    | BORE  | LENGTH THRU BORE (LTB) | SURFACE WIDTH (SW) | DESCRIPTION                                | LOAD CAP. |
|---------------|-------|-------|-------|------------------------|--------------------|--|-----------|
| SWDRSS1/4     | G     | 1.910 | 1/4   | 0.814                  | 0.617              | Acetal, double row stainless balls         | 75        |
| SWDRCS1/4     | G     | 1.910 | 1/4   | 0.818                  | 0.617              | Acetal, double row carbon steel balls      | 75        |
| SWDRSS5/16    | G     | 1.910 | 5/16  | 0.814                  | 0.612              | Acetal, double row stainless balls         | 75        |
| SWDRCS5/16    | G     | 1.910 | 5/16  | 0.814                  | 0.612              | Acetal, double row carbon steel balls      | 75        |
| SWSRSS1/4SW   | A     | 1.925 | 1/4   | 0.923                  | 0.610              | Acetal, single row stainless balls         | 55        |
| SW652ED       | A     | 1.920 | 1/4   | 0.918                  | 0.630              | Acetal, single row stainless balls         | 55        |
| SWSRSS5/16    | A     | 1.925 | 5/16  | 0.927                  | 0.630              | Acetal, single row stainless balls         | 55        |
| SWSRCS5/16    | A     | 1.925 | 5/16  | 0.927                  | 0.630              | Acetal, single row carbon steel balls      | 55        |
| SWHDPECS1/4   | B     | 1.925 | 1/4   | 0.810                  | 0.615              | HDPE, steel sleeve ball bearing            | 100       |
| SWHDPECS5/16  | B     | 1.925 | 5/16  | 0.810                  | 0.615              | HDPE, steel sleeve ball bearing            | 100       |
| SWHSPCS3/8    | B     | 2.812 | 3/8   | 1.437                  | 1.125              | High strength plastic, dual steel bearings | 300       |
| SWABS1/4      | C     | 1.630 | 1/4   | 0.885                  | 0.820              | Light duty all plastic - Molded ABS        | 25        |
| SWURECS5/16   | D     | 2.250 | 5/16  | 0.873                  | 0.562              | 75A urethane covered steel ball bearing    | 80        |
| SWUREW/BOLT   | E     | 1.500 | 0.370 | 0.940                  | 0.750              | 85A orange urethane with hardware          | 10        |
| SWABS/D1/4ORG | F     | 1.875 | 1/4   | 0.882                  | 0.670              | ABS orange surface, white Delrin insert    | 25        |



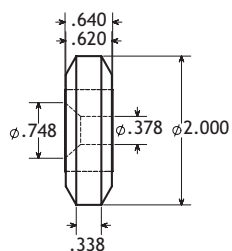
## POBCO Delrin Over-Head Conveyor Wheels & Cam Track Rollers

For Food Processing/Poultry/Garment Industries and Others (With 420 Stainless Steel Balls)

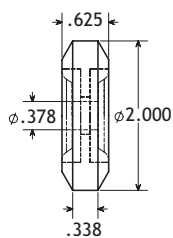
These wheels & yokes are used by major OEM systems such as Meyn, Linco, Systemate, X348, Johnson and others. These caged wheels offer performance improvements such as corrosion resistance, low friction, and quiet operation. They can be washed down, require no lubrication, and are Food Approved.



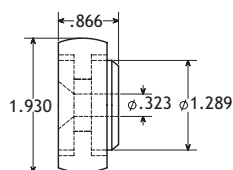
OVDDR073714SS  
(X348 Systems)



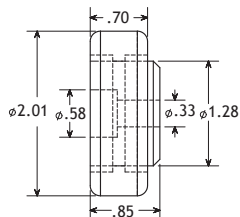
OVDDR063210SS  
(JOHNSON)



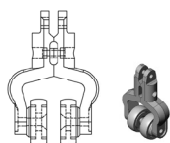
OVDDR053210SS  
(JOHNSON)



OVDDR053114SS  
(MEYN)

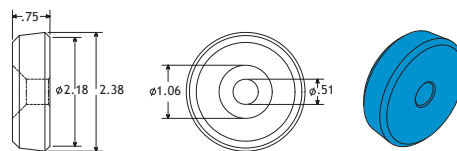


OVDDR063214SS  
(STORK)

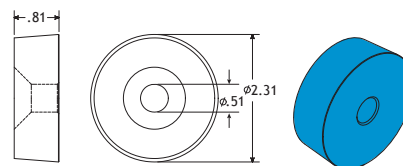


OVDDR1.90YOKE  
(MEYN)

### Machined Blue UHMW Wheels



OVUBLUE.75



OVUBLUE.81