

POBCO Half Round Snap-Ons

Materials:

- Ultra-D (UHMWPE)
- Plus (fluid lube-filled UHMWPE)
- Nylon MD (dry lubricant-filled nylon)
- PTFEs (Hi-Temp)*

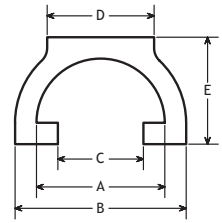
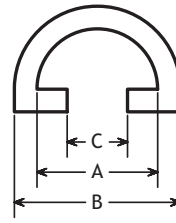
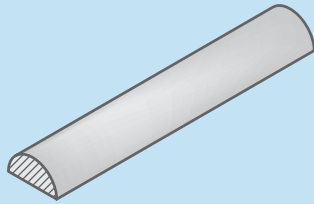
Stainless Steel Round Rods

- 1/4" diameter – 1/4RoundSSL144
- 1/2" diameter – 1/2RoundSSL144
- 3/8" diameter – 3/8RoundSSL144



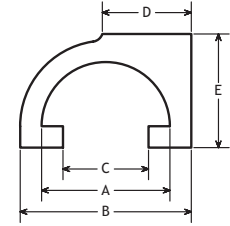
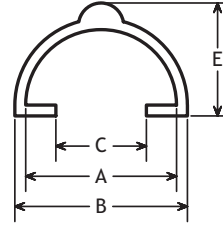
Stainless Steel Half Rounds

- HR08SS - 1/2"
- HR10SS - 5/8"
- HR12SS - 3/4"



PROFILE 1

PROFILE 2



PROFILE 3

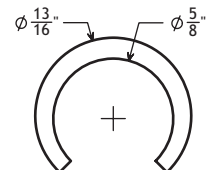
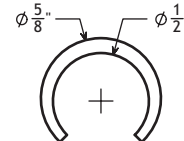
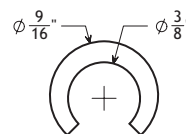
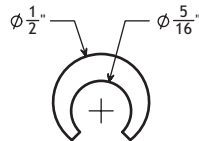
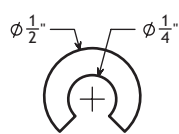
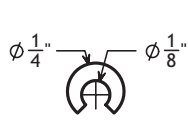
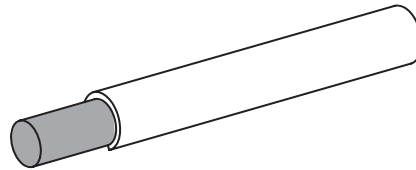
PROFILE 4

PART NUMBER	PROFILE	A	B	C	D	E	MATERIAL
HRU-081106*	1	1/2	11/16	1/4	-	-	UHMW
HRU-101307*	1	5/8	13/16	3/8	-	-	UHMW
HRG-101208	3	5/8	25/32	3/8	-	13/32	Nylon MD
HRU-121508*	1	3/4	1	1/2	-	-	UHMW
HRU-121510	2	3/4	1	9/16	5/8	19/32	UHMW
HRU-121504F	4	3/4	1	1/2	1/4	19/32	UHMW
HRU-121508F	4	3/4	1	1/2	1/2	19/32	UHMW

POBCO Full Round Snap-Ons

Materials:

- Ultra-D (UHMWPE)
- Plus (fluid lube-filled UHMWPE)
- Nylon
- Virgin PTFE



1/8" Full Round Snap-On
FRU-0204 (UHMW)
FRN-0204 (Nylon)

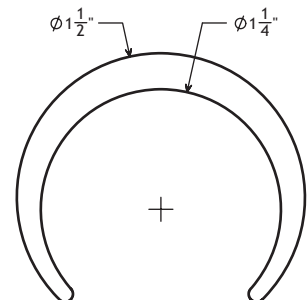
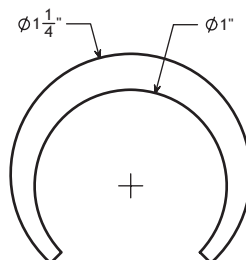
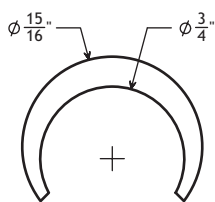
1/4" Full Round Snap-On
FRU-0408 (UHMW)
FRT-0407 (PTFE)

5/16" Full Round Snap-On
FRU-0508 (UHMW)
FRT-0507 (PTFE)

3/8" Full Round Snap-On
FRU-0609 (UHMW)
FRT-0611 (PTFE)

1/2" Full Round Snap-On
FRU-0811 (UHMW)
FRT-0811 (PTFE)

5/8" Full Round Snap-On
FRU-1013 (UHMW)
FRT-1013 (PTFE)



3/4" Full Round Snap-On
FRU-1215 (UHMW)

1" Full Round Snap-On
FRU-1620 (UHMW)

1-1/4" Full Round Snap-On
FRU-2024 (UHMW)