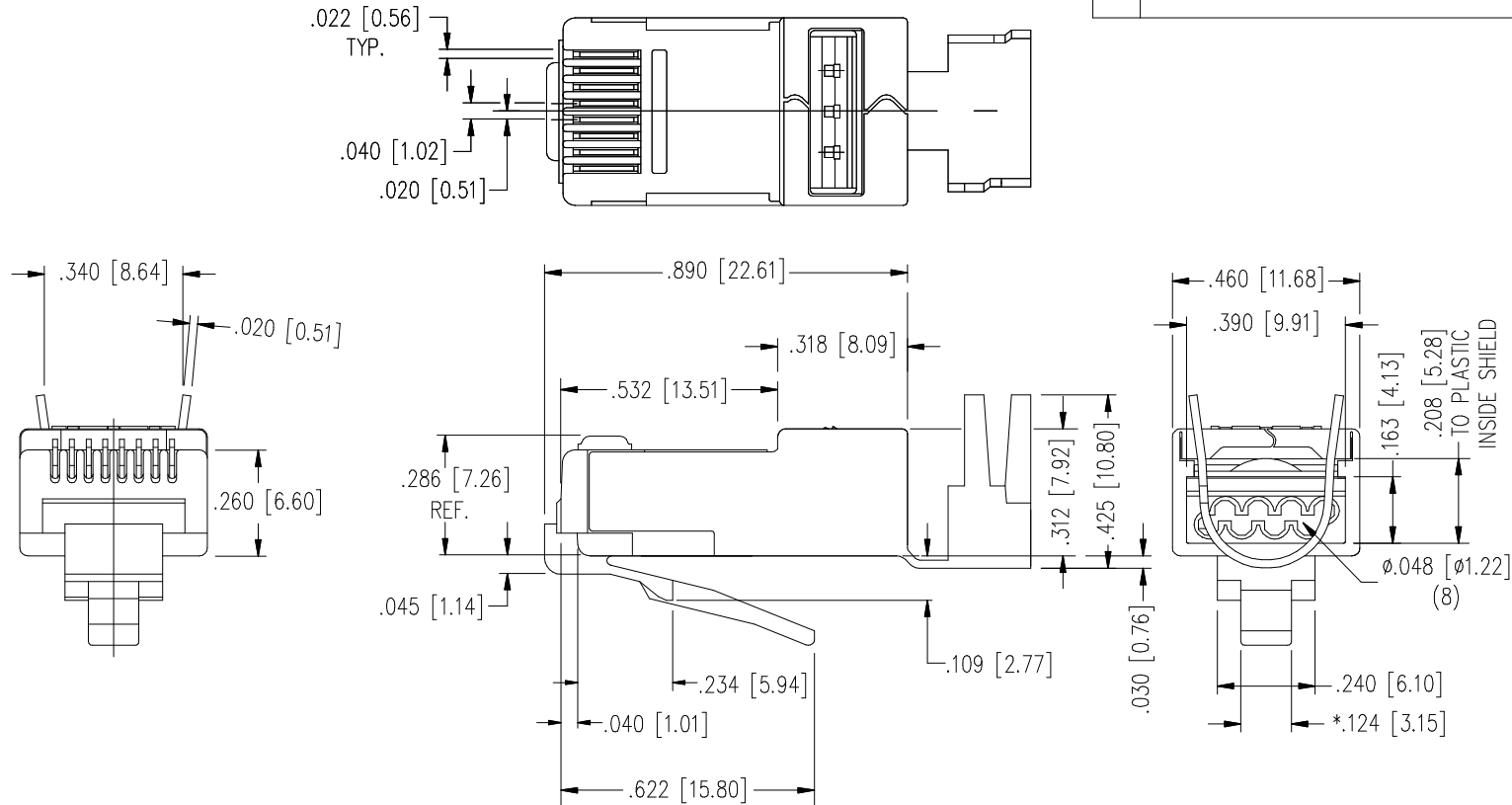


THE INFORMATION CONTAINED IN THIS DRAWING IS THE SOLE PROPERTY OF L-COM, INC. ANY REPRODUCTION IN PART OR WHOLE WITHOUT THE WRITTEN PERMISSION OF L-COM, INC. IS PROHIBITED.

REVISIONS			
REV	DESCRIPTION	DATE	APPROVED
A	INITIAL RELEASE	10/16/12	D.GRIFFIN
B	ECN 8521: REVISED CONTACT NOTE TO CLEARLY STATE 50μI" GOLD.	10/21/16	D. DESJARDIN



**SPECIFICATIONS:**  
**PERFORMANCE:**

MEETS OR EXCEEDS CATEGORY 6 ANSI/EIA 568-C.2  
PERFORMANCE TUNED TO CABLES MEETING CATEGORY 6 SPECIFICATIONS.

**CONTACT MATERIAL:**  
**CONTACT PLATING:**

PHOSPHOR BRONZE - .012  
50μINCHES OF GOLD IN CONTACT AREA  
OVER 100μINCHES MINIMUM NICKEL PLATE.

**SHIELD MATERIAL:**  
**SHIELD PLATING:**

CDA-260 1/4 HARD BRASS  
100% TIN 100-150μINCHES TIN PLATE

**PLUG MATERIAL:**

POLYCARBONATE

**PLUG DIMENSIONS/TOLERANCES:**

COMPLY WITH ANSI/TIA-1096-A REQUIREMENTS

**FLAME AUTO EXTINGUISH:**

UL94V-0

**OPERATING TEMPERATURE:**

-40°C TO +85°C

**INSERTION/EXTRACTION LIFE:**

1000 CYCLES

**CONTACT RESISTANCE:**

10 MILLIOHMS MAX.

**CURRENT/VOLTAGE:**

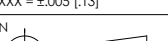

30VAC/42VDC AT 1.5 AMPS

**NOTES:**

1. EIGHT CONDUCTOR MODULAR PLUG
2. FOR HIGH SPEED APPLICATION
3. FOR CONDUCTORS WITH AN O.D. RANGE OF .044 - .048"
4. USE FOR SOLID OR STRANDED CONDUCTORS
5. PRODUCT REQUIRES A CONDUCTIVE LOAD BAR
6. FOR CABLE DIAMETERS UP TO .310"
7. COMPONENT SHALL BE INDIVIDUALLY PACKAGED IN ACCORDANCE WITH L-COM SPECIFICATION PS-0031.

**REGULATORY COMPLIANCE:**

CE2011/65/EU(RoHS DIRECTIVE)

UNLESS OTHERWISE SPECIFIED, DIMENSIONS ARE IN INCHES [mm]  OVERALL CABLE LENGTH TOLERANCE: ≤12 [305] = +1 [25] / -0 >12 [305] ≤60 [1524] = +2 [51] / -0 >60 [1524] ≤120 [3048] = +4 [102] / -0 >120 [3048] ≤300 [7620] = +6 [152] / -0 >300 [7620] = +5% / -0%  ALL OTHER DIMENSIONAL TOLERANCES: .X = ±.2 [5.08] .XX = ±.02 [51] .XXX = ±.005 [13]  PROJECTION 	APPROVALS	DATE	 50 HIGH STREET NORTH ANDOVER, MA 01845	
	DRAWN BY D.FRISIELLO	10/16/12		
	CHECKED BY D.GUITTADAURO	10/16/12		
	APPROVED BY D.GUITTADAURO	10/16/12		
CONFIGURATION DETAILS OF UNDIMENSIONED FEATURES MAY VARY	CATEGORY		TELECOM/MODULAR	
	PRODUCT DESCRIPTION			
	CAT 6 SHIELDED MODULAR PLUG, RJ45 (8P8C), FOR LARGE OD CONDUCTORS			
COLOR VARIATIONS MAY OCCUR	SIZE <b>A</b>	FSCM NO. <b>43321</b>	DWG. NO. <b>TSP8048C5S</b>	REV. <b>B</b>
	SCALE: NONE		CAD FILE: TSP8048C5S.SLDDRW	SHEET 1 OF 1