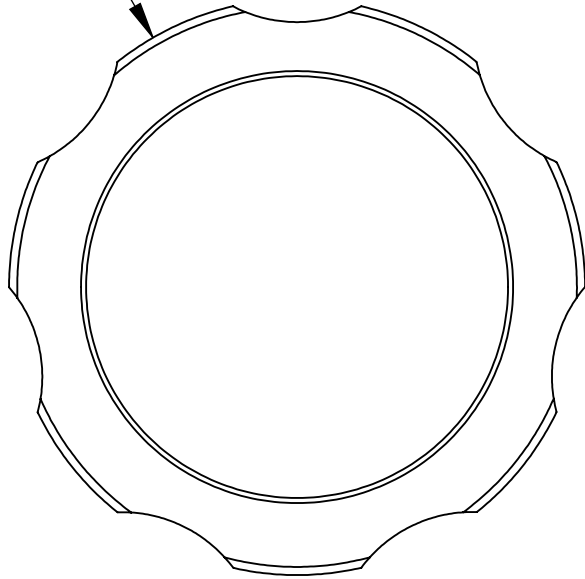
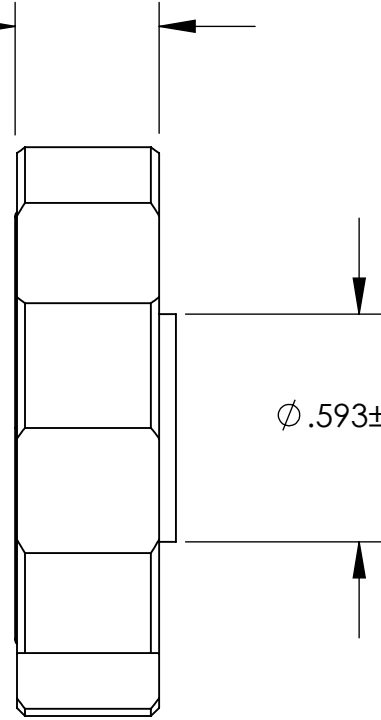


**UNCONTROLLED DOCUMENT**

$\phi 1.500 \pm .031$



$.375 \pm .031$



$\phi .593 \pm .031$

NOTE: PRESSES ONTO 5/16" STD.  
SOCKET HEAD CAP SCREW.

TOLERANCES UNLESS NOTED

- $\pm .005$  ON DIMENSIONS THRU  $.625$
- $\pm .008$  ON DIMENSIONS  $.626$  THRU  $1.000$
- $\pm .010$  ON DIMENSIONS  $1.001$  THRU  $1.500$
- $\pm .015$  ON DIMENSIONS LARGER THAN  $1.500$
- $\pm .015$  ON FRACTIONAL DIMENSIONS

**WE RESERVE THE RIGHT  
TO DISCONTINUE ITEMS,  
CHANGE SPECIFICATIONS  
OR DESIGN AT ANY TIME  
WITHOUT NOTICE AND  
WITHOUT INCURRING  
ANY OBLIGATIONS**

PROPERTY OF  
**MICRO PLASTICS INC.**

CATALOG DRAWING  
FLOWERETTE KNOB  
MICRO P/N 29F516B  
DWG. # 29F516B  
FILE SERVER\ENG\WEB

MATERIAL: ACETAL; BLACK

DATE

SCALE  
2:1

**DB**