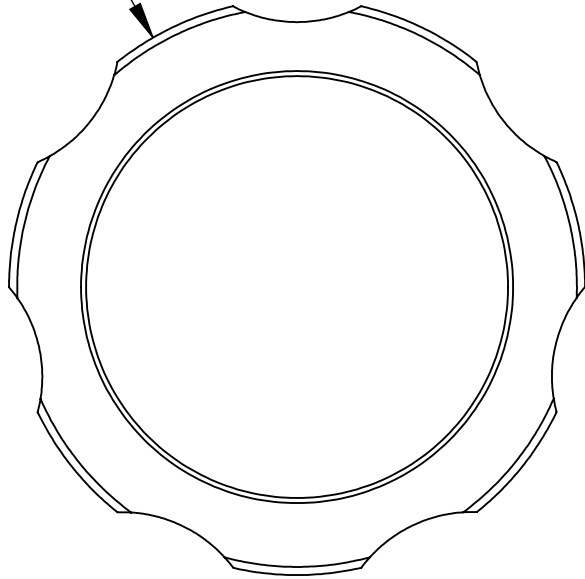
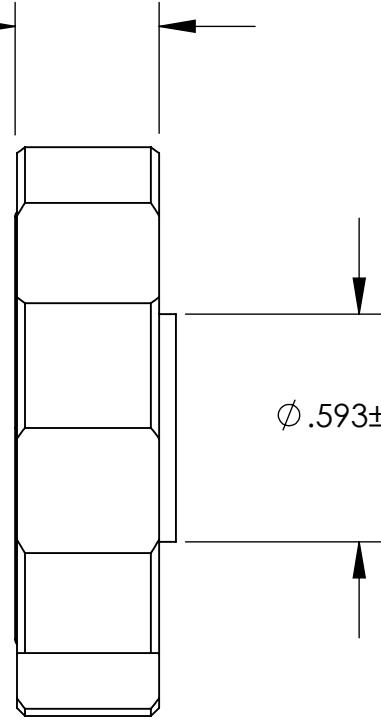


UNCONTROLLED DOCUMENT

$\phi 1.500 \pm .031$



$.375 \pm .031$



$\phi .593 \pm .031$

NOTE: PRESSES ONTO 5/16" STD.
SOCKET HEAD CAP SCREW.

TOLERANCES UNLESS NOTED

- $\pm .005$ ON DIMENSIONS THRU $.625$
- $\pm .008$ ON DIMENSIONS $.626$ THRU 1.000
- $\pm .010$ ON DIMENSIONS 1.001 THRU 1.500
- $\pm .015$ ON DIMENSIONS LARGER THAN 1.500
- $\pm .015$ ON FRACTIONAL DIMENSIONS

**WE RESERVE THE RIGHT
TO DISCONTINUE ITEMS,
CHANGE SPECIFICATIONS
OR DESIGN AT ANY TIME
WITHOUT NOTICE AND
WITHOUT INCURRING
ANY OBLIGATIONS**

PROPERTY OF
MICRO PLASTICS INC.

CATALOG DRAWING
FLOWERETTE KNOB
MICRO P/N 29F516BL
DWG. # 29F516BL
FILE SERVER\ENG\WEB

MATERIAL: ACETAL; BLUE

DATE

SCALE
2:1

DB