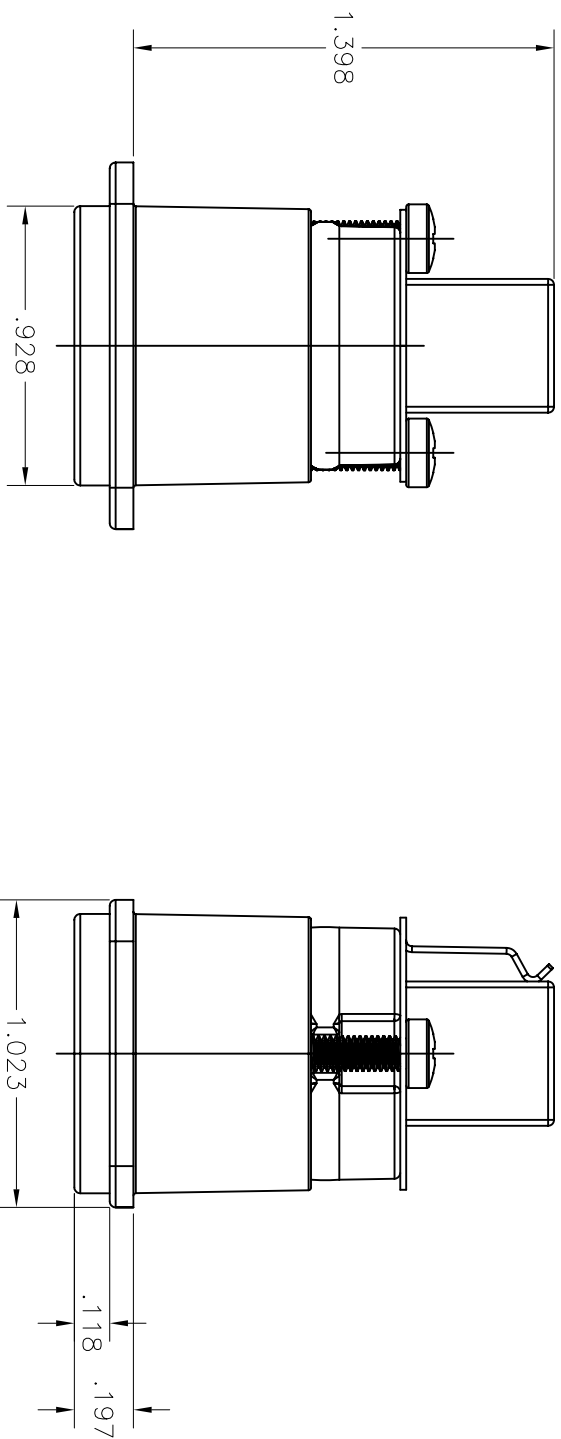
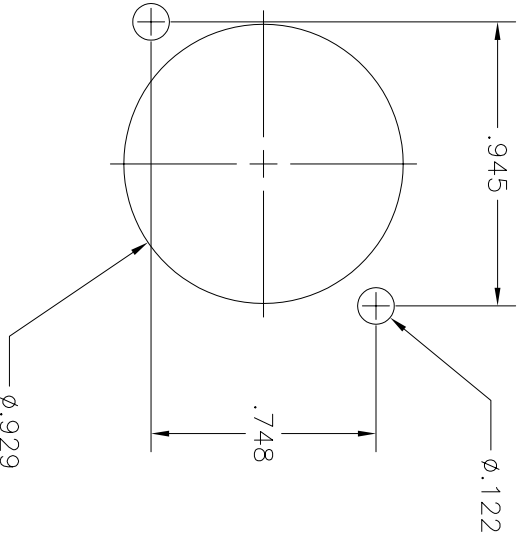
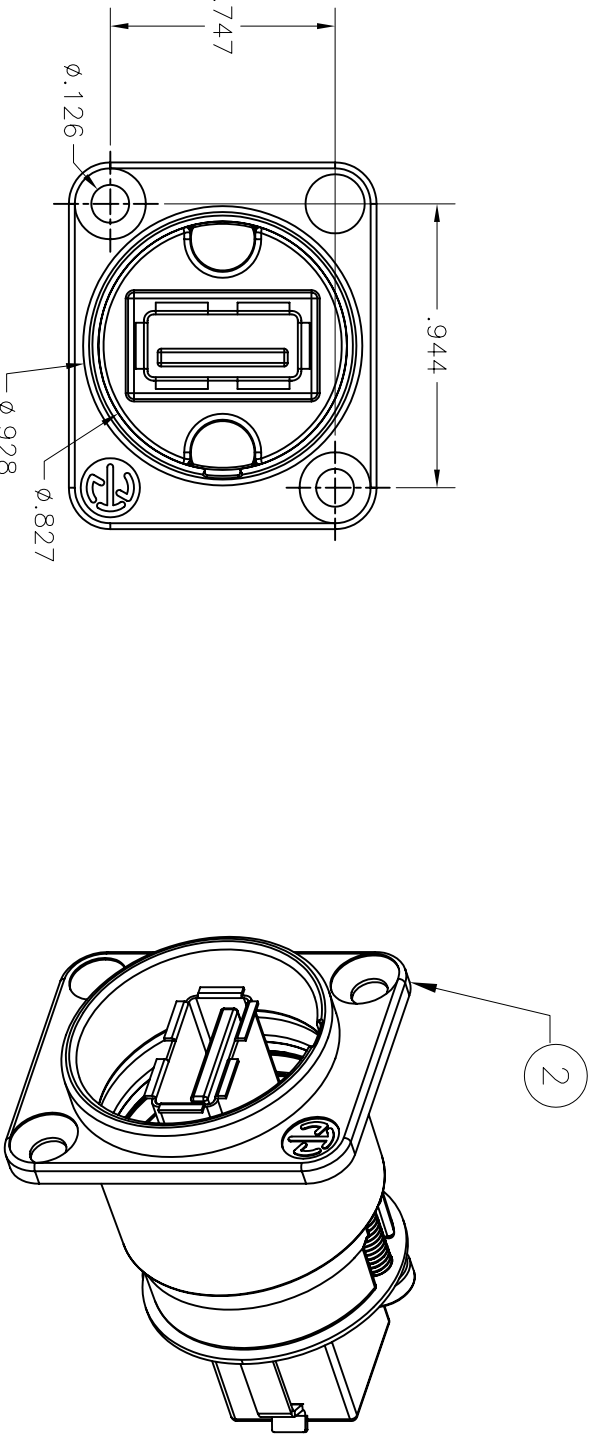


ITEM NO.	DESCRIPTION	QTY.
1	FLAT HEAD SCREW (NOT SHOWN)	20
2	CONNECTOR	10
3	HEX NUT WITH TOOTH WASHER (NOT SHOWN)	20

CATALOG #	DESCRIPTION
USB10	USB FEED THRU. CONNECTOR



- NOTES:  
UNLESS OTHERWISE SPECIFIED:
- SPECIFICATIONS SUBJECT TO CHANGE WITHOUT NOTIFICATION.
  - SOLD IN QTY OF 10 PER BAG.
  - SUGGESTED PRECISION NUT DRIVER USED FOR INSTALLATION REF, WIHA 265 SERIES NUT DRIVER.

REV.	ECN	DATE	DESCRIPTION	CHG BY	APPD BY
B	6622	7/10/09	UPDATED CONNECTOR TO NEW DESIGN	CG	

Created on AUTOCAD

DIMENSIONING AND TOLERANCE PER  
ANSI Y14.5M-1982  
UNLESS OTHERWISE SPECIFIED,  
DIMENSIONS ARE IN INCHES (MM).  
TOLERANCES  
.XX = ±.01 (.25)  
.XXX = ±.005 (.127)  
.XXXX = ±.0025 (.0635)  
ANGLE TOL. ±1°

PROJECT REFERENCE:  
**2005-20**

DRAWN BY:  
C. JOHNSTON 6/20/06

CHECKED BY:  
G. KIERSTEAD 7/5/06

APPROVED BY:  
G. KIERSTEAD 7/5/06

TITLE:  
USB10 PANEL MOUNT CONNECTOR  
GENDER CHANGER - TYPE A TO TYPE B

Hubbell  
HUBBELL INCORPORATED (Delaware)  
14 Lord's Hill Road, Stonington, Connecticut 06378

SIZE  
**C**

DRAWING NO.  
**HWS12432C**

REV.  
**B**