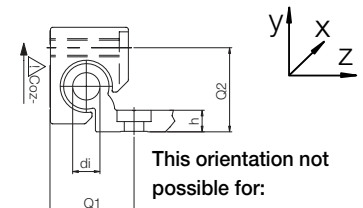
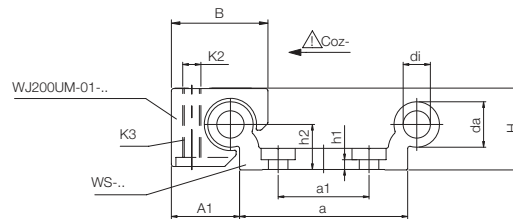
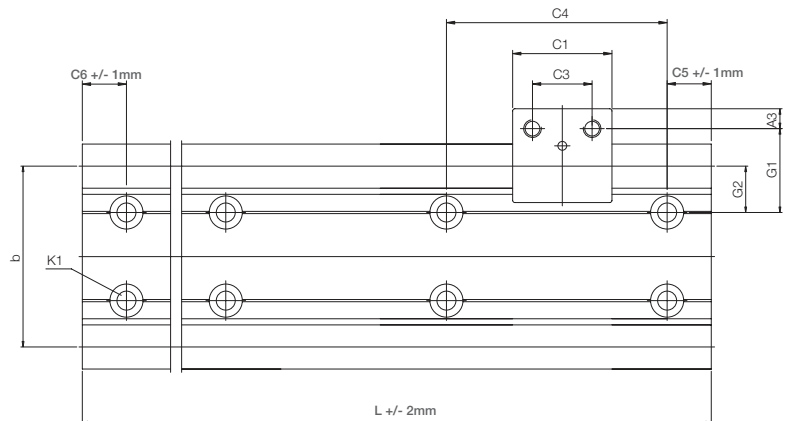


DryLin® W - Profile guides - Product range

Double rail, round, hard-anodized aluminum



This orientation not possible for:
WS-10-40
WS-10-80
WS-10-120



NOTE: The hard anodized surface of DryLin rails and shafts is integral to the tribology of the bearing system - therefore variations in color, and superficial crazing under the anodic layer may occur.

Hard anodized surfaces ► Page 888

Technical data and dimensions [mm]

Part No.	Weight [kg/m]	H ⁵⁷⁾ ±0.25	da	di	L max.	a	A1	b	h	h1	h2	G1	G2	a1 ⁶²⁾	Q1	Q2
WS-10-40	1.00	18	10 _{-0.1}	-	4,000	40 _{-0.5}	16.5	40	5.5	5.5 ⁵⁸⁾	9	30	20	-	-	-
WS-10-80	1.50	18	10 _{-0.1}	-	4,000	74 _{-0.7}	16.5	74	5.5	5.5 ⁵⁸⁾	9	27	17	40	-	-
WS-10-120	2.02	18	10 _{-0.1}	-	4,000	120 _{-0.7}	16.5	120	5.5	5.5 ⁵⁸⁾	9	30	20	80	-	-
WS-16-60	1.96	27	16 _{-0.1}	8.0	4,000	54 _{-0.5}	25.0	58	7.5	3.5	14	43	29	-	32	28
WS-20-80	3.30	36	20 _{-0.1}	10.2	4,000	74 _{-0.7}	30.0	82	9.5	4.5	20	38	21	40	37	37
WS-25-120	5.8	45	25 _{-0.15}	14.0	4,000	120 _{-0.7}	37.5	131	11.5	5.5	25	46.5	25.5	80	45.5	46

⁵⁷⁾ Height dimension minus the bearing clearance tolerance

⁶²⁾ WS-10-40/-16-60 a single row of mounting holes down the centerline; WS-10-80/-10-120/-20-80/-25-120 two parallel rows of mounting holes

Part No.	C4	C5		C6		K1 for screw DIN 912	ly [mm ²]	lz [mm ²]	Wby [mm ²]	Wbz [mm ²]
		min.	max.	min.	max.					
WS-10-40	120	20	79.5	20	79.5	M6 ⁵⁸⁾	91,000	5,100	3,600	590
WS-10-80	120	20	79.5	20	79.5	M6 ⁵⁸⁾	388,000	6,100	9,200	650
WS-10-120	120	20	79.5	20	79.5	M6 ⁵⁸⁾	1,303,000	7,100	20,000	720
WS-16-60	120	20	79.5	20	79.5	M8	367,600	26,100	9,900	1,900
WS-20-80	120	20	79.5	20	79.5	M8	1,080,000	78,700	21,000	4,000
WS-25-120	150	25	99.5	25	99.5	M10	4,867,000	215,000	62,400	8,500

Standard hole pattern: C5 = C6, please order with drawing for C5 ≠ C6

⁵⁸⁾ Non-counterbored holes