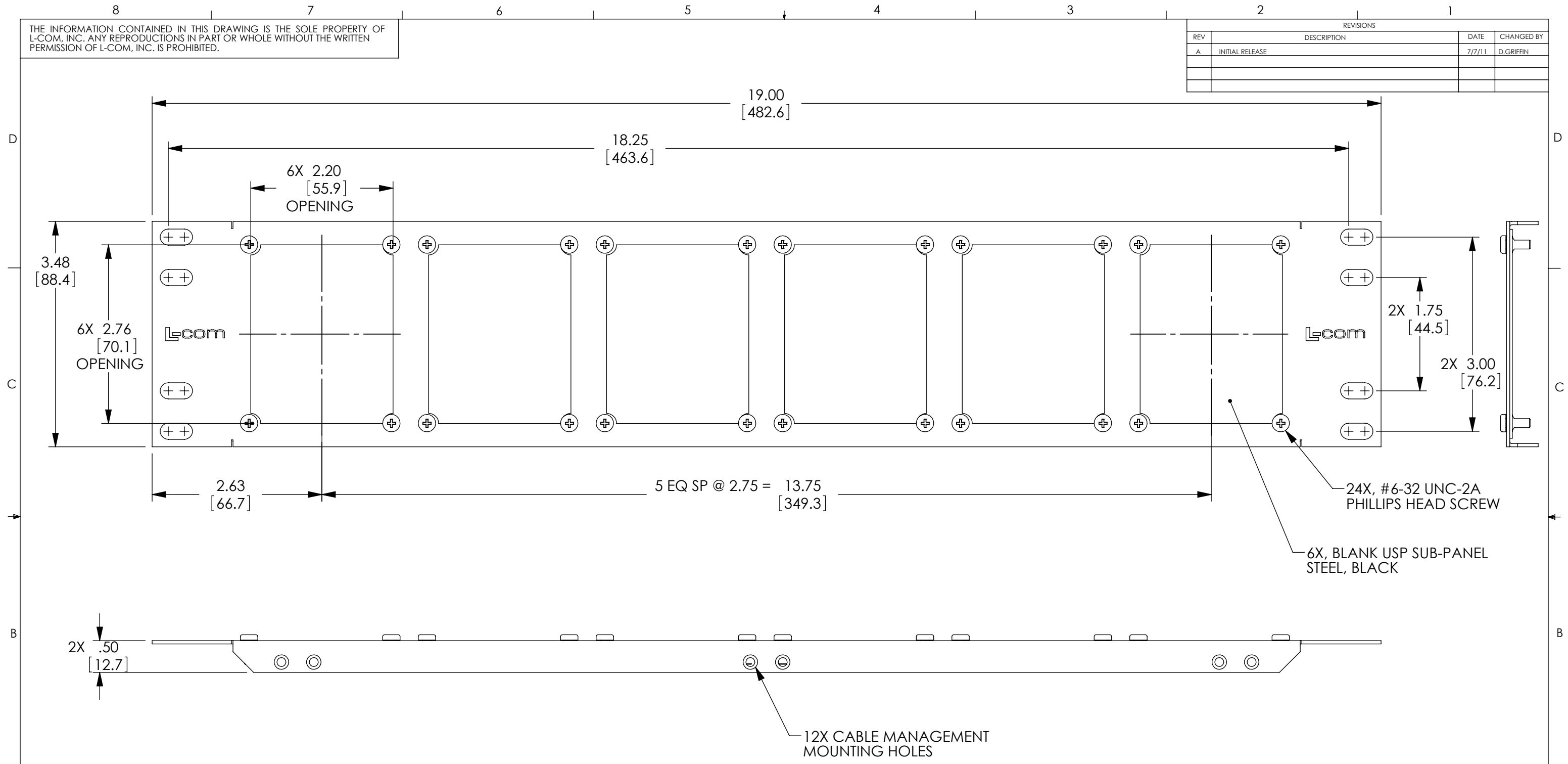


THE INFORMATION CONTAINED IN THIS DRAWING IS THE SOLE PROPERTY OF L-COM, INC. ANY REPRODUCTIONS IN PART OR WHOLE WITHOUT THE WRITTEN PERMISSION OF L-COM, INC. IS PROHIBITED.

REVISIONS			
REV	DESCRIPTION	DATE	CHANGED BY
A	INITIAL RELEASE	7/7/11	D.GRIFFIN



- NOTES:**
1. MATERIAL: .06 THICK COLD ROLLED STEEL.
 2. PANEL FINISH: FLAT BLACK POWDER COAT.
 3. SILKSCREEN COLOR: WHITE.
 4. PANEL IS SHIPPED WITH 6X SUB-PANELS AND HARDWARE NOT ASSEMBLED.
 5. PANEL SHALL BE PACKAGED IN ACCORDANCE WITH L-COM SPECIFICATION PS-0014.

RoHS Compliant ✓

UNLESS OTHERWISE SPECIFIED, DIMENSIONS ARE IN INCHES [mm]

DIMENSIONAL TOLERANCES:
 X = ±.1
 .XX = ±.02
 .XXX = ±.005

ANGULAR TOLERANCES:
 ALL = ± 1°

PROJECTION

APPROVALS	DATE
DRAWN BY D. CASTRO	7/6/11
CHECKED BY M. MARTINEZ	7/6/11
APPROVED BY M. MARTINEZ	7/6/11

CONFIGURATION DETAILS OF UNDIMENSIONED FEATURES MAY VARY

COLOR VARIATIONS MAY OCCUR

		Global Connectivity		45 BEECHWOOD DRIVE NORTH ANDOVER, MA 01845	
CATEGORY: RACK PANEL					
PRODUCT DESCRIPTION: 3.5"X19" PANEL KIT W/6 USP-STL					
SIZE: B	FSCM NO.: 43321	DWG. NO.: UPR-S-KIT	REV.: A		
SCALE: 1:1		CAD FILE: UPR-S-KIT.SLDDRW		SHEET 1 OF 1	