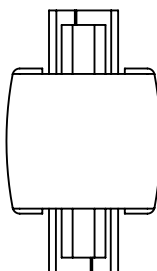
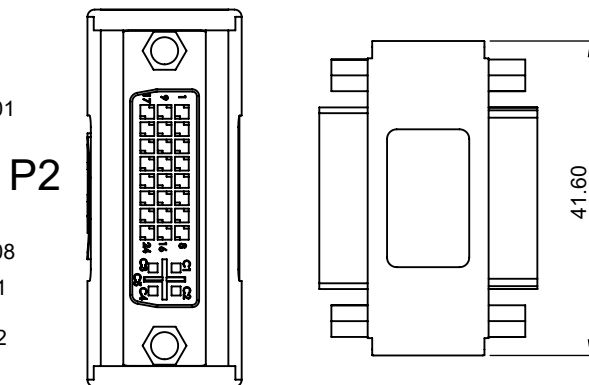
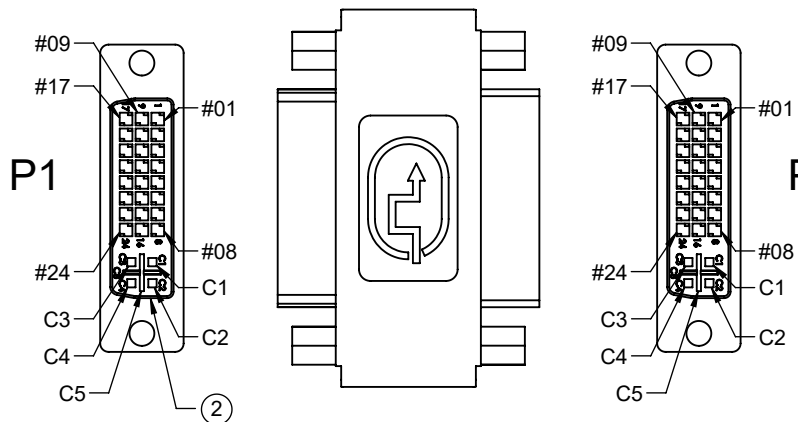
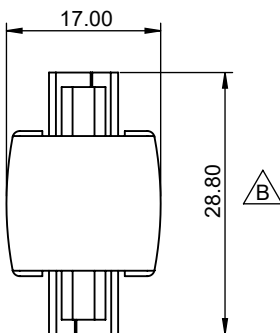


THE INFORMATION CONTAINED IN THIS DRAWING IS THE SOLE PROPERTY OF L-COM, INC. ANY REPRODUCTION IN PART OR WHOLE WITHOUT THE WRITTEN PERMISSION OF L-COM, INC. IS PROHIBITED.

REVISIONS			
REV	DESCRIPTION	DATE	APPROVED
A	REV A DRAWING RELEASED	07/01/2017	BGATES
B	ECN 9781: UPDATE OVERMOLD DIM., BOM NOTE AND PACKAGE NOTE	04/04/2019	BGATES



### PIN OUT

P1	P2	P1	P2
1	1	16	16
2	2	17	17
3	3	18	18
4	4	19	19
5	5	20	20
6	6	21	21
7	7	22	22
8	8	23	23
9	9	24	24
10	10	C1	C1
11	11	C2	C2
12	12	C3	C3
13	13	C4	C4
14	14	C5	C5
15	15	S	S

### NOTES

#### Electrical Properties:

1. It should be no any open/short, miswiring and intermittent failures.
2. The cable shall be 100% electrical test.
3. Voltage test: DC 300V 10MS;  
Insulation resistance: 5.0M ohm/min;  
Conductance resistance: 5.0 ohm/max.

#### Machinery Character:

1. All dimension are "mm" except specified.
2. The cable should be clean, free of oiled/ flash/ burred.
3. Package: Component shall be packaged in a accordance with a LSP-010-2 label on the bag.
4. Cable Ass'y shall be RoHS Compliant.

UNLESS OTHERWISE SPECIFIED, DIMENSIONS ARE IN INCHES [mm] OVERALL CABLE LENGTH TOLERANCE: ≤12 [305] = +1 [25] / -0 >12 [305] ≤60 [1524] = +2 [51] / -0 >60 [1524] ≤120 [3048] = +4 [102] / -0 >120 [3048] ≤300 [7620] = +6 [152] / -0 >300 [7620] = +5% / -0% ALL OTHER DIMENSIONAL TOLERANCES: .X = ± .2 [5.08] .XX = ± .02 [1.51] .XXX = ±.005 [1.3]	APPROVALS	DATE
	DRAWN BY JYOU	07/01/2017
	CHECKED BY BGATES	07/01/2017
	APPROVED BY BGATES	07/01/2017
PROJECTION	CONFIGURATION DETAILS OF UNDIMENSIONED FEATURES MAY VARY	
	COLOR VARIATIONS MAY OCCUR	REF

		50 HIGH STREET NORTH ANDOVER, MA 01845	
CATEGORY			
AUDIO/VIDEO			
PRODUCT DESCRIPTION			
DVI 24+5 F TO F CPLR			
SIZE <b>A</b>	FSCM NO. <b>43321</b>	DWG. NO. VIC00001	REV. <b>B</b>
SCALE: NONE		CAD FILE: VIC00001.SLDDRW	SHEET 1 OF 1

Item	DESCRIPTION	UNIT	QTY
3	Outer molded: 45P PVC, Color: Beige	G	10
2	Conn:DVI (24+5)pin, female, with front screw, insulaton white, pin gold flash.	PCS	2
1	WIRE:UL 1061 26AWG(7/0.16MM) 80° 300V Color: Black	MM	