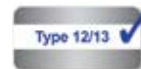


Cablefix® X Cable Entry System



Characteristics

- Cables install easily by pushing the end through the seal from the front
- Strain relief in one direction
- Saves over 50% installation space and 80% installation time vs. using individual cable glands
- Easy to install: can be bolt mounted or snapped directly into enclosures with a 1.5mm wall thickness
- Integrated seals offer excellent ingress protection
- Entry points are sealed by default, eliminating the need for blanking plugs
- Standard cutout makes cabinet preparation easy and is compatible with common punches
- Mounting hardware included with all frames

Specifications

Frame material	Polyamide (PA) with glass fiber reinforcement
Seal material	Butyl (IIR) rubber
Spacer	Chloroprene
Inner membrane	Polyurethane
Temperature range	-40°C to +80°C -40°F to +176°F
Burning behavior	HB according to UL 94
Silicone free	Yes
Protection class	UL Type 4X* UL Type 12 UL Type 13 IP65
Gasket	Polyurethane
Frame color	Black RAL 9005

*Note: UL Type 4x applies to cables with a diameter of 5.0mm and larger.

Part No.	Number of Entry Points	Dimensions (WxHxD) mm	Cutout W x H mm	Number of Cables x Cable OD - Ø mm
----------	------------------------	-----------------------	-----------------	------------------------------------

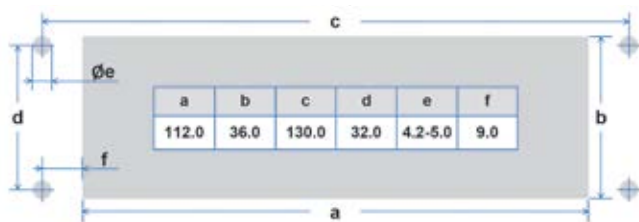
Bolt-Mounted Design (for all enclosures)

606550	12	148.0 x 60.0 x 13.5	112 x 36	12 x 5.0-13.0
606551	23	148.0 x 60.0 x 13.5	112 x 36	23 x 4.0-8.5
606554	22	148.0 x 60.0 x 13.5	112 x 36	16 x 3.0-6.5 4 x 5.0-9.2 2 x 8.0-12.5

Snap-in Design (for enclosures with 1.5mm wall thickness)

606561	12	148.0 x 60.0 x 13.5	112 x 36	12 x 5.0-13.0
606562	23	148.0 x 60.0 x 13.5	112 x 36	23 x 4.0-8.5

Enclosure Cutout Dimensions



Specifications are subject to change without prior notice