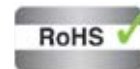
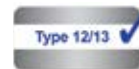


LUTZE Cablefix® One Kits

Cablefix® One Modular Cable Entry System



Characteristics

- Suitable for cables with or without pre-installed connectors
- Kits include frame, hardware, and the layered seals needed to cover entire clamping range specified for each entry point (2 seals per entry point)
- Kits simplify the specifying and ordering process by eliminating the need to order individual seals and frame components
- Easy to install, bolt mounted to a 112 x 46mm cutout
- Individual cables can be easily removed and replaced for troubleshooting, maintenance or retrofitting
- Modular multilayer seals accommodate a wide range of cable diameters
- Strong integrated strain relief
- Unused seals are closed by default, eliminating the need for blanking plugs
- Fiberglass reinforced frame withstands harsh industrial environments
- Standard cutout makes cabinet preparation easy and is compatible with common punches
- Mounting hardware included with all frames

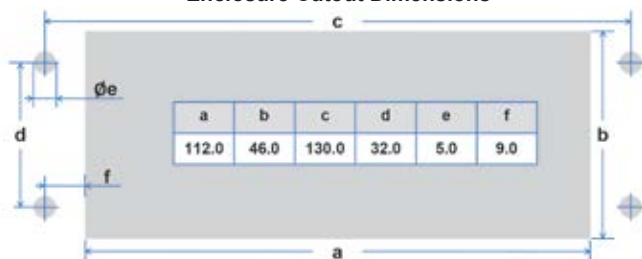
Specifications

Frame material	Polyamide (PA) with glass fiber reinforcement
Seal material	Chloroprene rubber (CR)
Temperature range	-40°C to +80°C -40°F to +176°F
Burning behavior	HB according to UL 94
Silicone free	Yes
Protection class	UL Type 4X UL Type 12 UL Type 13 IP66
Strain relief	Per EN 62444
Gasket	Polyurethane
Frame color	Black RAL 9005

Cablefix® One Kits (include frame, hardware, and seals)

Part No.	Frame Type	Dimensions WxHxD mm	Cutout W x H mm	Number of Cables x Cable OD – Ø mm
606500	4	156.5 x 75.2 x 27.5	112 x 46	2 x 5.0-15.0 2 x 15.0-29.0
606501	7	156.5 x 75.2 x 27.5	112 x 46	6 x 5.0-15.0 1 x 15.0-29.0
606502	10	156.5 x 75.2 x 27.5	112 x 46	10 x 5.0-15.0

Enclosure Cutout Dimensions



Specifications are subject to change without prior notice

The maximum inside dimension of the Cablefix® One frame is 110mm x 41mm. At least one end of the installed cable must be able to pass through this opening.

