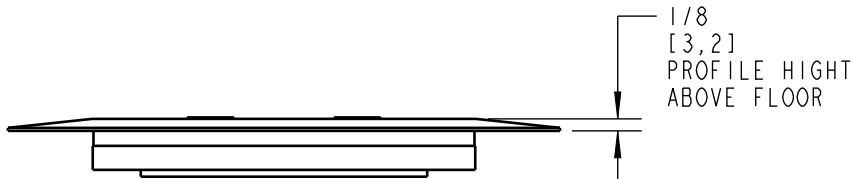
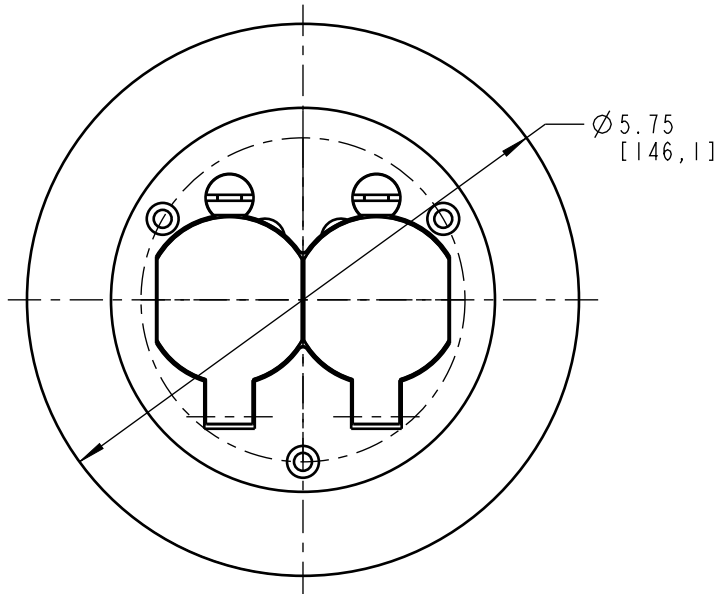
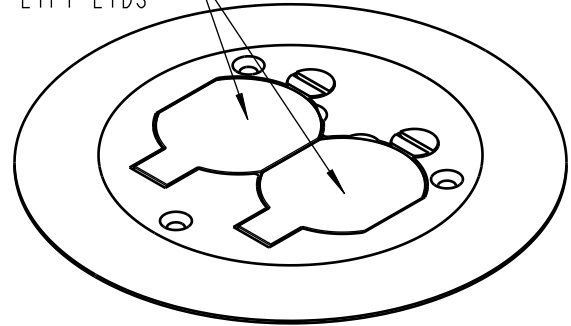


CATALOG NUMBERS:
P 60 CACP
P60CACP-AL

HINGED DUPLEX
 LIFT LIDS



CATALOG NUMBERS	MATERIAL	FINISH
P 60 CACP	SOLID BRASS	BRASS
P 60 CACP AL	ALUMINUM	ALUMINUM

FEATURES:

1. FOR USE WITH 68P, 68 AND 600 SERIES FLOOR BOXES
2. AVAILABLE IN SOLID BRASS OR ALUMINUM
3. FURNISHED WITH MATCHING 8-32 X 1" SCREWS

GENERAL NOTES		 A Member of the ABB Group			
1. ALL DIMENSIONS ARE FOR REFERENCE ONLY. 2. DIMENSIONS IN BRACKETS [] ARE IN METRIC UNITS.					
REVISIONS		ORIGINAL PROJECT NO / ECN NO	SHEET NO:	REV. NO:	DRAWING NO:
A	SEE ECN (****) FOR APPROVAL SIGNATURES & RELEASE DATE. PROJECT NO: ****	003V001056 / ECN000083908	1 OF 1	A	WSD-002606