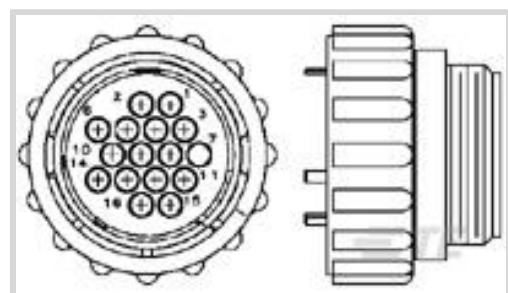




Connectors > Power Connectors > Circular Power > Circular Power Connectors



Connector Product Type: **Housing**

Operating Voltage: **600 VDC**

Connector System: **Wire-to-Wire**

Number of Positions: **16**

Sealable: **No**

Features

Product Type Features

Connector Product Type	Housing
Connector System	Wire-to-Wire
Sealable	No
Connector & Contact Terminates To	Wire & Cable
Connector & Housing Type	Plug
Circular Connector Shell Type	All Plastic

Configuration Features

Reverse Numbering	Without
Number of Positions	16
Number of Power Positions	0
Keying	A
Number of Signal Positions	16

Electrical Characteristics

Operating Voltage	600 VAC
-------------------	---------

Contact Features

Reverse Gender	No
Contact Type	Socket
Contact Protection	With



Mechanical Attachment

Screw & Hole Thread Size	15/16-20 UNEF-2A
Connector Mounting Type	Cable Mount (Free-Hanging)
Mating Alignment	With
Mating Retention	With
Panel Mount Feature	Without
Mating Alignment Type	Keyed
Mating Retention Type	Threaded Coupling

Housing Features

Body Orientation	Straight
Housing Color	Black
Housing Material	Thermoplastic
Circular Connector Shell Size	17

Usage Conditions

Operating Temperature Range	-55 – 105 °C[-67 – 221 °F]
Fluid Resistance	None

Operation/Application

Circuit Application	Power & Signal
Shielded	No

Industry Standards

UL Flammability Rating	UL 94V-0
VDE Tested	No

Packaging Features

Packaging Method	Bag
Packaging Quantity	100

Product Compliance

[For compliance documentation, visit the product page on TE.com>](#)

EU RoHS Directive 2011/65/EU	Compliant
EU ELV Directive 2000/53/EC	Compliant
China RoHS 2 Directive MIIT Order No 32, 2016	No Restricted Materials Above Threshold
EU REACH Regulation (EC) No. 1907/2006	Current ECHA Candidate List: JUN 2020 (209)



Candidate List Declared Against: JUN 2016 (169)

Does not contain REACH SVHC

Halogen Content

Not Yet Reviewed for halogen content

Solder Process Capability

Not applicable for solder process capability

Product Compliance Disclaimer

This information is provided based on reasonable inquiry of our suppliers and represents our current actual knowledge based on the information they provided. This information is subject to change. The part numbers that TE has identified as EU RoHS compliant have a maximum concentration of 0.1% by weight in homogenous materials for lead, hexavalent chromium, mercury, PBB, PBDE, DBP, BBP, DEHP, DIBP, and 0.01% for cadmium, or qualify for an exemption to these limits as defined in the Annexes of Directive 2011/65/EU (RoHS2). Finished electrical and electronic equipment products will be CE marked as required by Directive 2011/65/EU. Components may not be CE marked. Additionally, the part numbers that TE has identified as EU ELV compliant have a maximum concentration of 0.1% by weight in homogenous materials for lead, hexavalent chromium, and mercury, and 0.01% for cadmium, or qualify for an exemption to these limits as defined in the Annexes of Directive 2000/53/EC (ELV). Regarding the REACH Regulations, TE's information on SVHC in articles for this part number is still based on the European Chemical Agency (ECHA) 'Guidance on requirements for substances in articles' (Version: 2, April 2011), applying the 0.1% weight on weight concentration threshold at the finished product level. TE is aware of the European Court of Justice ruling of September 10th, 2015 also known as O5A (Once An Article Always An Article) stating that, in case of 'complex object', the threshold for a SVHC must be applied to both the product as a whole and simultaneously to each of the articles forming part of its composition. TE has evaluated this ruling based on the new ECHA "Guidance on requirements for substances in articles" (June 2017, version 4.0) and will be updating its statements accordingly.

Compatible Parts



TE Model / Part # CAT-AM71-C83998J
CPC SERIES 1



TE Model / Part # CAT-AM71-C83998BB
CPC SERIES 3



TE Model / Part # CAT-AM71-C83998AA
CPC SERIES 6 TWO-PIECE



TE Model / Part # 206036-3
RECEPT,SZ 17-16,CPC



TE Model / Part # 206036-1
RECEPT,SZ 17-16 CPC



TE Model / Part # 796404-1
CPC POSTED RCPT,17-16,R/A



TE Model / Part # CAT-AM71-C83998F
CPC SERIES 1 POSTED



TE Model / Part # 206036-7
CPC RECPT,SZ 17-16,SMALL PACK

Also in the Series | [AMP CPC](#)



Circular Connector Adapters(7)



Circular Connector Boots & Strain Relief(6)



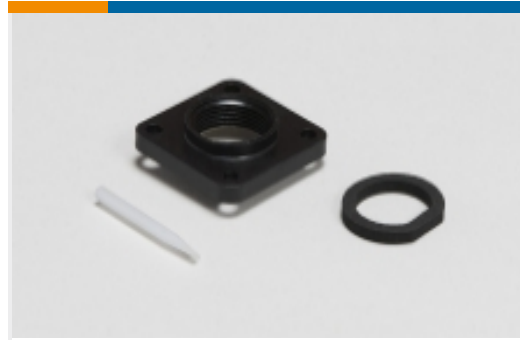
Circular Connector Caps & Covers(16)



Circular Connector Hardware(3)



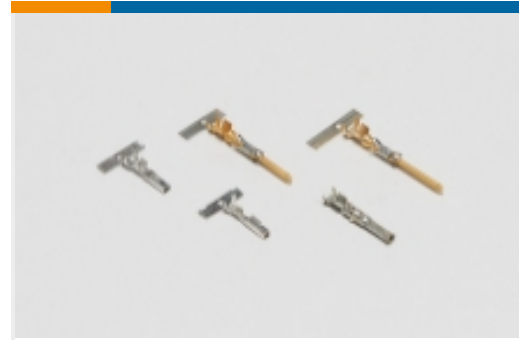
Circular Connector Keying Plugs(2)



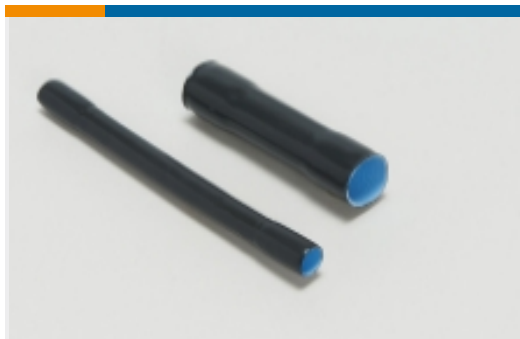
Circular Connector Seals(35)



Circular Power Connectors(513)



Power Contacts(5)



Sealing & Repair Sleeves(2)



Unscreened Circular Connector Backshells & Clamps(56)

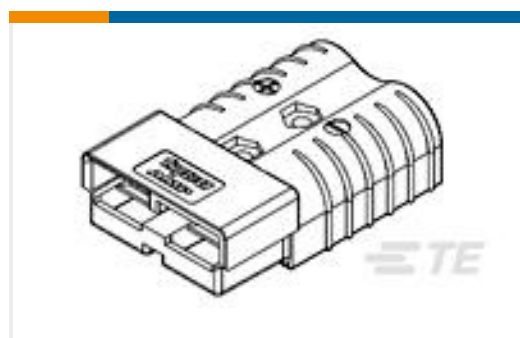
Customers Also Bought



TE Model / Part #66564-6
III+ PIN,24-20,TIN-LEAD,STRIP



TE Model / Part #1-331420-1
BODY SOLIS RING 4HD 3/8



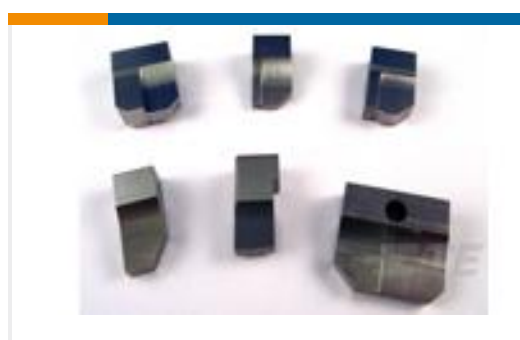
TE Model / Part #1604050-5
350A HOUSING SUB-ASSY,BLUE



TE Model / Part #63635-1
FASTON 187 FLAG 14-20AWG TPBR



TE Model / Part #160557-2
FF 312 REC TERMINAL 20-15 AWG
TPBR



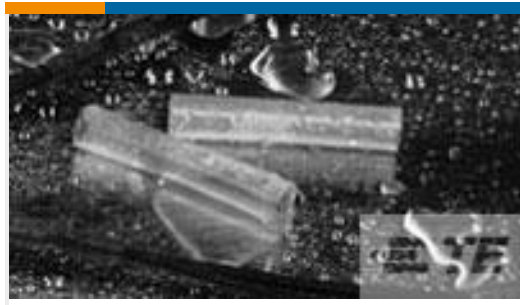
TE Model / Part #5-683403-6
ANVIL, COMB.



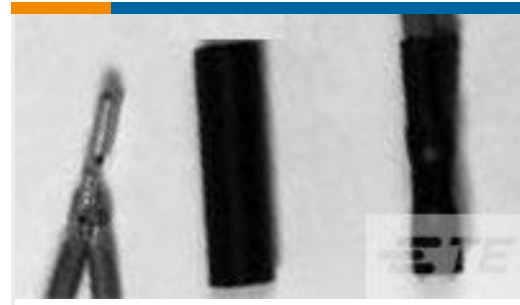
TE Model / Part #521598-2
ULTRA-POD 187 ASY REC 22-18 TPBR



TE Model / Part #CM1842-000
VERSAFIT-1/2-0-16IN



TE Model / Part #364171-000
ES1000-NO.2-B9-X-100MM



TE Model / Part #5202066047
RT-3-NO.1-0-1.25IN

Documents

Product Drawings

[CPC PLUG ASSEMBLY SZ 17-16](#)

English

CAD Files

[3D PDF](#)

3D

Customer View Model

[ENG_CVM_CVM_206037-3_R.2d_dxf.zip](#)

English

Customer View Model

[ENG_CVM_CVM_206037-3_R.3d_igs.zip](#)

English

Customer View Model

[ENG_CVM_CVM_206037-3_R.3d_stp.zip](#)

English

By downloading the CAD file I accept and agree to the [Terms and Conditions](#) of use.

Product Specifications

[Application Specification](#)

English

Agency Approvals

[UL Report](#)

English