

2306130-1 ✓ ACTIVE

LUMAWISE | LUMAWISE Endurance N

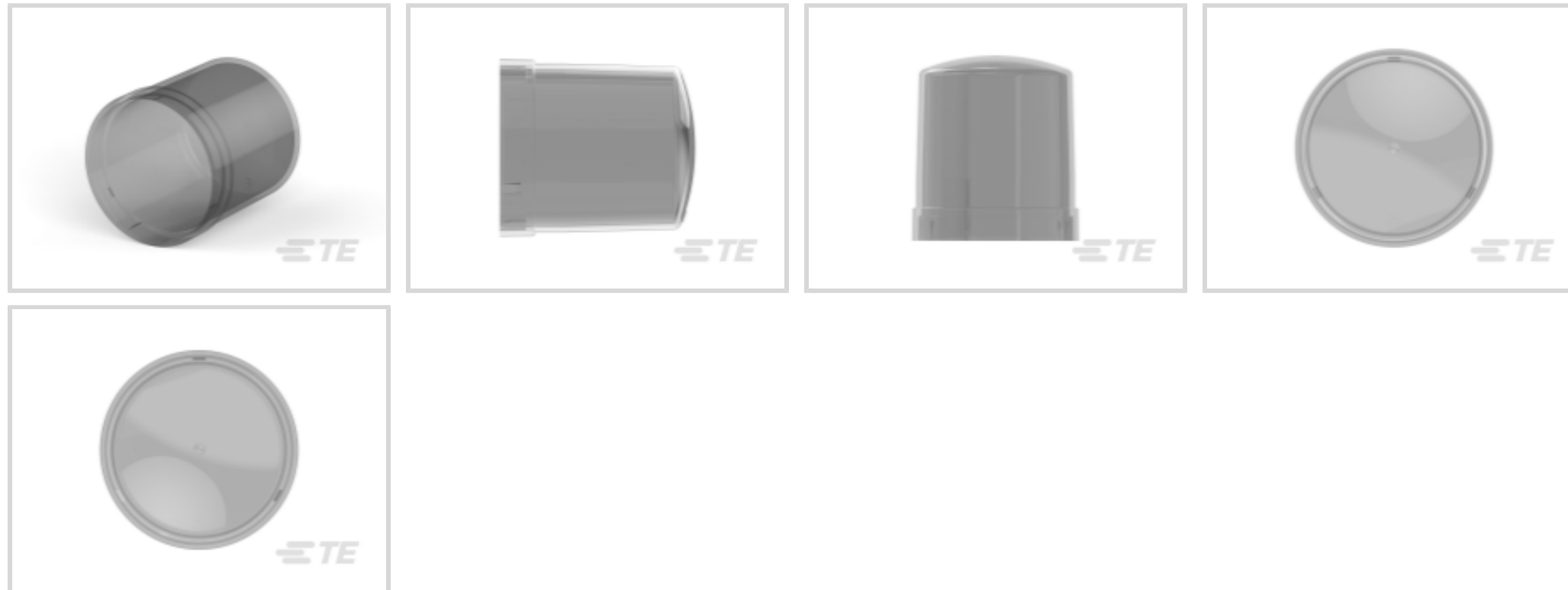
TE Internal #: 2306130-1

LUMAWISE Endurance N, NEMA/ANSI Street Light Controls,  
Connector, Gray Housing Color, ANSI, Sleeve Compatible / Not  
Vented, Sealable

[View on TE.com >](#)



[Connectors](#) > [Lighting Connectors](#) > [Solid State Lighting](#) > [NEMA/ANSI Street Light Controls](#) > [PHOTO CONTROL COVER](#)



Lighting Product Type: **Connector**

Housing Color: **Gray**

Agency/Standard: **ANSI**

Lighting Connector Features Included: **Not Vented, Sleeve Compatible**

Sealable: **Yes**

[All PHOTO CONTROL COVER \(10\)](#)

## Features

### Product Type Features

Lighting Product Type	Connector
Sealable	Yes

### Configuration Features

Lighting Connector Features Included	Not Vented, Sleeve Compatible
--------------------------------------	-------------------------------

### Housing Features

Housing Color	Gray
---------------	------

### Dimensions

Product Diameter	81 mm
------------------	-------

### Industry Standards

Agency/Standard	ANSI
-----------------	------

## Product Compliance






[For compliance documentation, visit the product page on TE.com>](#)

EU RoHS Directive 2011/65/EU	Compliant
EU ELV Directive 2000/53/EC	Compliant
China RoHS 2 Directive MIIT Order No 32, 2016	No Restricted Materials Above Threshold
EU REACH Regulation (EC) No. 1907/2006	Current ECHA Candidate List: JUN 2020 (209) Candidate List Declared Against: JUL 2019 (201) Does not contain REACH SVHC
Halogen Content	Low Halogen - Br, Cl, F, I < 900 ppm per homogenous material. Also BFR/CFR/PVC Free
Solder Process Capability	Not applicable for solder process capability

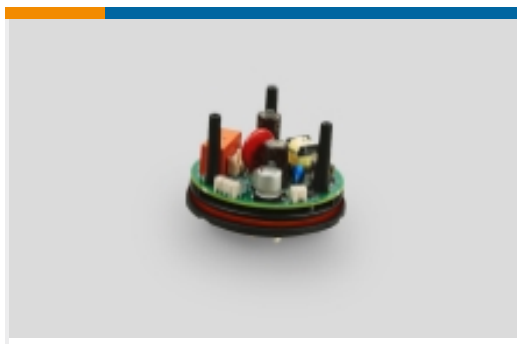
Product Compliance Disclaimer

This information is provided based on reasonable inquiry of our suppliers and represents our current actual knowledge based on the information they provided. This information is subject to change. The part numbers that TE has identified as EU RoHS compliant have a maximum concentration of 0.1% by weight in homogenous materials for lead, hexavalent chromium, mercury, PBB, PBDE, DBP, BBP, DEHP, DIBP, and 0.01% for cadmium, or qualify for an exemption to these limits as defined in the Annexes of Directive 2011/65/EU (RoHS2). Finished electrical and electronic equipment products will be CE marked as required by Directive 2011/65/EU. Components may not be CE marked. Additionally, the part numbers that TE has identified as EU ELV compliant have a maximum concentration of 0.1% by weight in homogenous materials for lead, hexavalent chromium, and mercury, and 0.01% for cadmium, or qualify for an exemption to these limits as defined in the Annexes of Directive 2000/53/EC (ELV). Regarding the REACH Regulation, the information TE provides on SVHC in articles for this part number is based on the latest European Chemicals Agency (ECHA) 'Guidance on requirements for substances in articles' posted at this URL: <https://echa.europa.eu/guidance-documents/guidance-on-reach>

### Compatible Parts

 <p>TE Model / Part # CAT-ST833-P5663A PHOTO CONTROL BASE</p>	 <p>TE Model / Part # 2336396-2 ASSEMBLY, LIGHT CONTROLLER BASE, W/VENT</p>	 <p>TE Model / Part # 1-2336396-2 ASSEMBLY, LIGHT CONTROLLER BASE, W/VENT</p>
--	--	--

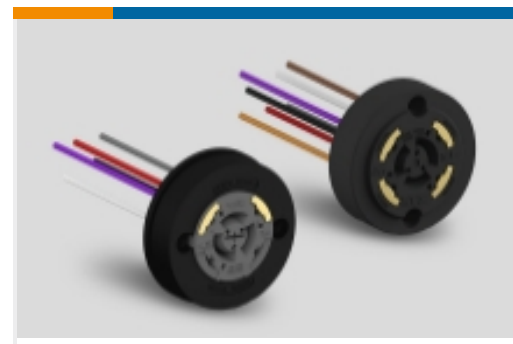
### Also in the Series | LUMAWISE Endurance N



NEMA Base AC/DC Power Management(6)

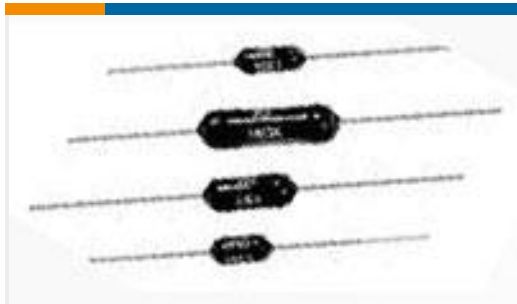


NEMA/ANSI Street Light Controls(34)



NEMA/ANSI Street Light Receptacles (27)

## Customers Also Bought



TE Model / Part #9-1879627-5  
H4P 82K 1% 100PPM



TE Model / Part #2318043-1  
CABLE ASSEMBLY, EB, 7 POS MINICT



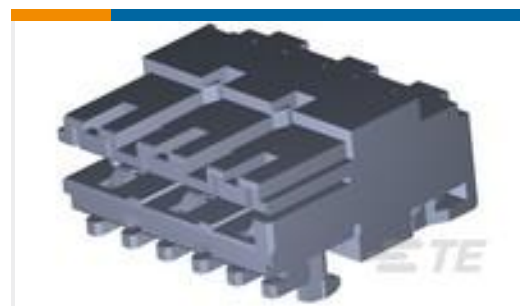
TE Model / Part #2318043-2  
CABLE ASSEMBLY, EB, 3 POS MINICT



TE Model / Part #1-2213819-0  
6X6 ILL TACT SMT 100GF HI PURE GREEN



TE Model / Part #2314786-1  
LUMAWISE N ENHANCED BASE, FM ON, ZC YES



TE Model / Part #8-1740533-3  
AMP DUOPLUG POW CONNECTOR



TE Model / Part #8-1419125-5  
SDT-S-106LMR,000

## Documents

### Product Drawings

COVER, LIGHT CONTROLLER, 81MM DIA., MED

English

### CAD Files

3D PDF

3D

Customer View Model

[ENG\\_CVM\\_CVM\\_2306130-1\\_D.2d\\_dxf.zip](#)

English

Customer View Model

[ENG\\_CVM\\_CVM\\_2306130-1\\_D.3d\\_igs.zip](#)

English

Customer View Model

[ENG\\_CVM\\_CVM\\_2306130-1\\_D.3d\\_stp.zip](#)

English

By downloading the CAD file I accept and agree to the [Terms and Conditions](#) of use.



---

### Datasheets & Catalog Pages

[LUMAWISE STREET LIGHT DIMMING AND CONTROL QUICK REFERENCE GUIDE](#)

English

[LUMAWISE ENDURANCE N CONTROL BASE, SLEEVE AND COVER](#)

English

[LUMAWISE ENDURANCE N CONTROL BASE, SLEEVE AND COVER](#)

---

### Product Specifications

[Application Specification](#)

English

---

### Agency Approvals

[Dimmable Photocontrol CB Test Report](#)

English

[Dimmable Photocontrol CB Certificate](#)

English