



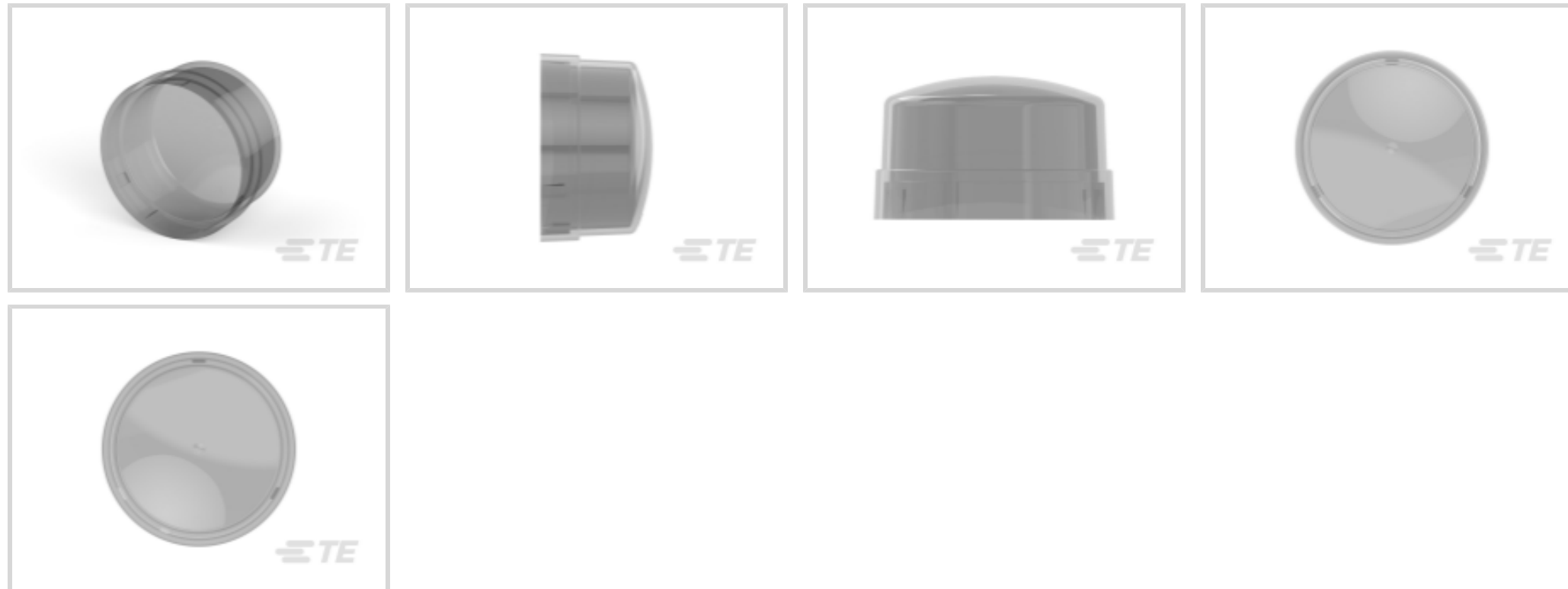
LUMAWISE | LUMAWISE Endurance N

TE Internal #: 2306128-1

LUMAWISE Endurance N, NEMA/ANSI Street Light Controls, Connector, Gray Housing Color, ANSI, Not Vented / Sleeve Compatible, Sealable

[View on TE.com >](#)

Connectors > Lighting Connectors > Solid State Lighting > NEMA/ANSI Street Light Controls > PHOTO CONTROL COVER



Lighting Product Type: **Connector**

Housing Color: **Gray**

Agency/Standard: **ANSI**

Lighting Connector Features Included: **Not Vented, Sleeve Compatible**

Sealable: **Yes**

[All PHOTO CONTROL COVER \(10\)](#)

Features

Product Type Features

Lighting Product Type	Connector
Sealable	Yes

Configuration Features

Lighting Connector Features Included	Not Vented, Sleeve Compatible
--------------------------------------	-------------------------------

Housing Features

Housing Color	Gray
---------------	------

Dimensions

Product Diameter	76 mm
------------------	-------

Industry Standards

Agency/Standard	ANSI
-----------------	------

Product Compliance










[For compliance documentation, visit the product page on TE.com>](#)

EU RoHS Directive 2011/65/EU	Compliant
EU ELV Directive 2000/53/EC	Compliant
China RoHS 2 Directive MIIT Order No 32, 2016	No Restricted Materials Above Threshold
EU REACH Regulation (EC) No. 1907/2006	Current ECHA Candidate List: JUN 2020 (209) Candidate List Declared Against: JAN 2020 (205) Does not contain REACH SVHC
Halogen Content	Low Halogen - Br, Cl, F, I < 900 ppm per homogenous material. Also BFR/CFR/PVC Free
Solder Process Capability	Not applicable for solder process capability

Product Compliance Disclaimer

This information is provided based on reasonable inquiry of our suppliers and represents our current actual knowledge based on the information they provided. This information is subject to change. The part numbers that TE has identified as EU RoHS compliant have a maximum concentration of 0.1% by weight in homogenous materials for lead, hexavalent chromium, mercury, PBB, PBDE, DBP, BBP, DEHP, DIBP, and 0.01% for cadmium, or qualify for an exemption to these limits as defined in the Annexes of Directive 2011/65/EU (RoHS2). Finished electrical and electronic equipment products will be CE marked as required by Directive 2011/65/EU. Components may not be CE marked. Additionally, the part numbers that TE has identified as EU ELV compliant have a maximum concentration of 0.1% by weight in homogenous materials for lead, hexavalent chromium, and mercury, and 0.01% for cadmium, or qualify for an exemption to these limits as defined in the Annexes of Directive 2000/53/EC (ELV). Regarding the REACH Regulation, the information TE provides on SVHC in articles for this part number is based on the latest European Chemicals Agency (ECHA) 'Guidance on requirements for substances in articles' posted at this URL: <https://echa.europa.eu/guidance-documents/guidance-on-reach>

Compatible Parts

 <p>TE Model / Part # CAT-ST833-P5663A PHOTO CONTROL BASE</p>	 <p>TE Model / Part # 1-2336396-1 ASSEMBLY, LIGHT CONTROLLER BASE, W/VENT</p>	 <p>TE Model / Part # 2336396-1 ASSEMBLY, LIGHT CONTROLLER BASE, W/VENT</p>	 <p>TE Model / Part # 1-2213730-1 LIGHT CONTROL BASE ASSY 76MM 7 POSITION</p>
 <p>TE Model / Part # 1-2213871-3 LIGHT CONTROLLER BASE ASSY, 76MM DIA, 3POS</p>	 <p>TE Model / Part # 1-2325661-1 LUMAWISE ENDURANCE N SHRTNG CAP BASE VENT</p>	 <p>TE Model / Part # 2325661-1 LUMAWISE ENDURANCE N SHRTNG CAP BASE ASM</p>	

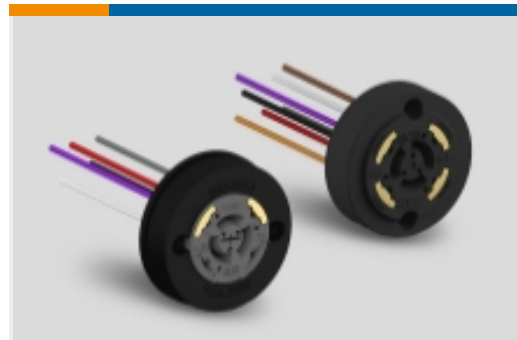
Also in the Series | LUMAWISE Endurance N



NEMA Base AC/DC Power Management(6)



NEMA/ANSI Street Light Controls(34)



NEMA/ANSI Street Light Receptacles (27)

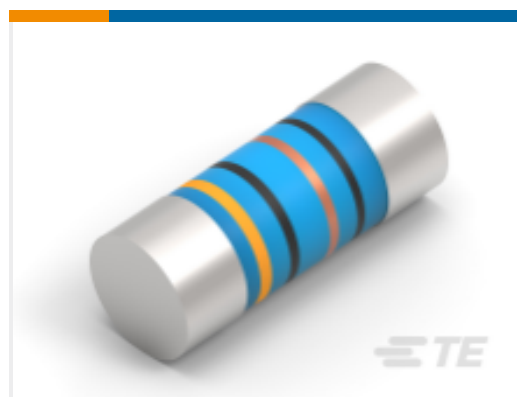
Customers Also Bought



TE Model / Part #3-2176330-5
CRGP 2010 6K8 1%



TE Model / Part #2213469-1
GASKET, PHOTOCELL RECEPTACLE



TE Model / Part #6-2176314-7
MELF SMA_A 47K 1% 50PPM 0102 0.3 W



TE Model / Part #2311664-1
COVER, 76MM DIAMETER, 75MM HEIGHT



TE Model / Part #2213899-4
RCPT ASSY,DIMMABLE
PHOTOCONTROL,105C,3/4

Documents

Product Drawings

COVER, LIGHT CONTROLLER, 76MM DIA,SHORT

English

CAD Files

3D PDF

3D

Customer View Model

[ENG_CVM_CVM_2306128-1_A.2d_dxf.zip](#)

English

Customer View Model

[ENG_CVM_CVM_2306128-1_A.3d_igs.zip](#)

English

Customer View Model

[ENG_CVM_CVM_2306128-1_A.3d_stp.zip](#)



English

By downloading the CAD file I accept and agree to the [Terms and Conditions](#) of use.

Datasheets & Catalog Pages

[LUMAWISE STREET LIGHT DIMMING AND CONTROL QUICK REFERENCE GUIDE](#)

English

[LUMAWISE ENDURANCE N CONTROL BASE, SLEEVE AND COVER](#)

English

[LUMAWISE ENDURANCE N CONTROL BASE, SLEEVE AND COVER](#)

Product Specifications

[Application Specification](#)

English

Agency Approvals

[Dimmable Photocontrol CB Test Report](#)

English

[Dimmable Photocontrol CB Certificate](#)

English