



Passive Components > Resistors > Chassis Mount Resistors



Resistor Type: **Power Resistor**

Dimensions: **122 x 47.5 x 26 mm**

Number of Terminations: **2**

Packaging Method: **Loose Piece - Tray**

Tolerance: **5%**

Features

Product Type Features

| | |
|---------------|----------------|
| Resistor Type | Power Resistor |
| Element Type | Wirewound |

Configuration Features

| | |
|---------------------|---|
| Number of Resistors | 1 |
|---------------------|---|

Electrical Characteristics

| | |
|------------------|-------------------|
| Voltage Rating | 2500 VDC |
| Tolerance | 5% |
| Resistance Class | Up to 1k Ω |
| Resistance | 125 Ω |
| Power Rating | 150 W |

Body Features

| | |
|-----------|--------------|
| Lead Type | Fixed Leaded |
|-----------|--------------|

Termination Features

| | |
|------------------------|------------|
| Number of Terminations | 2 |
| Termination Type | Solder Lug |

Mechanical Attachment

| | |
|-------------|---------------|
| Mount Style | Chassis Mount |
|-------------|---------------|

Dimensions



| | |
|------------|--------------------|
| Dimensions | 122 x 47.5 x 26 mm |
|------------|--------------------|

Usage Conditions

| | |
|-------------------------|------------|
| Temperature Coefficient | ±30 ppm/°C |
|-------------------------|------------|

Packaging Features

| | |
|------------------|--------------------|
| Packaging Method | Loose Piece - Tray |
|------------------|--------------------|

Product Compliance

[For compliance documentation, visit the product page on TE.com>](#)

| | |
|---|---|
| EU RoHS Directive 2011/65/EU | Compliant |
| EU ELV Directive 2000/53/EC | Compliant |
| China RoHS 2 Directive MIIT Order No 32, 2016 | No Restricted Materials Above Threshold |
| EU REACH Regulation (EC) No. 1907/2006 | Current ECHA Candidate List: JUN 2020 (209) Candidate List Declared Against: JUN 2016 (169) Does not contain REACH SVHC |
| Halogen Content | Low Halogen - Br, Cl, F, I < 900 ppm per homogenous material. Also BFR/CFR/PVC Free |
| Solder Process Capability | Not reviewed for solder process capability |

Product Compliance Disclaimer

This information is provided based on reasonable inquiry of our suppliers and represents our current actual knowledge based on the information they provided. This information is subject to change. The part numbers that TE has identified as EU RoHS compliant have a maximum concentration of 0.1% by weight in homogenous materials for lead, hexavalent chromium, mercury, PBB, PBDE, DBP, BBP, DEHP, DIBP, and 0.01% for cadmium, or qualify for an exemption to these limits as defined in the Annexes of Directive 2011/65/EU (RoHS2). Finished electrical and electronic equipment products will be CE marked as required by Directive 2011/65/EU. Components may not be CE marked. Additionally, the part numbers that TE has identified as EU ELV compliant have a maximum concentration of 0.1% by weight in homogenous materials for lead, hexavalent chromium, and mercury, and 0.01% for cadmium, or qualify for an exemption to these limits as defined in the Annexes of Directive 2000/53/EC (ELV). Regarding the REACH Regulation, the information TE provides on SVHC in articles for this part number is based on the latest European Chemicals Agency (ECHA) 'Guidance on requirements for substances in articles' posted at this URL: <https://echa.europa.eu/guidance-documents/guidance-on-reach>

Compatible Parts



TE Model / Part # 1630019-1
HSC200 100R 5%



TE Model / Part # 1630027-1
HSC300 100R 5%



TE Model / Part # 1630012-1
HSC150 100R 5%



TE Model / Part # 1-1625984-1
HSA50 15R 5%



TE Model / Part # 1625999-3
HSC100 10R 5%

Also in the Series | CGS HS



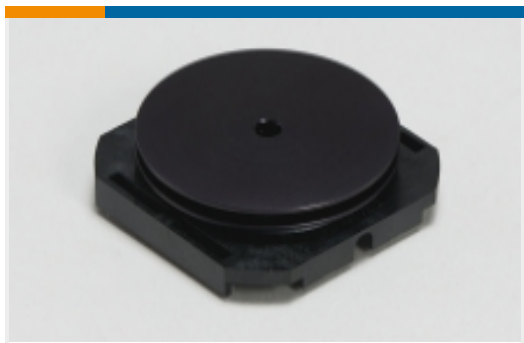
Automotive, Truck, Bus, & Off-Road Housings(1)



Chassis Mount Resistors(533)



FFC Connectors(1)



Heat Sinks(18)



High Speed Backplane Connectors(4)



RJ45 Connectors(1)

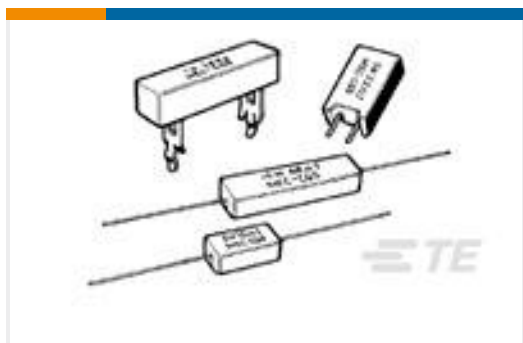
Customers Also Bought



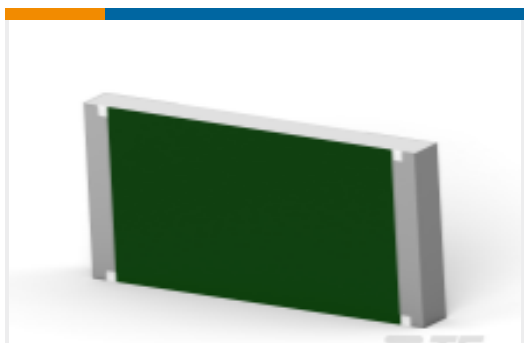
TE Model / Part #1-1676123-5
1/2W SM M/OX 5% 3R3



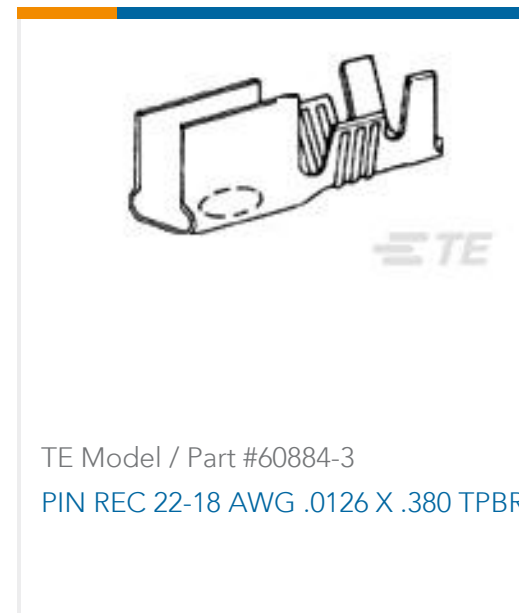
TE Model / Part #1-2329328-7
PB OFF/ON HC RED M4 TERM. IP68



TE Model / Part #1879009-3
SQB30 1R5 5% 6.35MM FASTON



TE Model / Part #7-2176404-6
3550 2R7 5%



Documents

Product Drawings

[HSC150 125R 5%](#)

English

CAD Files

[3D PDF](#)

3D

Customer View Model

[ENG_CVM_CVM_4-1630012-1_S.2d_dxf.zip](#)

English

Customer View Model

[ENG_CVM_CVM_4-1630012-1_S.3d_igs.zip](#)

English

Customer View Model

[ENG_CVM_CVM_4-1630012-1_S.3d_stp.zip](#)

English

By downloading the CAD file I accept and agree to the [Terms and Conditions](#) of use.

Datasheets & Catalog Pages

[4-1773460-6_RESISTIVE_SOLUTIONS_RAIL](#)

English

[Aluminium Housed Power Resistors - Type HS Series](#)

English

[8-1773459-4_POWER_FILTERING_AND_RESISTIVE_SOLUTIONS_FOR_ELEVATORS_AND_ESCALATORS](#)

English