



Passive Components > Resistors > Chassis Mount Resistors



Resistor Type: **Power Resistor**

Dimensions: **51 x 28 x 15 mm**

Number of Terminations: **2**

Packaging Method: **Loose Piece - Tray**

Tolerance: **3%**

Features

Product Type Features

Element Material	Metal Clad
Resistor Type	Power Resistor
Element Type	Wirewound

Configuration Features

Number of Resistors	1
---------------------	---

Electrical Characteristics

Voltage Rating	500 VDC
Tolerance	3%
Resistance Class	Up to 1k Ω
Resistance	6.2 Ω
Power Rating	25 W

Body Features

Lead Type	Fixed Leaded
-----------	--------------

Termination Features

Number of Terminations	2
Termination Type	Solder Lug

Mechanical Attachment

Mount Style	Chassis Mount
-------------	---------------



Dimensions

Dimensions	51 x 28 x 15 mm
------------	-----------------

Usage Conditions

Temperature Coefficient	±50 ppm/°C
-------------------------	------------

Packaging Features

Packaging Method	Loose Piece - Tray
------------------	--------------------

Product Compliance

[For compliance documentation, visit the product page on TE.com>](#)

EU RoHS Directive 2011/65/EU	Compliant
EU ELV Directive 2000/53/EC	Compliant
China RoHS 2 Directive MIIT Order No 32, 2016	No Restricted Materials Above Threshold
EU REACH Regulation (EC) No. 1907/2006	Current ECHA Candidate List: JUN 2020 (209) Candidate List Declared Against: JUN 2016 (169) Does not contain REACH SVHC
Halogen Content	Low Halogen - Br, Cl, F, I < 900 ppm per homogenous material. Also BFR/CFR/PVC Free
Solder Process Capability	Hand solderable with lead free solder

Product Compliance Disclaimer

This information is provided based on reasonable inquiry of our suppliers and represents our current actual knowledge based on the information they provided. This information is subject to change. The part numbers that TE has identified as EU RoHS compliant have a maximum concentration of 0.1% by weight in homogenous materials for lead, hexavalent chromium, mercury, PBB, PBDE, DBP, BBP, DEHP, DIBP, and 0.01% for cadmium, or qualify for an exemption to these limits as defined in the Annexes of Directive 2011/65/EU (RoHS2). Finished electrical and electronic equipment products will be CE marked as required by Directive 2011/65/EU. Components may not be CE marked. Additionally, the part numbers that TE has identified as EU ELV compliant have a maximum concentration of 0.1% by weight in homogenous materials for lead, hexavalent chromium, and mercury, and 0.01% for cadmium, or qualify for an exemption to these limits as defined in the Annexes of Directive 2000/53/EC (ELV). Regarding the REACH Regulation, the information TE provides on SVHC in articles for this part number is based on the latest European Chemicals Agency (ECHA) 'Guidance on requirements for substances in articles' posted at this URL: <https://echa.europa.eu/guidance-documents/guidance-on-reach>

Compatible Parts



TE Model / Part # 1630019-1
HSC200 100R 5%



TE Model / Part # 1630027-1
HSC300 100R 5%



TE Model / Part # 1630012-1
HSC150 100R 5%



TE Model / Part # 1-1625984-1
HSA50 15R 5%



TE Model / Part # 1625999-3
HSC100 10R 5%

Also in the Series | CGS HS



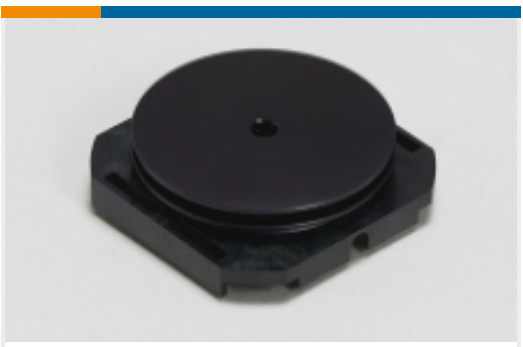
Automotive, Truck, Bus, & Off-Road Housings(1)



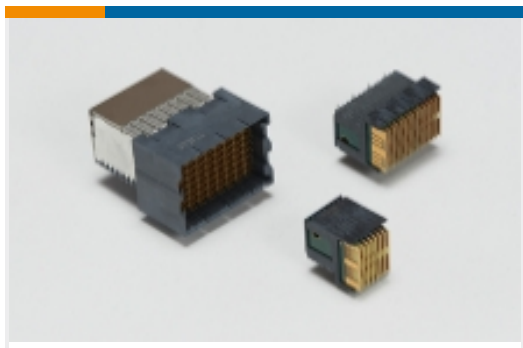
Chassis Mount Resistors(533)



FFC Connectors(1)



Heat Sinks(18)



High Speed Backplane Connectors(4)



RJ45 Connectors(1)

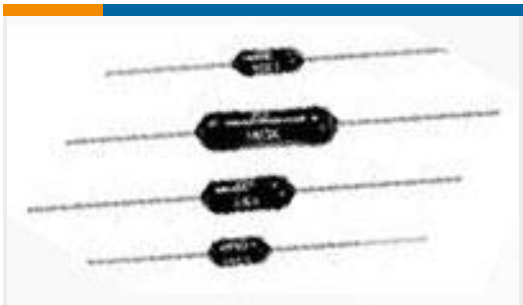
Customers Also Bought



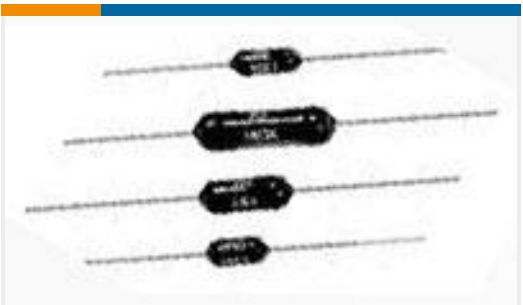
TE Model / Part #1625966-9
HSA10 15K 5%



TE Model / Part #1625999-7
HSC100 16R6 5%



TE Model / Part #6-1879627-0
H4P 3K0 1% 100PPM



TE Model / Part #9-1879627-5
H4P 82K 1% 100PPM



Documents

Product Drawings

[HSA25 6R2 3%](#)

English

CAD Files

[3D PDF](#)

3D

Customer View Model

[ENG_CVM_CVM_6-1625971-3_M.2d_dxf.zip](#)

English

Customer View Model

[ENG_CVM_CVM_6-1625971-3_M.3d_igs.zip](#)

English

Customer View Model

[ENG_CVM_CVM_6-1625971-3_M.3d_stp.zip](#)

English

By downloading the CAD file I accept and agree to the [Terms and Conditions](#) of use.

Datasheets & Catalog Pages

[4-1773460-6_RESISTIVE_SOLUTIONS_RAIL](#)

English

[1309350_PASSIVE_COMPONENT](#)

English

[Aluminium Housed Power Resistors - Type HS Series](#)

English

[8-1773459-4_POWER_FILTERING_AND_RESISTIVE_SOLUTIONS_FOR_ELEVATORS_AND_ESCALATORS](#)

English

HSA256R2E

CGS HS, Chassis Mount Resistors, Power Resistor, 51 x 28 x 15 mm, 2 Termination,
Loose Piece - Tray, 3% Tolerance, Wirewound

