

HDC34-18 ✓ ACTIVE

DEUTSCH | DEUTSCH HD, DEUTSCH HD30

TE Internal #: HDC34-18

TE Internal Description: DUST CAP, 18SZ, PLG, AL, LANYARD, HD30

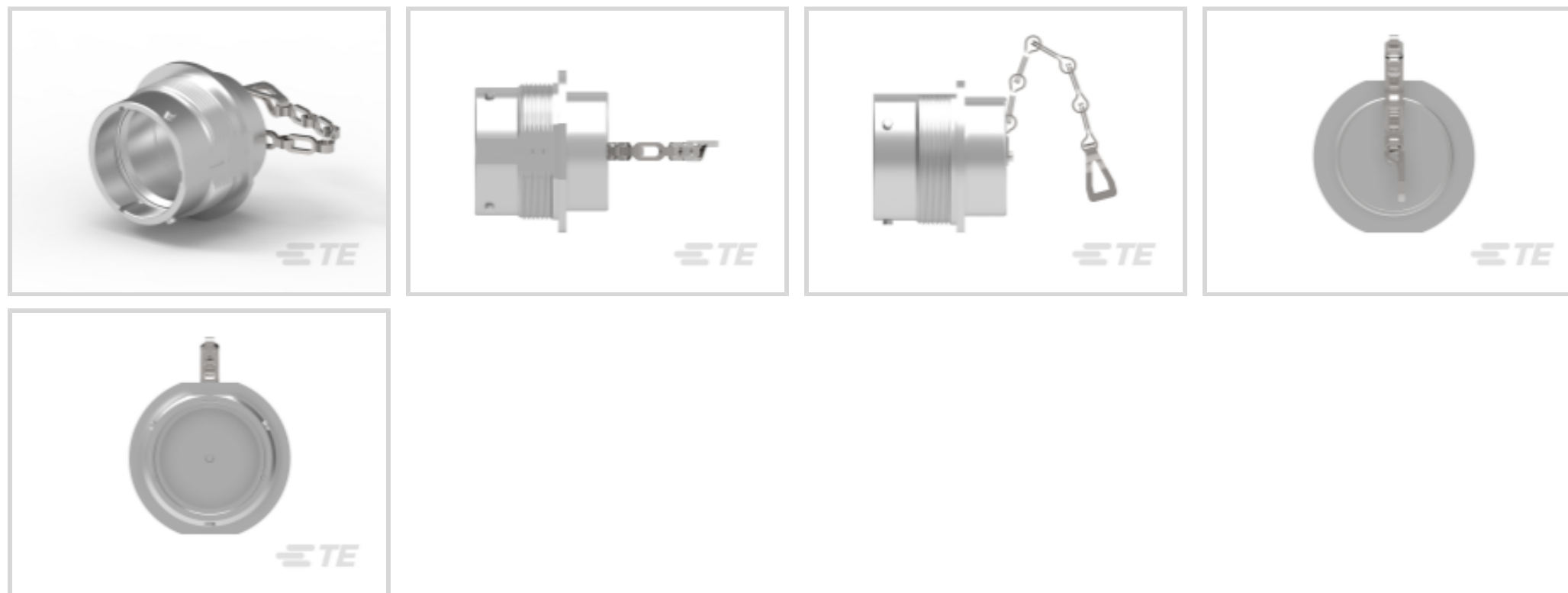
DEUTSCH HD30 PLUG PROTECTIVE CAPS

[View on TE.com >](#)



Connectors > Automotive, Truck, Bus, & Off-Road Connectors > Connector Accessories > Connector Caps & Covers >

DEUTSCH HD30 PLUG PROTECTIVE CAPS



Protection & Strain Relief Accessory Type: **Protective Cap**

Strain Relief: **Without**

Primary Product Color: **Silver**

Material: **Aluminum**

Connector System: **Wire-to-Wire**

[All DEUTSCH HD30 PLUG PROTECTIVE CAPS \(2\)](#)

Features

Product Type Features

Protection & Strain Relief Accessory Type	Protective Cap
Connector System	Wire-to-Wire

Body Features

Primary Product Color	Silver
Material	Aluminum

Mechanical Attachment

Strain Relief	Without
---------------	---------

Usage Conditions

Operating Temperature Range	-55 – 125 °C[-67 – 257 °F]
-----------------------------	----------------------------

Packaging Features

Packaging Method	Package
------------------	---------



Packaging Quantity 1

Other

Serviceable No

Product Compliance

[For compliance documentation, visit the product page on TE.com>](#)

EU RoHS Directive 2011/65/EU	Compliant
EU ELV Directive 2000/53/EC	Compliant
China RoHS 2 Directive MIIT Order No 32, 2016	No Restricted Materials Above Threshold
EU REACH Regulation (EC) No. 1907/2006	Current ECHA Candidate List: JUN 2020 (209) Candidate List Declared Against: JAN 2020 (205) Does not contain REACH SVHC
Halogen Content	Low Halogen - Br, Cl, F, I < 900 ppm per homogenous material. Also BFR/CFR/PVC Free
Solder Process Capability	Not reviewed for solder process capability

Product Compliance Disclaimer

This information is provided based on reasonable inquiry of our suppliers and represents our current actual knowledge based on the information they provided. This information is subject to change. The part numbers that TE has identified as EU RoHS compliant have a maximum concentration of 0.1% by weight in homogenous materials for lead, hexavalent chromium, mercury, PBB, PBDE, DBP, BBP, DEHP, DIBP, and 0.01% for cadmium, or qualify for an exemption to these limits as defined in the Annexes of Directive 2011/65/EU (RoHS2). Finished electrical and electronic equipment products will be CE marked as required by Directive 2011/65/EU. Components may not be CE marked. Additionally, the part numbers that TE has identified as EU ELV compliant have a maximum concentration of 0.1% by weight in homogenous materials for lead, hexavalent chromium, and mercury, and 0.01% for cadmium, or qualify for an exemption to these limits as defined in the Annexes of Directive 2000/53/EC (ELV). Regarding the REACH Regulation, the information TE provides on SVHC in articles for this part number is based on the latest European Chemicals Agency (ECHA) 'Guidance on requirements for substances in articles' posted at this URL: <https://echa.europa.eu/guidance-documents/guidance-on-reach>

Compatible Parts

TE Model / Part # CAT-H3930-CH8172
DEUTSCH HD30 HOUSINGS





TE Model / Part # HD3618-6SNC030-059
PLG, 6P, AL,N,CBLCLMPBT,DR,1256 BLKD,4,S

TE Model / Part # HD36-18-14PN-L005
PLG, 14P, AL, N, THD ADPT, NODRAIN,16,P

TE Model / Part # HD36-18-21SN-072
PLG, 21P, AL, N, THD ADPT, DRAIN, 20, S

<p>TE Model / Part # HD36-18-14SN-L005 PLG, 14P, AL, N, THD ADPT, NODRAIN,16,S</p>	<p>TE Model / Part # HD36-18-8SE-059 PLG, 8P, AL, E, CBL CLMP BT, DRAIN, 12,S</p>	<p>TE Model / Part # HD36-18-14SN-H001 PLG, 14P, AL, N, YEL CHROMATE, 16, S</p>	<p>TE Model / Part # HD36-18-6PN PLG, 6P, AL, N, 4/16, P</p>
<p>TE Model / Part # HD36-18-8PE-L006 PLG, 8P, AL, E, CBL CLMP BT, NODRAIN,12,P</p>	<p>TE Model / Part # HD36-18-14PE-C028 PLG, 14P, AL, E, PN BLKD, 16, P</p>	<p>TE Model / Part # HD36-18-14PE-C029 PLG, 14P, AL, E, HJPN BLKD, 16, P</p>	<p>TE Model / Part # HD36-18-14PN-C012 PLG, 14P, AL, N, JP BLKD, 16, P</p>
<p>TE Model / Part # HD36-18-14PN-L006 PLG, 14P, AL, N,CBL CLMP BT, NODRAIN,16,P</p>	<p>TE Model / Part # HD36-18-14PT PLG, 14P, AL, T, 16, P</p>	<p>TE Model / Part # HD36-18-14SN-C012 PLG, 14P, AL, N, JP BLKD, 16, S</p>	<p>TE Model / Part # HD36-18-14SN-C013 PLG, 14P, AL, N, BEGJLN BLKD, 16, S</p>
<p>TE Model / Part # HD36-18-14SN-C014 PLG, 14P, AL, N, E-P BLKD, 16, S</p>	<p>TE Model / Part # HD36-18-14ST-072 PLG, 14P, AL, T, THD ADPT, DRAIN, 16, S</p>	<p>TE Model / Part # HD36-18-14ST-L006 PLG, 14P, AL, T,CBL CLMP BT, NODRAIN,16,S</p>	<p>TE Model / Part # HD36-18-21PN-072 PLG, 21P, AL, N, THD ADPT, DRAIN, 20, P</p>

Also in the Series | **DEUTSCH HD**

			
<p>Automotive Connector Caps & Covers (44)</p>	<p>Automotive Seals & Cavity Plugs(8)</p>	<p>Automotive, Truck, Bus, & Off-Road Housings(634)</p>	<p>Insertion & Extraction Tools(12)</p>



Other Automotive Connector Accessories(12)

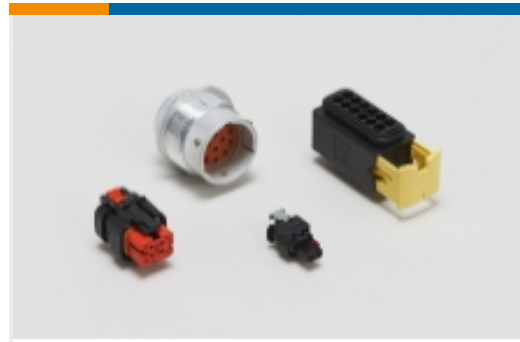
Also in the Series | DEUTSCH HD30



Automotive Connector Caps & Covers (13)



Automotive Seals & Cavity Plugs(8)



Automotive, Truck, Bus, & Off-Road Housings(326)

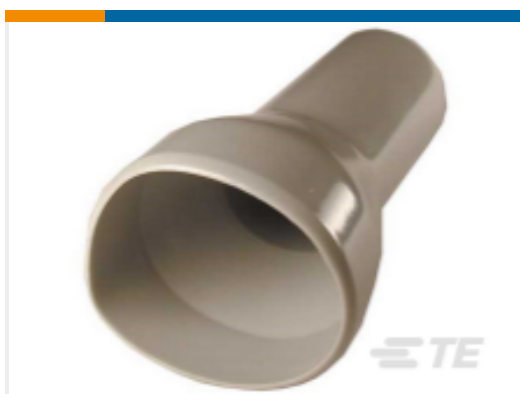


Insertion & Extraction Tools(1)



Other Automotive Connector Accessories(8)

Customers Also Bought



TE Model / Part #HD30-24BT
BOOT, 24SZ, ST, GRY

Documents

Product Drawings

DUST CAP, 18SZ, PLG, AL, LANYARD, HD30

English

CAD Files

3D PDF



3D

Customer View Model

[ENG_CVM_CVM_HDC34-18_99.2d_dxf.zip](#)

English

Customer View Model

[ENG_CVM_CVM_HDC34-18_99.3d_igs.zip](#)

English

Customer View Model

[ENG_CVM_CVM_HDC34-18_99.3d_stp.zip](#)

English

By downloading the CAD file I accept and agree to the [Terms and Conditions](#) of use.

Datasheets & Catalog Pages

[ICT Terminals and Connectors Catalogue](#)

English

[CONNECTOR SELECTOR](#)

English

Product Specifications

[Application Specification](#)

English

Product Environmental Compliance

[Product Compliance](#)

English

[Product Compliance](#)

English