

51864-3 ✓ ACTIVE



PIDG

TE Internal #: 51864-3

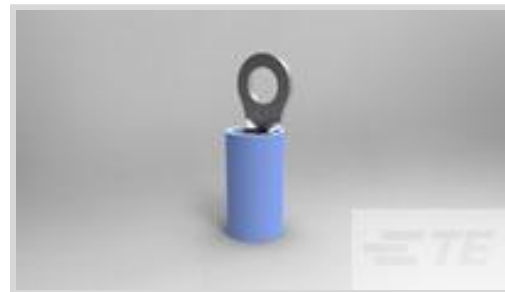
Rings & Spades, Ring Tongue, 16 – 14AWG Wire Size, 1.31 – 2.08

mm² Wire Size, 2050 – 5180CMA Wire Size, M3.5 / #6, Stud

Diameter 3.68 mm [.145 in]

[View on TE.com >](#)

Terminals & Splices > Rings & Spades > PIDG RING TONGUE TERMINALS



Terminal & Splice Type: **Ring Tongue**

Wire Size: **2050 – 5180 CMA**

Stud Size: **#6, M3.5**

[All PIDG RING TONGUE TERMINALS \(422\)](#)

Features

Product Type Features

Shape Description	RING-041
Stud Size	#6, M3.5
Barrel Type	Closed Barrel
Sealable	No
Insulated	Yes
Wire/Cable Type	Regular Wire
Support Style	Insulation Support

Configuration Features

Number of Holes	1
Terminal Angle	Straight

Electrical Characteristics

Voltage (Max)	300 V
---------------	-------

Body Features

Insulation Sleeve Color	Blue
Weight per Piece	.996 g
Stripe Color	Blue
Plating Material	Copper, Tin

Contact Features



Military Part Class	Class II
Terminal & Splice Type	Ring Tongue
Terminal Orientation	Offset

Mechanical Attachment

Wire Insulation Support	With
-------------------------	------

Dimensions

Wire Size	2050 – 5180 CMA
Stud Diameter	3.68 mm [.145 in]
Tongue Thickness	.79 mm [.031 in]
Overall Length	21.44 mm [.844 in]
Wire Insulation Diameter (Max)	3.81 mm [.15 in]
Wire Insulation Diameter	2.67 – 3.81 mm [.105 – .15 in]

Usage Conditions

Operating Temperature Range	105 °C [221 °F]
-----------------------------	-----------------

Operation/Application

Heavy Duty	No
------------	----

Industry Standards

Government Qualified	Yes
----------------------	-----

Packaging Features

Packaging Quantity	5000
Packaging Method	Tape Mounted

Product Compliance

[For compliance documentation, visit the product page on TE.com>](#)

EU RoHS Directive 2011/65/EU	Compliant
EU ELV Directive 2000/53/EC	Compliant
China RoHS 2 Directive MIIT Order No 32, 2016	No Restricted Materials Above Threshold
EU REACH Regulation (EC) No. 1907/2006	Current ECHA Candidate List: JUN 2020 (209) Candidate List Declared Against: JAN 2020 (205) Does not contain REACH SVHC
Halogen Content	Low Halogen - Br, Cl, F, I < 900 ppm per homogenous material. Also BFR/CFR/PVC

Free

Solder Process Capability

Not applicable for solder process capability

Product Compliance Disclaimer

This information is provided based on reasonable inquiry of our suppliers and represents our current actual knowledge based on the information they provided. This information is subject to change. The part numbers that TE has identified as EU RoHS compliant have a maximum concentration of 0.1% by weight in homogenous materials for lead, hexavalent chromium, mercury, PBB, PBDE, DBP, BBP, DEHP, DIBP, and 0.01% for cadmium, or qualify for an exemption to these limits as defined in the Annexes of Directive 2011/65/EU (RoHS2). Finished electrical and electronic equipment products will be CE marked as required by Directive 2011/65/EU. Components may not be CE marked. Additionally, the part numbers that TE has identified as EU ELV compliant have a maximum concentration of 0.1% by weight in homogenous materials for lead, hexavalent chromium, and mercury, and 0.01% for cadmium, or qualify for an exemption to these limits as defined in the Annexes of Directive 2000/53/EC (ELV). Regarding the REACH Regulation, the information TE provides on SVHC in articles for this part number is based on the latest European Chemicals Agency (ECHA) 'Guidance on requirements for substances in articles' posted at this URL: <https://echa.europa.eu/guidance-documents/guidance-on-reach>

Compatible Parts

TE Model / Part # 47387
DAHT PIDG 16-14 ASSY

TE Model / Part # 58423-1
DIE, RBY IS9252

TE Model / Part # 58433-3
PRO CR ASSY, RBY IS9252

TE Model / Part # 59824-1
TETRA-CRIMP HT ASSY

TE Model / Part # 47806-2
DIE PIDG 69365 46110 22-16

TE Model / Part # 47807-1
DIE PIDG 69100 16-14

TE Model / Part # 55823-1
RBY PRO CRIMPER KIT

TE Model / Part # 169404
CERTI-LOK DIE

Also in the Series | PIDG

Compression Connectors(17)

Crimp Terminal Housings(1)

Crimp Wire Pins, Tabs & Ferrules(41)

Knife Disconnects(11)



PCB Terminals(9)



Portable Crimp Tools(2)



Quick Disconnects(53)



Rings & Spades(862)

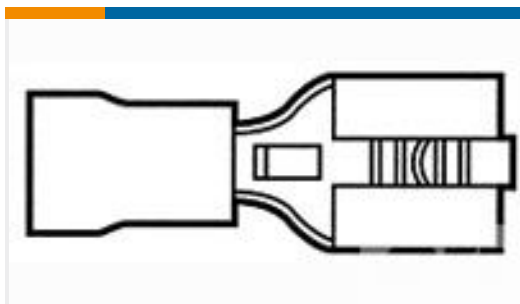


Special Purpose Terminals(1)

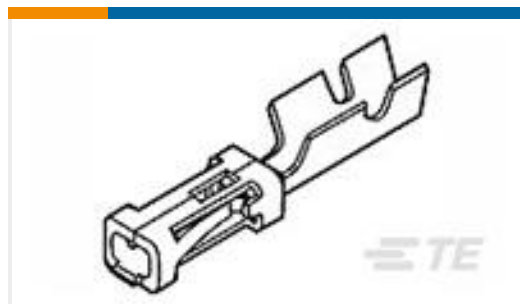


Splices(48)

Customers Also Bought



TE Model / Part #42844-3
RECEPT,PIDG FASTON 14-12 250



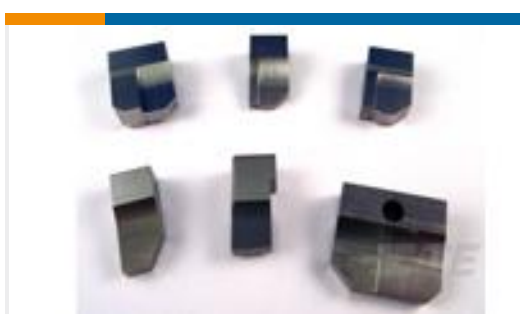
TE Model / Part #1-87756-2
MOD IV RECP PLTD 15 DPLX



TE Model / Part #456400-9
CRIMPER, WIRE .033 "F"



TE Model / Part #1969110-2
ULTRA-POD 250 ASSY REC 18-14
AWG TPBR



TE Model / Part #2-683452-8
ANVIL



TE Model / Part #456425-1
CRIMPER WIRE .140 F



TE Model / Part #680017-3
U-POD 9SAPR13OF250F G

Documents

Product Drawings

[TERMINAL,PIDG R 16-14 6](#)

English

CAD Files

[3D PDF](#)

[3D](#)

[Customer View Model](#)

[ENG_CVM_CVM_51864-3_AF.2d_dxf.zip](#)



English

Customer View Model

[ENG_CVM_CVM_51864-3_AF.3d_igs.zip](#)

English

Customer View Model

[ENG_CVM_CVM_51864-3_AF.3d_stp.zip](#)

English

By downloading the CAD file I accept and agree to the [Terms and Conditions](#) of use.

Product Specifications

[Application Specification](#)

English

Product Environmental Compliance

[TE Material Declaration](#)

English

Agency Approvals

[UL Report](#)

English