

T1500102000-000 ✓ ACTIVE

HDC | HDC IP65

TE Internal #: T1500102000-000

TE Internal Description: H10B-AGS-LB

[View on TE.com >](#)



Connectors > Rectangular Connectors > Rectangular Connector Hoods & Bases



Hood & Base Connector Product Type: **Base Housing**

Hood & Base Locking Device Type: **Locking Clip**

Sealable: **Yes**

Circuit Application: **Power & Signal**

Features

Product Type Features

Product Size	4
Hood & Base Connector Product Type	Base Housing
Sealable	Yes

Body Features

Material	Die Cast Aluminum
----------	-------------------

Mechanical Attachment

Hood & Base Locking Device Type	Locking Clip
---------------------------------	--------------

Usage Conditions

Corrosion Protected	Yes
---------------------	-----

Operation/Application

Circuit Application	Power & Signal
---------------------	----------------

Product Compliance

[For compliance documentation, visit the product page on TE.com>](#)

EU RoHS Directive 2011/65/EU	Compliant
------------------------------	-----------

EU ELV Directive 2000/53/EC

Compliant

China RoHS 2 Directive MIIT Order No 32, 2016

No Restricted Materials Above Threshold

EU REACH Regulation (EC) No. 1907/2006

Current ECHA Candidate List: JUN 2020
(209)Candidate List Declared Against: JAN 2020
(205)

Does not contain REACH SVHC

Halogen Content

Not Yet Reviewed for halogen content

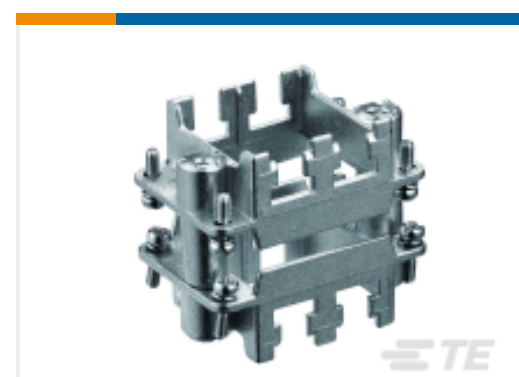
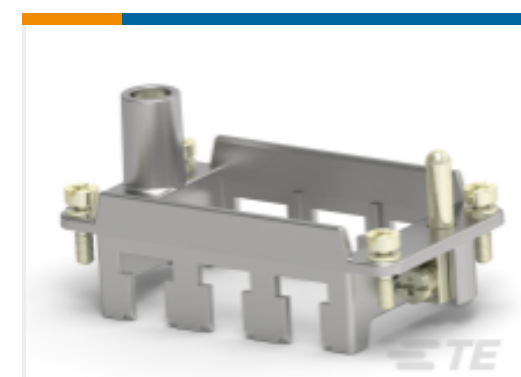
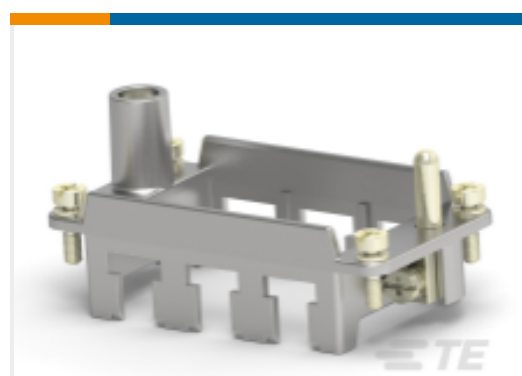
Solder Process Capability

Not reviewed for solder process capability

Product Compliance Disclaimer

This information is provided based on reasonable inquiry of our suppliers and represents our current actual knowledge based on the information they provided. This information is subject to change. The part numbers that TE has identified as EU RoHS compliant have a maximum concentration of 0.1% by weight in homogenous materials for lead, hexavalent chromium, mercury, PBB, PBDE, DBP, BBP, DEHP, DIBP, and 0.01% for cadmium, or qualify for an exemption to these limits as defined in the Annexes of Directive 2011/65/EU (RoHS2). Finished electrical and electronic equipment products will be CE marked as required by Directive 2011/65/EU. Components may not be CE marked. Additionally, the part numbers that TE has identified as EU ELV compliant have a maximum concentration of 0.1% by weight in homogenous materials for lead, hexavalent chromium, and mercury, and 0.01% for cadmium, or qualify for an exemption to these limits as defined in the Annexes of Directive 2000/53/EC (ELV). Regarding the REACH Regulation, the information TE provides on SVHC in articles for this part number is based on the latest European Chemicals Agency (ECHA) 'Guidance on requirements for substances in articles' posted at this URL: <https://echa.europa.eu/guidance-documents/guidance-on-reach>

Compatible Parts

TE Model / Part # T1310100125-000
H10B-TS-RO-M25TE Model / Part # T2040102201-000
HE-010-FTE Model / Part # T2070104201-000
H10BN-T3-FTE Model / Part # T2070104202-000
H10BN-T3-F 6.0-6.0TE Model / Part # T2070104203-000
H10BN-T3-F 2.5-6.0Also in the Series | [HDC IP65](#)



Rectangular Connector Hoods & Bases (1248)

Customers Also Bought



TE Model / Part #T2010322101-000
HA-016-M 17-32



TE Model / Part #T2040102201-000
HE-010-F



TE Model / Part #T2040102101-000
HE-010-M



TE Model / Part #T1310100116-000
H10B-TS-RO-PG16



TE Model / Part #T1500162000-000
H16B-AGS-LB



TE Model / Part #T1320100116-000
H10B-TG-RO-PG16



TE Model / Part #T2020001025-000
CDM-2.5



TE Model / Part #T2030002005-000
CEF-0.5

Documents

Product Drawings

H10B-AGS-LB

English

CAD Files

3D PDF

3D

Customer View Model

[ENG_CVM_CVM_T1500102000-000_A.2d_dxf.zip](#)

English

Customer View Model

[ENG_CVM_CVM_T1500102000-000_A.3d_igs.zip](#)

English

Customer View Model

[ENG_CVM_CVM_T1500102000-000_A.3d_stp.zip](#)

English

By downloading the CAD file I accept and agree to the [Terms and Conditions](#) of use.



Datasheets & Catalog Pages

HEAVY DUTY CONNECTORS

English

[HDC Connectors - July 2015 \(English\)](#)

English

[HDC Flyers July 2015 \(Chinese\)](#)

Product Specifications

Application Specification

English