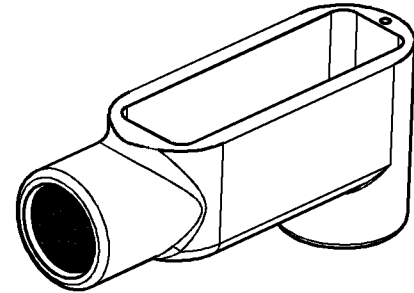
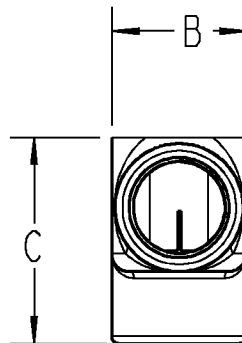
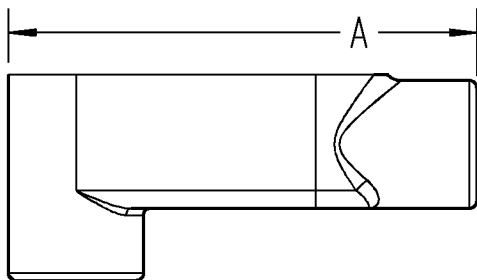
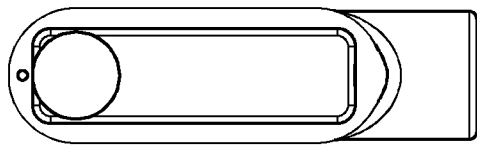




# T&B Conduit Bodies



NOTES:  
 MATERIAL: MALLEABLE IRON  
 2. FINISH: ZINC PLATED  
 3. TWO SCREW COVER STYLE SHOWN



CAT No.	SIZE	DESCRIPTION	DIM "A"	DIM "B"	DIM "C"
LB50M	1/2"	RIGID LB CONDUIT BODIES	4-11/16"	1-5/16"	2-1/16"
LB75M	3/4"	RIGID LB CONDUIT BODIES	5-3/8"	1-1/2"	2-1/4"
LB100M	1"	RIGID LB CONDUIT BODIES	6-3/16"	1-13/16"	2-5/8"
LB125M	1-1/4"	RIGID LB CONDUIT BODIES	8-1/8"	2-5/8"	2-3/4"
LB150M	1-1/2"	RIGID LB CONDUIT BODIES	8-1/8"	2-5/8"	2-13/16"
LB200M	2"	RIGID LB CONDUIT BODIES	10-1/2"	3-1/8"	4-7/16"
LB250M	2-1/2"	RIGID LB CONDUIT BODIES	13-5/8"	4-5/16"	5-3/8"
LB300M	3"	RIGID LB CONDUIT BODIES	13-7/8"	4-5/16"	5-7/8"
LB350M	3-1/2"	RIGID LB CONDUIT BODIES	16-1/4"	5-5/8"	6-7/8"
LB400M	4"	RIGID LB CONDUIT BODIES	16-5/8"	5-5/8"	7-3/16"

### GENERAL NOTES

- ALL DIMENSIONS ARE FOR REFERENCE ONLY.
- DIMENSIONS IN BRACKETS [ ] ARE IN METRIC UNITS.

### REVISIONS

- SEE ERN ( \*\*\*\* ) FOR APPROVAL SIGNATURES & RELEASE DATE.  
 PROJECT NO: \*\*\*\*

**Thomas & Betts**  
 www.tnb.com

DESCRIPTION:

## RIGID LB CONDUIT BODIES

ORIGINAL PROJECT NO / ( ERN NO )

RD55597 / ( 2006461 )

SHEET NO:

1 OF 1

REV. NO:

-

DRAWING NO:

WSD-000254